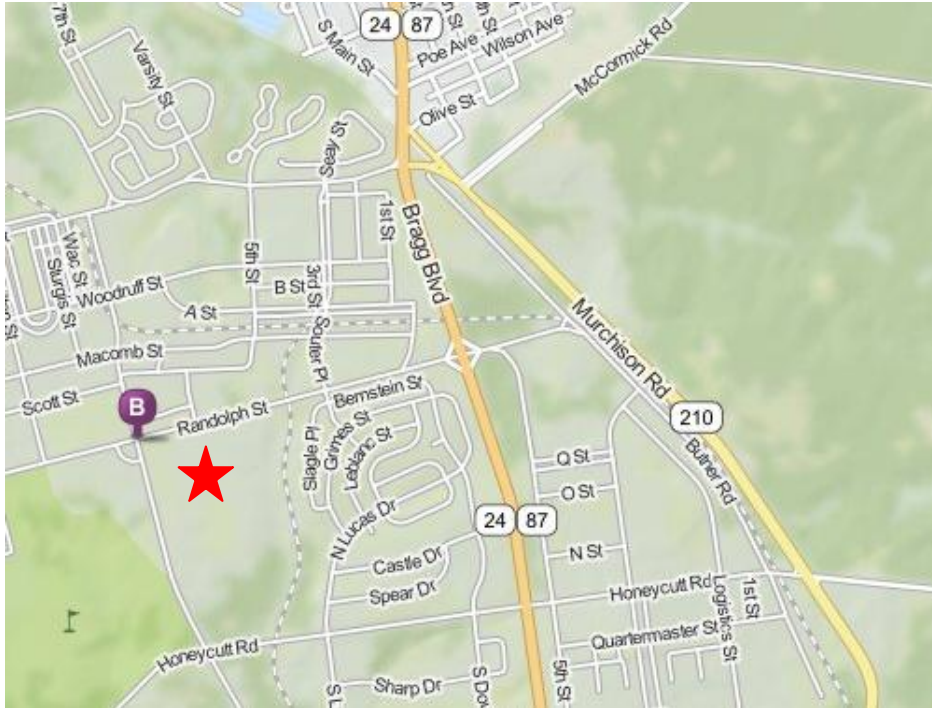
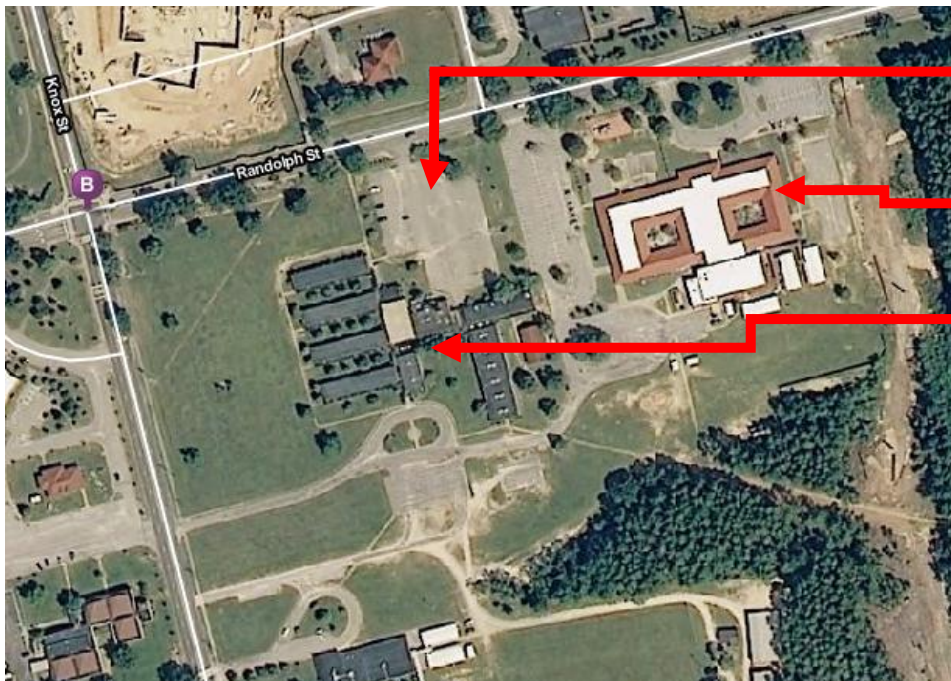


Fayetteville State University – Fort Bragg Satellite Location

The Fayetteville State University Fort Bragg building is located on the corner of Knox St and Randolph St. The nearest Fort Bragg access point is the Randolph St. gate, off of Bragg Blvd. Classroom locations will be designed as a letter (building wing location-see picture of the building below) and a number (room number). For example, E108 means the classroom is in the E wing of the building, in room 108.



**Fort Bragg
Education
Building**



Parking Lot

Elementary School

**Fort Bragg
Education
Building**

Fayetteville State University – Fort Bragg Satellite Location

NOTE

For access to Fort Bragg WITHOUT a military ID card or gate pass, you and your vehicle must be inspected each time you enter Fort Bragg. As you approach the Access Control Point (the access gate), follow all applicable signs into the “Inspection Lanes”. Be sure you have your Driver’s License, vehicle registration, and proof of insurance. The gate personnel will request that you open your vehicle doors, trunk, and (possibly) hood. All parts of your vehicle are subject to inspection. DO NOT bring any contraband (weapons, drugs, illicit/illegal materials, etc.) onto Fort Bragg.

Directions

From FSU/Murchison Road

Follow Murchison Rd toward Spring Lake. As you approach Bragg Blvd/NC24/NC87, take the LEFT branch of the road. Turn LEFT onto Bragg Blvd, and drive to the Randolph St. gate on the right. Turn RIGHT toward the gate. Follow Randolph Rd. past the elementary school. Turn LEFT into the last parking lot before the Knox St. intersection.

NOTE: If you miss the LEFT branch of the road (coming from Murchison Rd onto Bragg Blvd), you may continue driving straight to Bragg Blvd. You MUST turn RIGHT at the traffic light, however, then immediately make a U-turn at the next traffic light.

From Bragg Blvd/NC24/NC87 (coming from Fayetteville)

Follow Bragg Blvd to the Randolph St. gate on the left. Turn LEFT toward the gate. Follow Randolph Rd. past the elementary school. Turn LEFT into the last parking lot before the Knox St. intersection.

From Bragg Blvd/NC24/NC87 (coming from Spring Lake)

Follow Bragg Blvd to the Randolph St. gate on the right. Turn RIGHT toward the gate. Follow Randolph Rd. past the elementary school. Turn LEFT into the last parking lot before the Knox St. intersection.

From All American Freeway

Follow All American Fwy to the Access Gate. Take the Gruber Rd. ramp. Turn RIGHT onto Gruber Rd. Take the 1st LEFT onto Knox St. Turn RIGHT onto Randolph St., and turn into the first parking lot on the right.

From Reilly Road/Reilly Gate

Follow Reilly Road to the Access Gate. After going through the gate, continue following Reilly Rd. until you get to Honeycutt Rd. Turn RIGHT onto Honeycutt Rd. Turn LEFT onto Knox St. Turn RIGHT onto Randolph St., and turn into the first parking lot on the right.

From Yadkin Road/Yadkin Gate

Follow Yadkin Road to the Access Gate. After going through the gate, turn RIGHT onto Reilly Rd. Continue following Reilly Rd. until you get to Honeycutt Rd. Turn RIGHT onto Honeycutt Rd. Turn LEFT onto Knox St. Turn RIGHT onto Randolph St., and turn into the first parking lot on the right.