

PHASE I

FACULTY EVALUATION SYSTEM

University Taskforce on Comprehensive Evaluation

<http://www.uncfsu.edu/evaltaskforce/>

University Taskforce on Comprehensive Faculty Evaluation

- Soni Martin, Chair
- Thomas E. Van Cantfort, Vice Chair
- Sherrice Allen
- Michael DeValve
- Claude Hargrove
- Joseph Johnson
- Petur Jonsson
- Peter Valenti

Figure 1
Percent of Activity Categories
All Roles: University Wide

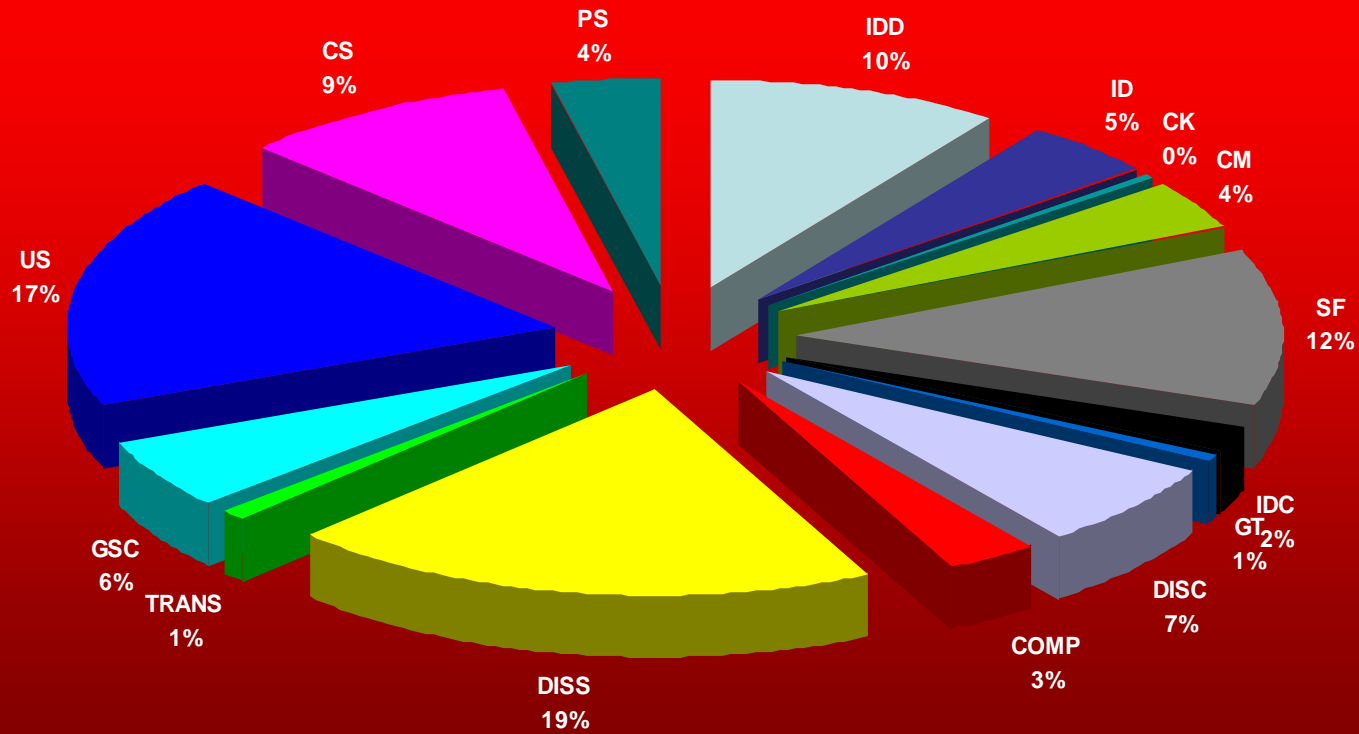


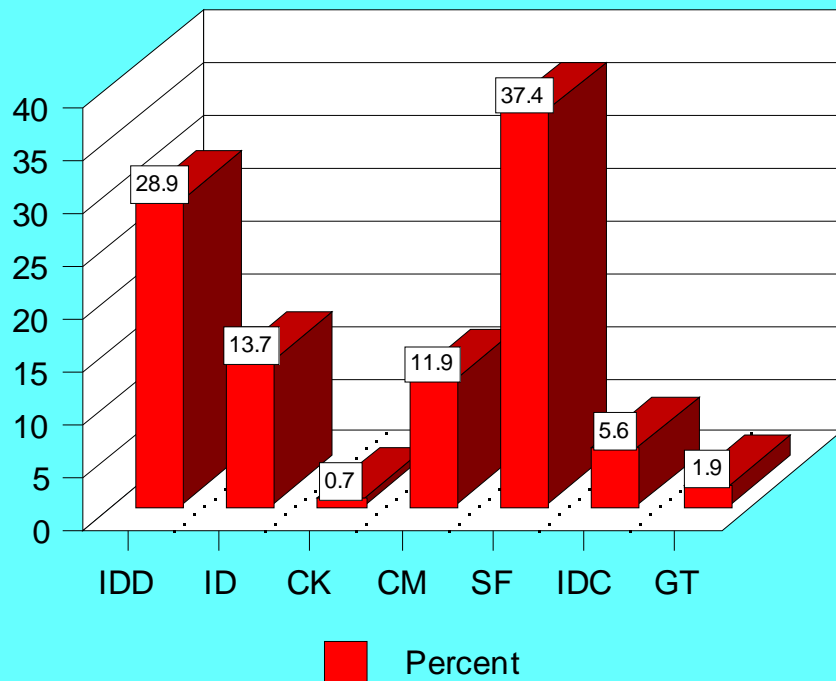
Table I

Frequency & Percent of Activity Categories

All Roles: University Wide

	Frequency	Percent
Instructional Design/Development	78	9.6
Instructional Delivery	37	4.5
Content Knowledge	2	0.2
Course Management	32	3.9
Non-Classroom, Student Focus	101	12.4
Instructor Development/Collaboration	15	1.8
Grantspersonship: Teaching	5	0.6
Discovery	55	6.8
Competence	24	2.9
Dissemination	160	19.7
Translation	7	0.9
Grantpersonship: Scholarly & Creative	45	5.5
University Service	147	18.1
Community Service	75	9.2
Professional Service	30	3.7
TOTAL	814	100

Figure 2
Percent of Activity Categories
Teaching Role: University Wide

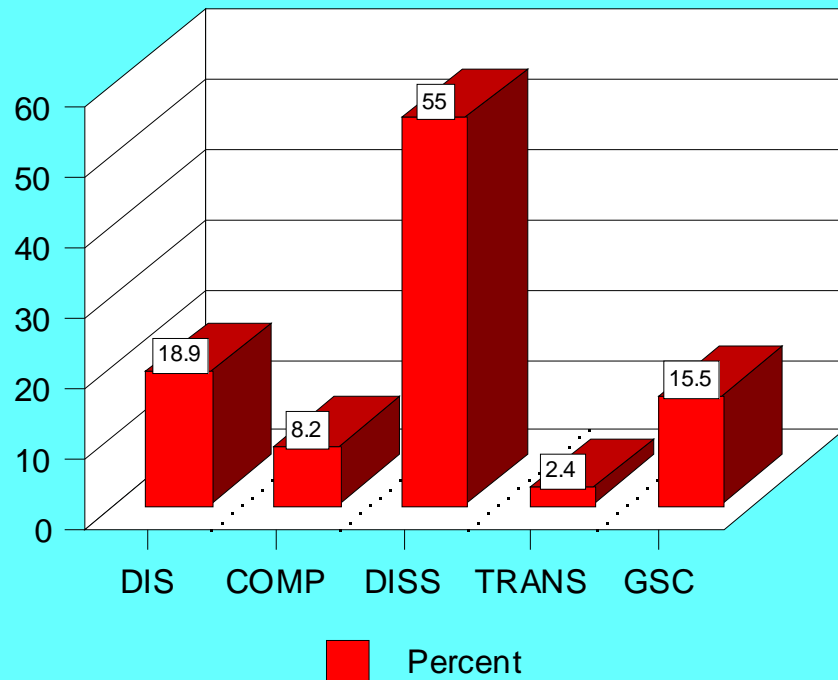


- **Most frequently cited:**
 - **Non-classroom, student focus**
 - **Instructional design and development**
- **Least frequently cited:**
 - **Content Knowledge**
 - **Grantspersonship**

Figure 3

Percent of Activity Categories

Scholarly & Creative Role: University Wide



- Most frequently cited:
 - Dissemination
- Least frequently cited:
 - Translation

Figure 4
Percent of Activity Categories
Service Role: University Wide

- Most frequently cited:
 - University Service
- Least frequently cited:
 - Professional Service

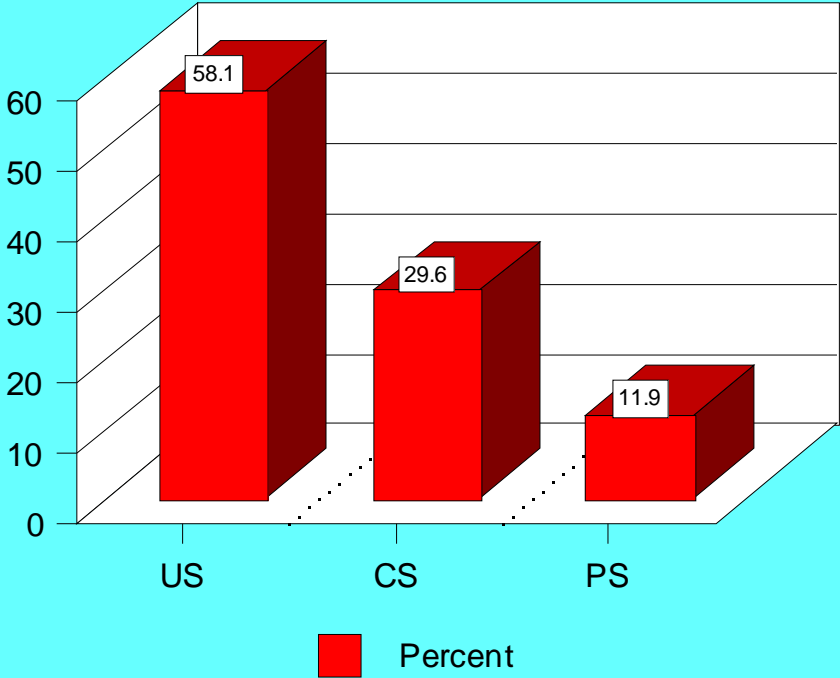


Figure 5
Percent of Activity Categories
All Roles College of Basic & Applied Sciences

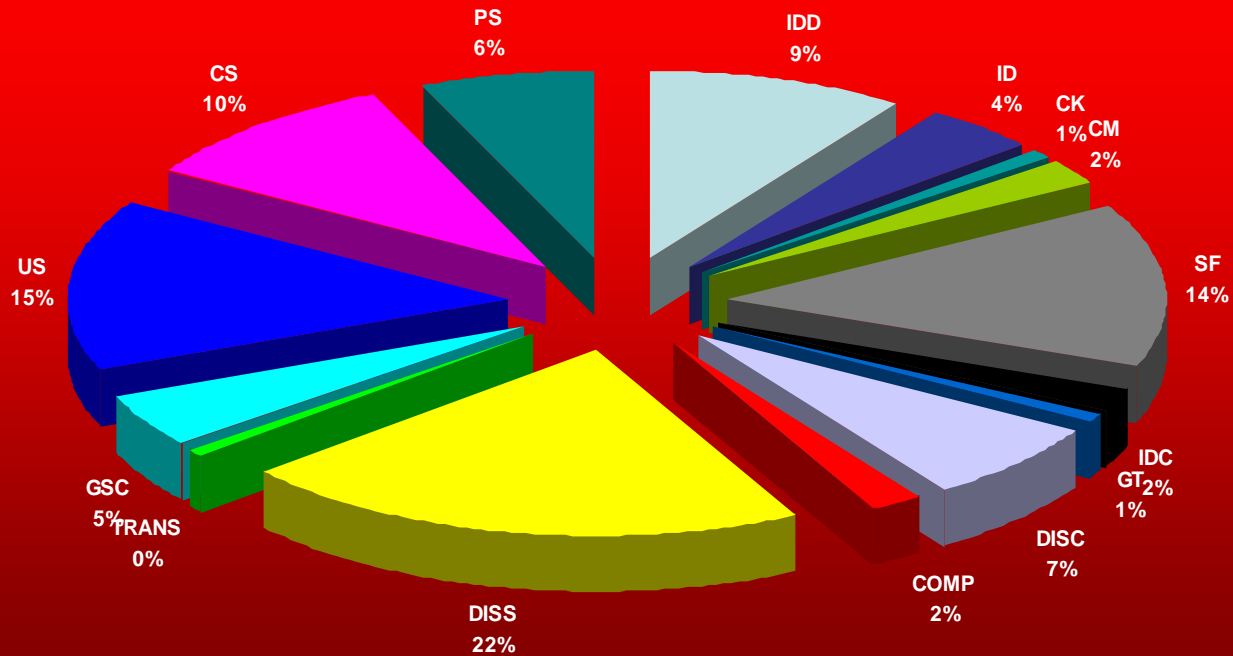


Table II
Frequency & Percent of Activity Categories
All Roles: College of Basic & Applied Sciences

	Frequency	Percent
Instructional Design/Development	24	9.4
Instructional Delivery	11	4.3
Content Knowledge	2	0.8
Course Management	6	2.3
Non-Classroom, Student Focus	36	14.1
Instructor Development/Collaboration	5	2.0
Grantspersonship: Teaching	2	0.8
Discovery	18	7.0
Competence	5	2.0
Dissemination	54	21.1
Translation	1	0.4
Grantpersonship: Scholarly & Creative	12	4.7
University Service	38	14.8
Community Service	26	10.2
Professional Service	16	6.3
TOTAL	256	100

Figure 6
Percent of Activity Categories
All Roles: College of Humanities & Social Sciences



Table III
Frequency and Percent of Activity Categories
All Role: College of Humanities & Social Sciences

	Frequency	Percent
Instructional Design/Development	40	9.2
Instructional Delivery	18	4.1
Course Management	13	3.0
Non-Classroom, Student Focus	50	11.5
Instructor Development/Collaboration	6	1.4
Grantpersonship: Teaching	3	0.7
Discovery	34	7.8
Competence	12	2.8
Dissemination	84	19.3
Translation	5	1.1
Grantpersonship: Scholarly & Creative	27	6.2
University Service	90	20.7
Community Service	39	9.0
Professional Service	13	3.0
TOTAL	435	100

Figure 7
Percent of Activity Categories
All Roles: School of Business

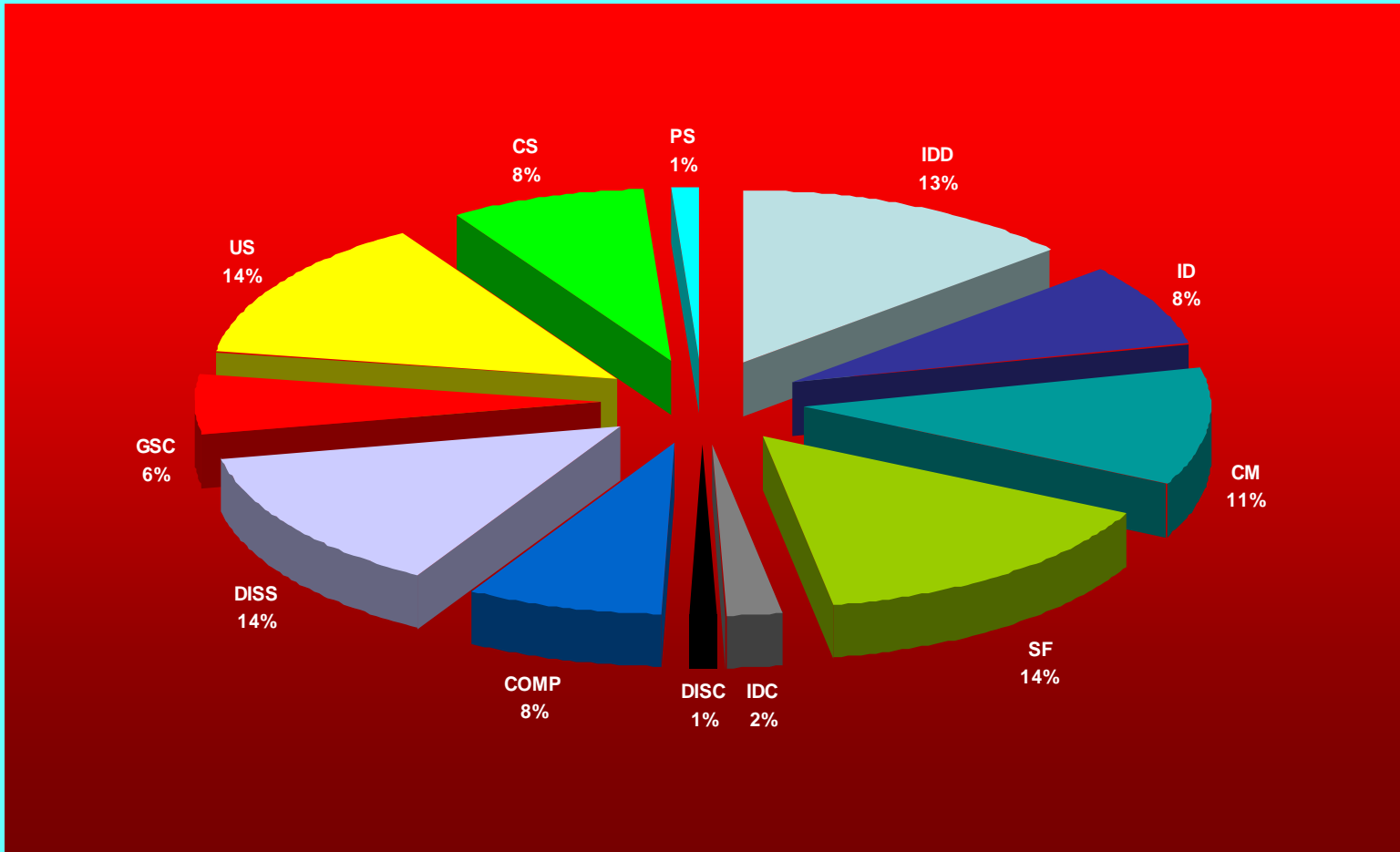


Table IV
Frequency and Percent of Activity Categories
All Roles: School of Business

	Frequency	Percent
Instructional Design/Development	12	13.5
Instructional Delivery	7	7.9
Course Management	10	11.2
Non-Classroom, Student Focus	13	14.6
Instructor Development/Collaboration	2	2.2
Discovery	1	1.1
Competence	7	7.9
Dissemination	12	13.5
Grantpersonship: Scholarly & Creative	5	5.6
University Service	12	13.3
Community Service	7	7.9
Professional Service	1	1.1
TOTAL	89	100

Figure 8
Percent of Activity Categories
All Roles: School of Education

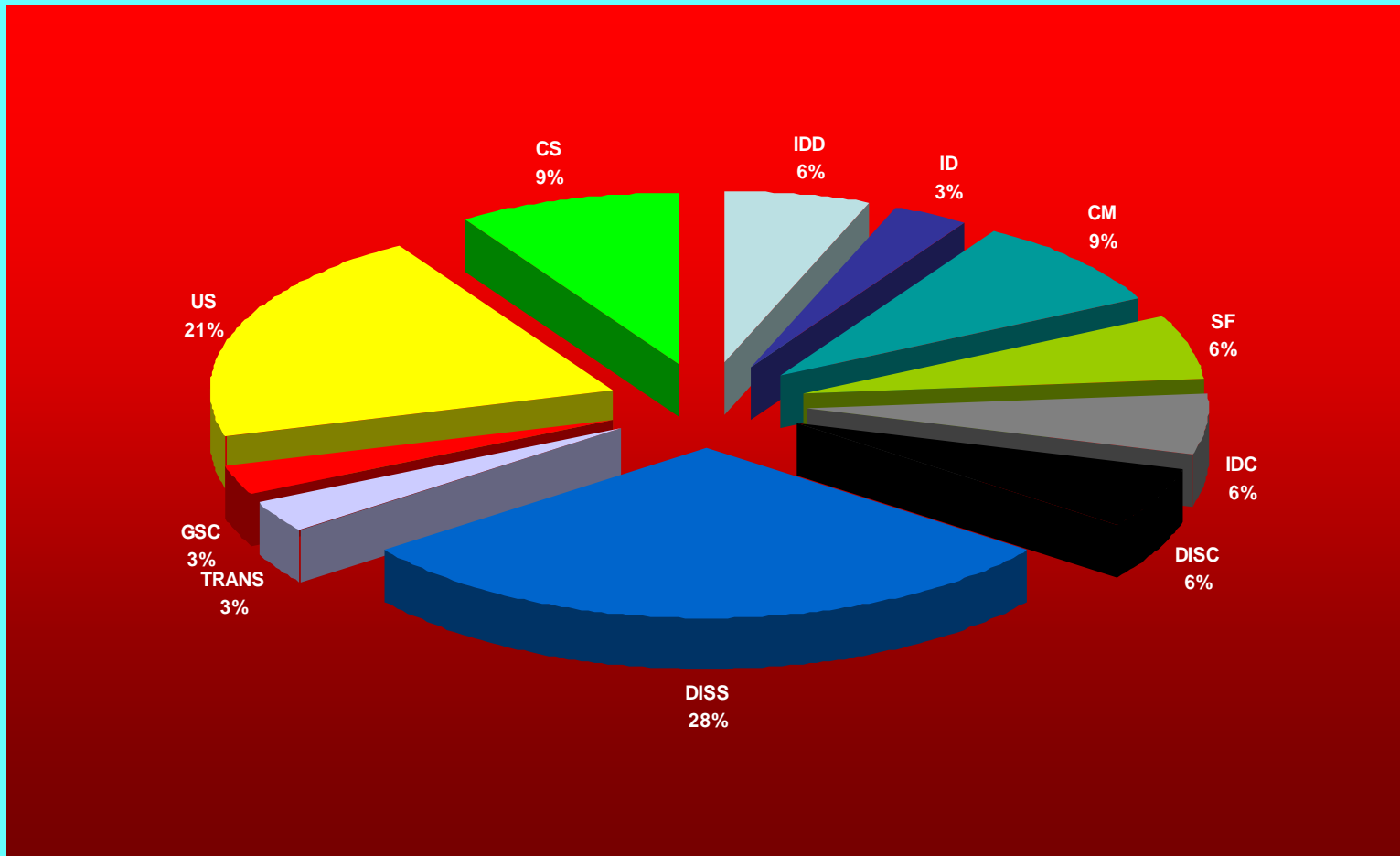


Table V
Frequency and Percent of Activity Categories
All Roles: School of Education

	Frequency	Percent
Instructional Design/Development	2	5.9
Instructional Delivery	1	2.9
Course Management	3	8.8
Non-Classroom, Student Focus	2	5.9
Instructor Development/Collaboration	2	5.9
Discovery	2	5.9
Dissemination	10	29.4
Translation	1	2.9
Grantpersonship: Scholarly & Creative	1	2.9
University Service	7	20.6
Community Service	3	8.8
TOTAL	34	100