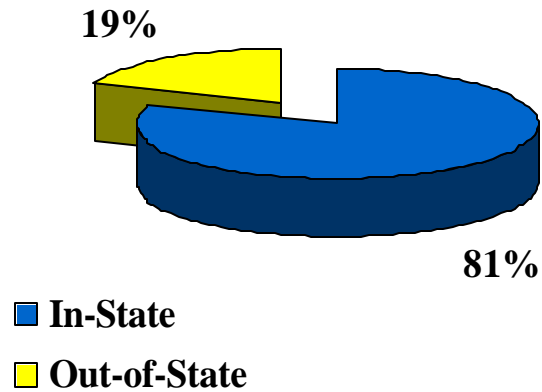


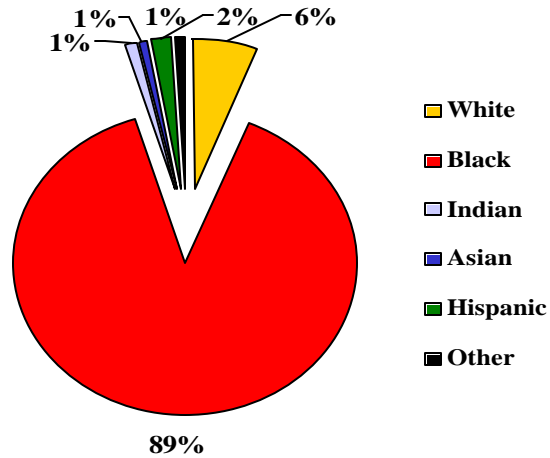
Freshmen Applicants Status
Fall 2003

Status	Tally	Percentage
Accepted	1629	85%
Rejected	285	15%
Total	1914	100%



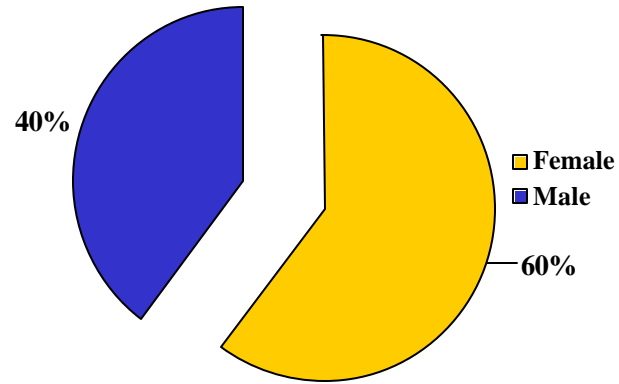
Freshmen Applicants By Residency Fall 2003

Residency	Tally	Percentage
In-State	1545	81%
Out-of-State	369	19%
Total	1914	100%



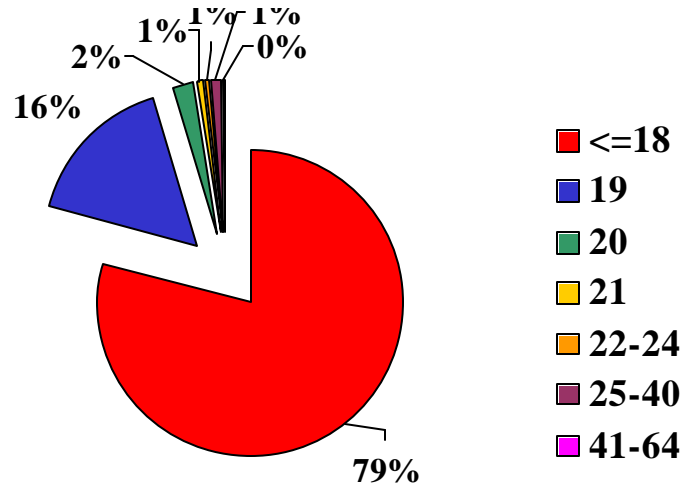
Freshmen Applicants By Race Fall 2003

Race	Tally	Percentage
White	117	6%
Black	1708	89%
American Indian	21	1%
Asian	13	1%
Hispanic	41	2%
Other	14	1%
Total	1914	100%



Freshmen Applicants By Gender Fall 2003

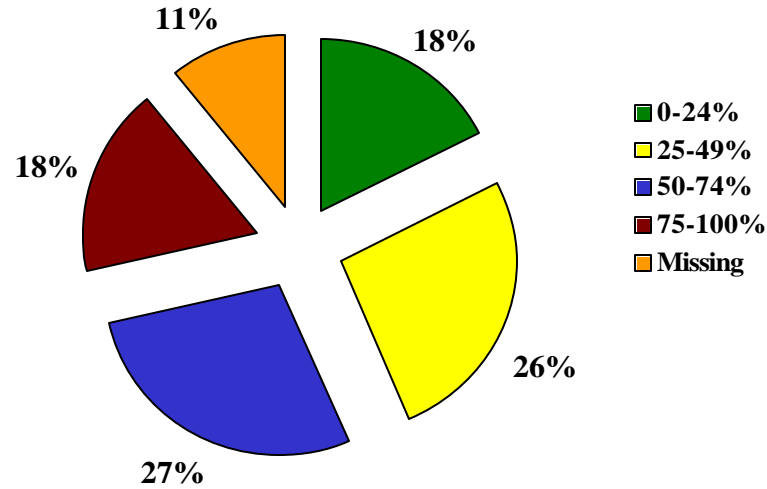
Gender	Tally	Percentage
Male	760	40%
Female	1154	60%
Total	1914	100%



Freshmen Applicants By Age

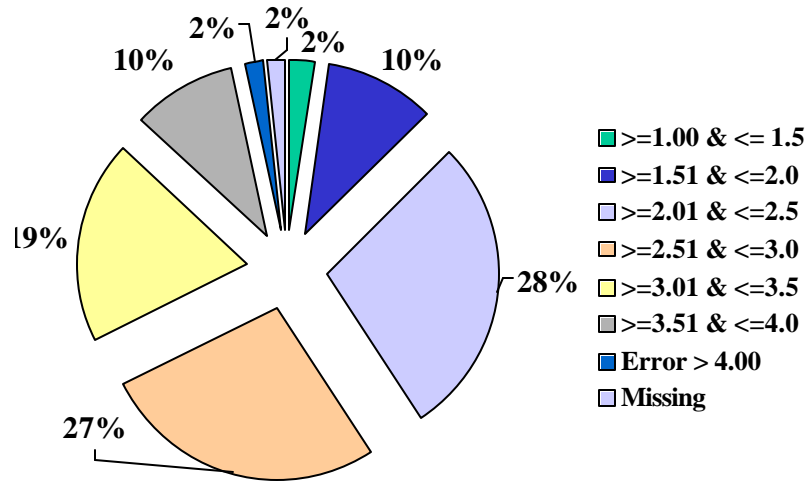
Fall 2003

Age	Tally	Percentage
<= 18	1517	79%
19	306	16%
20	41	2%
21	11	1%
22-24	15	1%
25-40	18	1%
41-64	6	1%
Total	1914	100%



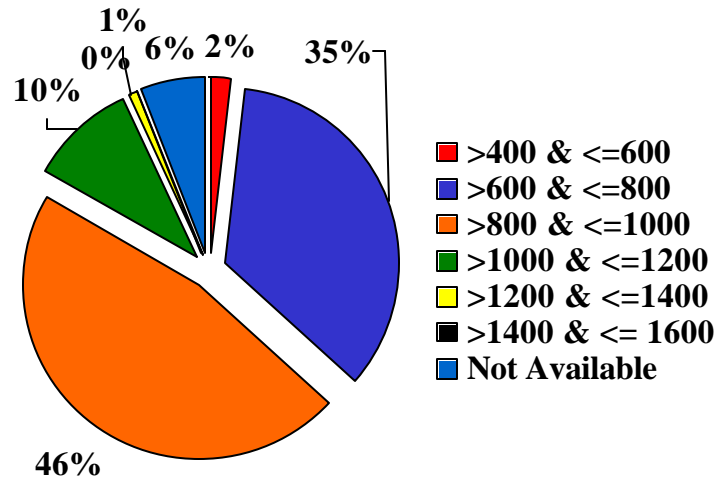
Class Rank of Freshmen Applicants in Quartiles
Fall 2003

Rank	Tally	Percentage
0-24%	337	18%
25-49%	500	26%
50-74%	528	27%
75-100%	343	18%
Missing/Other	206	11%
Total	1914	100%



Freshmen Applicants High School GPA Fall 2003

High School GPA	Tally	Percentage
Missing	32	2%
≥ 1.00 & ≤ 1.5	44	2%
≥ 1.51 & ≤ 2.0	197	10%
≥ 2.01 & ≤ 2.5	543	28%
≥ 2.51 & ≤ 3.0	515	27%
≥ 3.01 & ≤ 3.5	367	19%
≥ 3.51 & ≤ 4.0	186	10%
Error > 4.00	30	2%
Total	1914	100%



Freshmen Applicants Combined SAT Score Fall 2003

SAT Score	Tally	Percentage
>400 & <= 600	39	2%
>600 & <= 800	661	34%
>800 & <= 1000	896	47%
>1000 & <= 1200	187	10%
>1200 & <= 1400	12	1%
>1400 & <= 1600	1	0%
Not Available	118	6%
Total	123	100%
