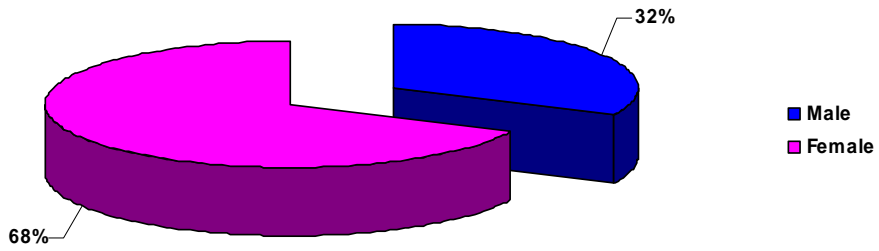
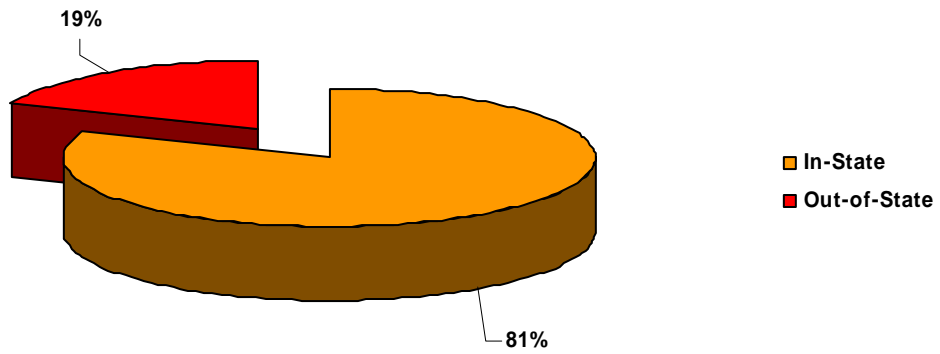


First Time Freshmen Applicants By Gender



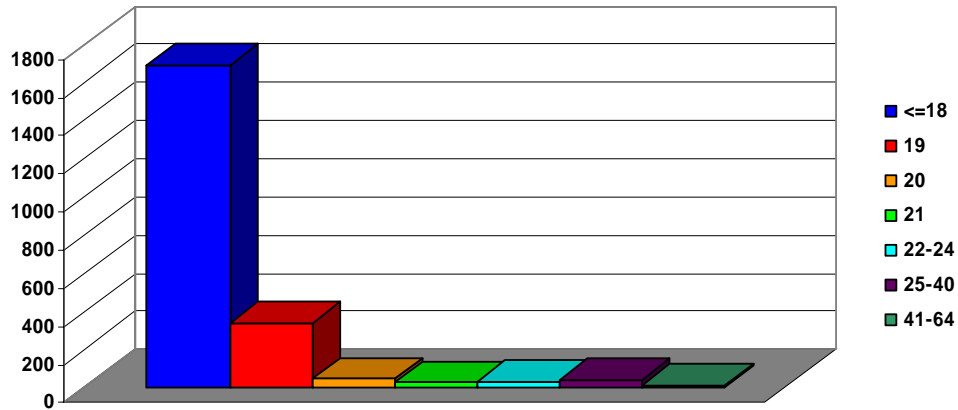
Gender	Tally	Percentage
Male	695	32.25%
Female	1460	67.75%
Total	2155	100.00%

By Residency



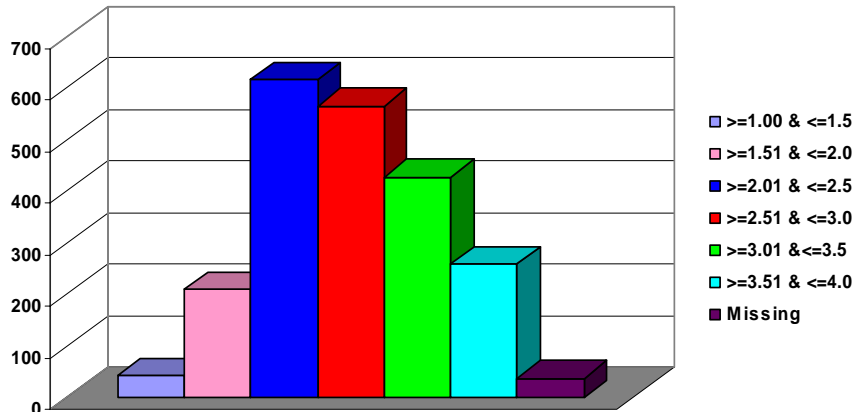
Residency	Tally	Percentage
In-State	1746	81.02%
Out-of-State	409	18.98%
Total	2155	100.00%

First Time Freshmen Applicants By Age



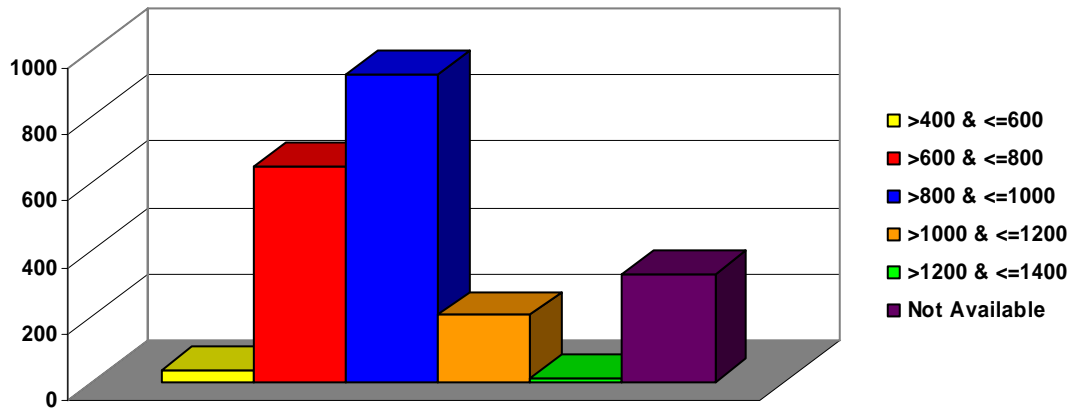
Age	Tally	Percentage
<=18	1684	78.14%
19	336	15.59%
20	42	1.95%
21	22	1.02%
22-24	27	1.25%
25-40	37	1.72%
41-64	7	0.32%
Total	2155	100.00%

By High School GPA



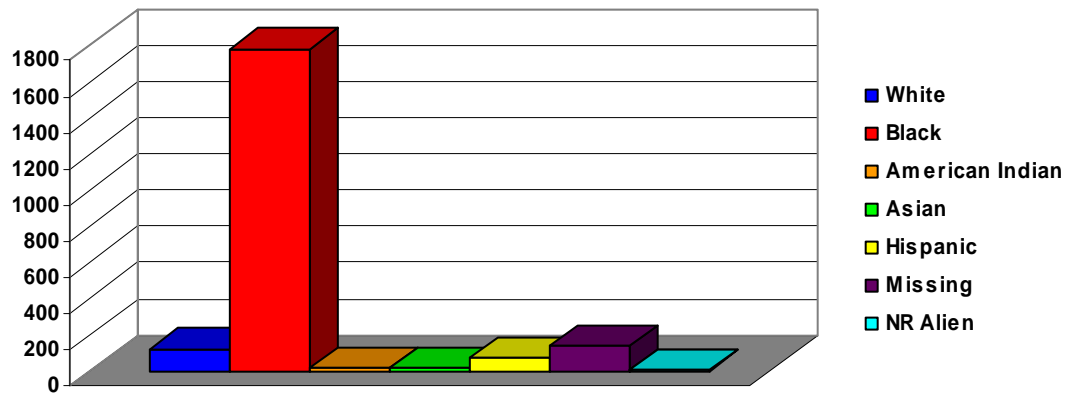
HS GPA	Tally	Percentage
>=1.00 & <=1.5	42	1.95%
>=1.51 & <=2.0	208	9.65%
>=2.01 & <=2.5	617	28.63%
>=2.51 & <=3.0	565	26.22%
>=3.01 & <=3.5	427	19.81%
>=3.51 & <=4.0	259	12.02%
Missing	37	1.72%
Total	2155	100.00%

First Time Freshmen Applicants By Combined SAT Score



Combined SAT	Tally	Percentage
>400 & <=600	37	1.72%
>600 & <=800	649	30.12%
>800 & <=1000	925	42.92%
>1000 & <=1200	202	9.37%
>1200 & <=1400	15	0.70%
Not Available	327	15.17%
Total	2155	100.00%

By Race



Race	Tally	Percentage
White	121	5.61%
Black	1779	82.55%
American Indian	18	0.84%
Asian	19	0.88%
Hispanic	71	3.29%
Missing	142	6.59%
NR Alien	5	0.23%
Total	2155	100.00%