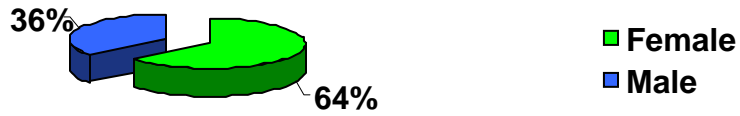


## First-time Freshmen Enrolled Fall 2005 By Gender

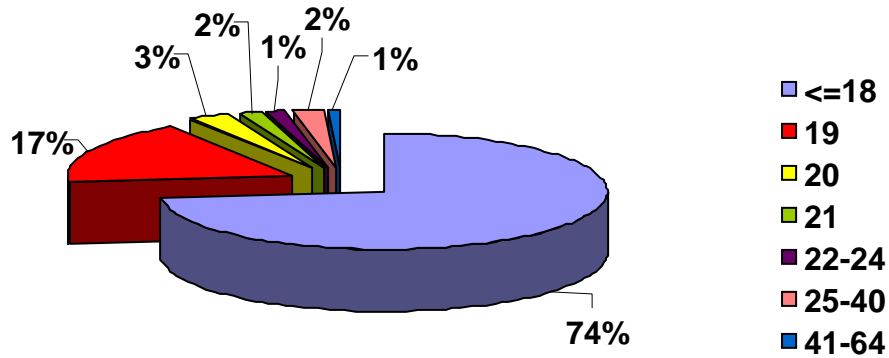
---



Gender	Tally	Percentage
Female	546	64.39%
Male	302	35.61%
Total	848	100.00%

## By Age

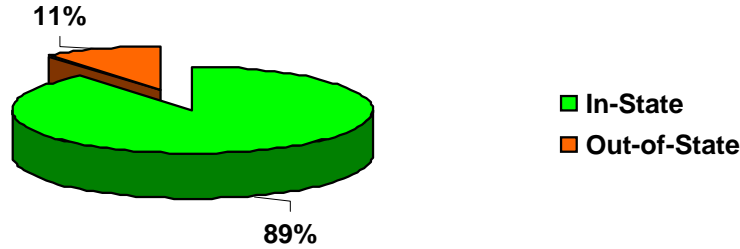
### First-time Freshmen Enrolled Fall 2005 By Age



Age	Tally	Percentage
<=18	623	73.47%
19	148	17.45%
20	26	3.07%
21	14	1.65%
22-24	11	1.30%
25-40	20	2.36%
41-64	6	0.71%
Total	848	100.00%

## First-time Freshmen Enrolled Fall 2005 By Residency

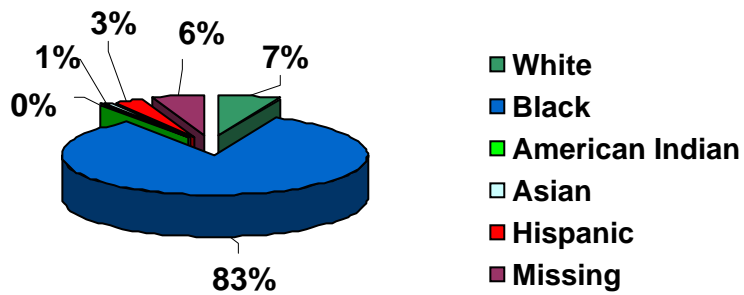
---



Residency	Tally	Percentage
In-State	756	89.15%
Out-of-State	92	10.85%
<b>Total</b>	<b>848</b>	<b>100.00%</b>

---

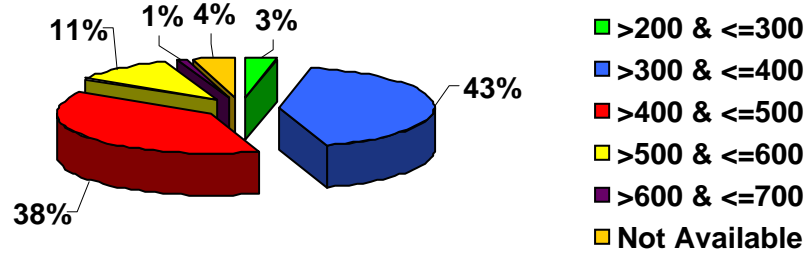
## By Race



Race	Tally	Percentage
White	56	6.60%
Black	709	83.61%
American Indian	3	0.35%
Asian	7	0.83%
Hispanic	25	2.95%
Missing	48	5.66%
<b>Total</b>	<b>848</b>	<b>100.00%</b>

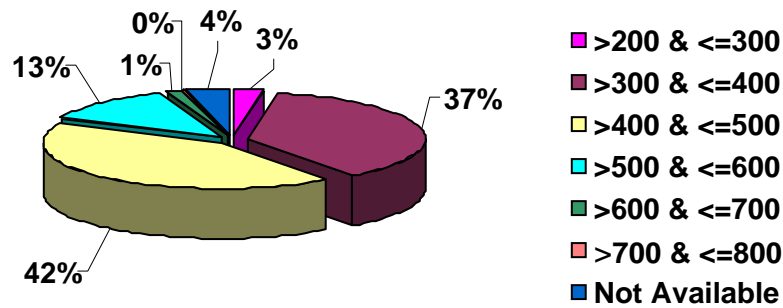
## First-time Freshmen Enrolled Fall 2005 By SAT Verbal

---



SAT Verbal	Tally	Percentage
>200 & <=300	29	3.42%
>300 & <=400	353	41.63%
>400 & <=500	326	38.44%
>500 & <=600	92	10.85%
>600 & <=700	10	1.18%
Not Available	38	4.48%
<b>Total</b>	<b>848</b>	<b>100.00%</b>

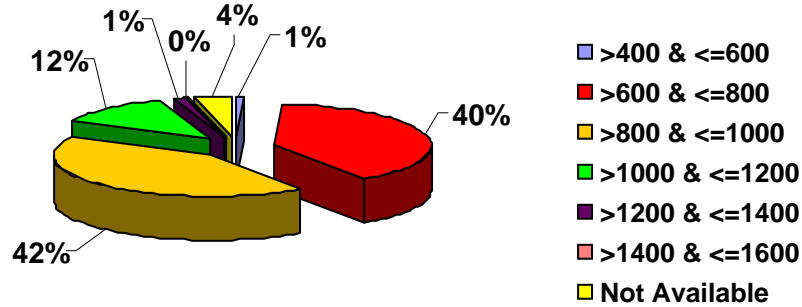
## By SAT Math



SAT Math	Tally	Percentage
>200 & <=300	23	2.71%
>300 & <=400	316	37.26%
>400 & <=500	356	41.98%
>500 & <=600	107	12.62%
>600 & <=700	11	1.30%
>700 & <=800	2	0.24%
Not Available	33	3.89%
<b>Total</b>	<b>848</b>	<b>100.00%</b>

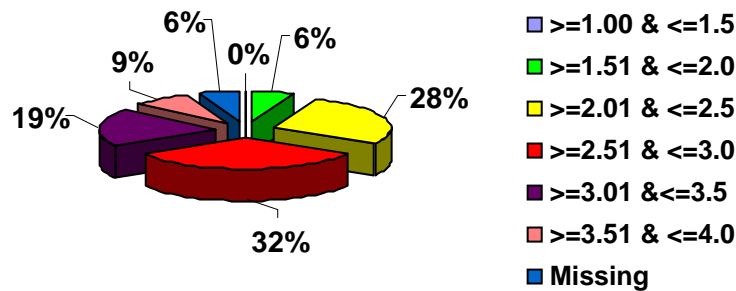
## First-time Freshmen Enrolled Fall 2005 By SAT Combined

---



SAT Combined	Tally	Percentage
>400 & <=600	6	0.71%
>600 & <=800	336	39.62%
>800 & <=1000	360	42.45%
>1000 & <=1200	101	11.91%
>1200 & <=1400	9	1.06%
>1400 & <=1600	3	0.35%
Not Available	33	3.89%
<b>Total</b>	<b>848</b>	<b>100.00%</b>

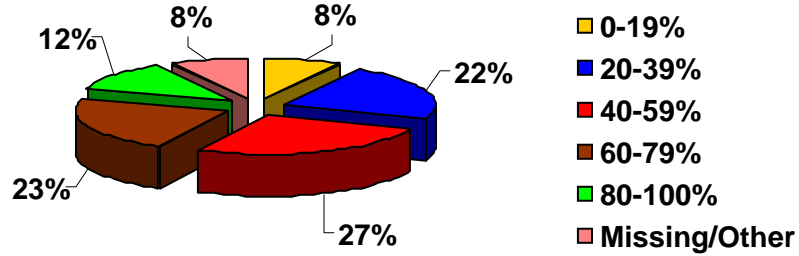
## By High School GPA



High School GPA	Tally	Percentage
>=1.00 & <=1.5	1	0.12%
>=1.51 & <=2.0	48	5.66%
>=2.01 & <=2.5	234	27.59%
>=2.51 & <=3.0	280	33.02%
>=3.01 & <=3.5	164	19.34%
>=3.51 & <=4.0	74	8.73%
Missing	47	5.54%
<b>Total</b>	<b>848</b>	<b>100.00%</b>

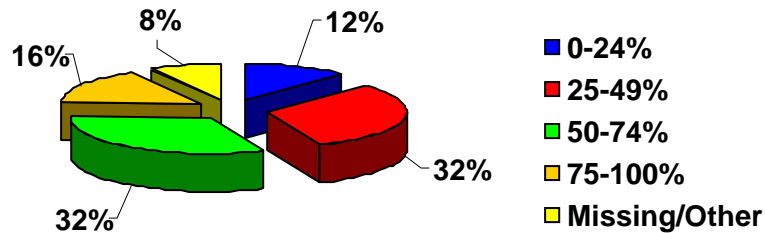
## First-time Freshmen Enrolled Fall 2005 By High School Class Rank in Quintiles

---



Quintile Rank	Tally	Percentage
0-19%	71	8.37%
20-39%	189	22.29%
40-59%	227	26.77%
60-79%	191	22.52%
80-100%	99	11.67%
Missing/Other	71	8.37%
<b>Total</b>	<b>848</b>	<b>100.00%</b>

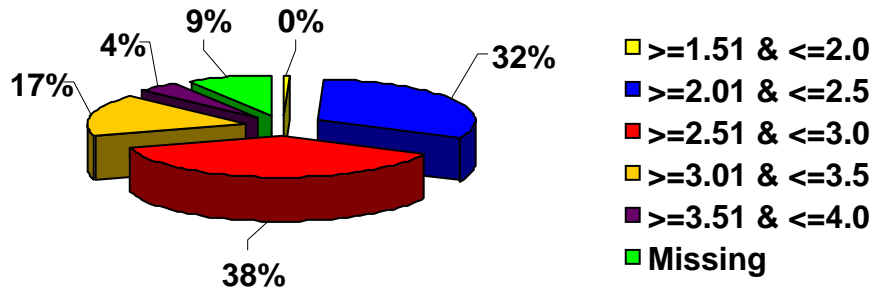
## By High School Class Rank in Quartiles



Quartile Rank	Tally	Percentage
0-24%	104	12.26%
25-49%	269	31.72%
50-74%	269	31.72%
75-100%	135	15.92%
Missing/Other	71	8.37%
<b>Total</b>	<b>848</b>	<b>100.00%</b>

## First-time Freshmen Enrolled Fall 2005 By Predicted GPA

---



Predicted GPA	Tally	Percentage
$\geq 1.51$ & $\leq 2.0$	4	0.47%
$\geq 2.01$ & $\leq 2.5$	268	31.6%
$\geq 2.51$ & $\leq 3.0$	325	38.33%
$\geq 3.01$ & $\leq 3.5$	140	16.51%
$\geq 3.51$ & $\leq 4.0$	38	4.48%
Missing	73	8.61%
<b>Total</b>	<b>848</b>	<b>100.00%</b>