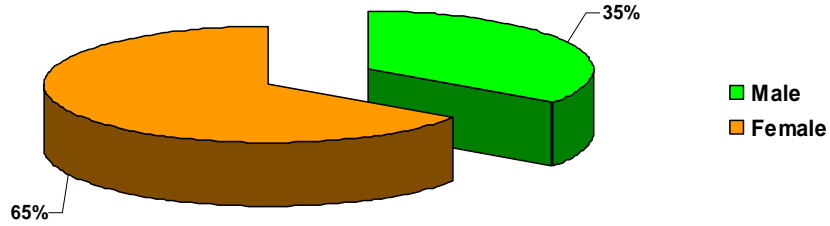
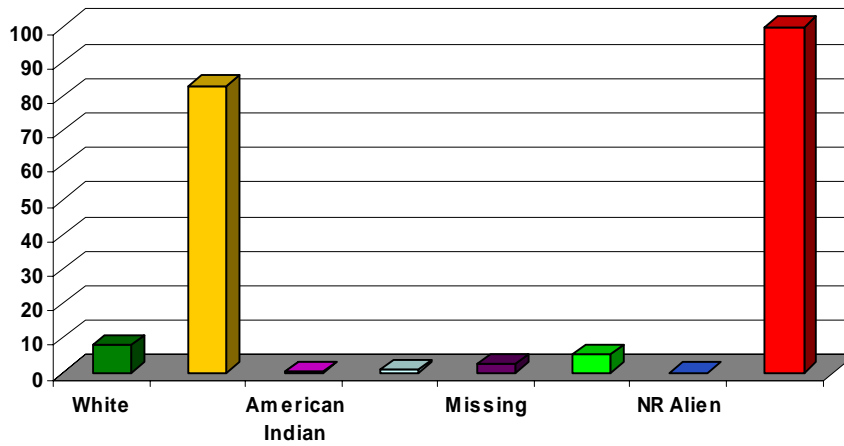


### First Time Freshmen Applicants By Gender



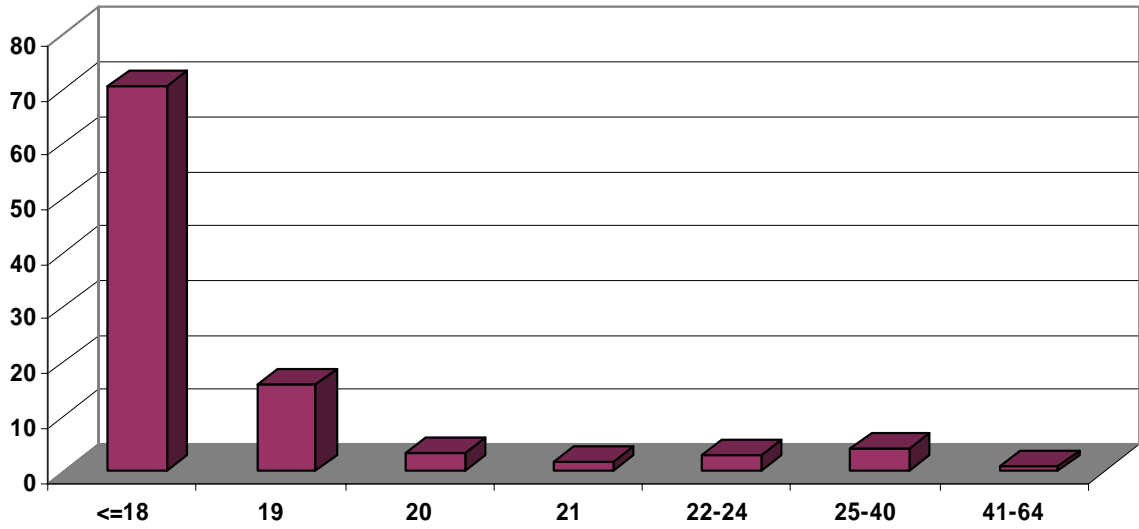
Gender	Tally	Percentage
Male	802	34.6
Female	1516	65.4
<b>Total</b>	<b>2318</b>	<b>100.0</b>

### First Time Freshmen Applicants By Race



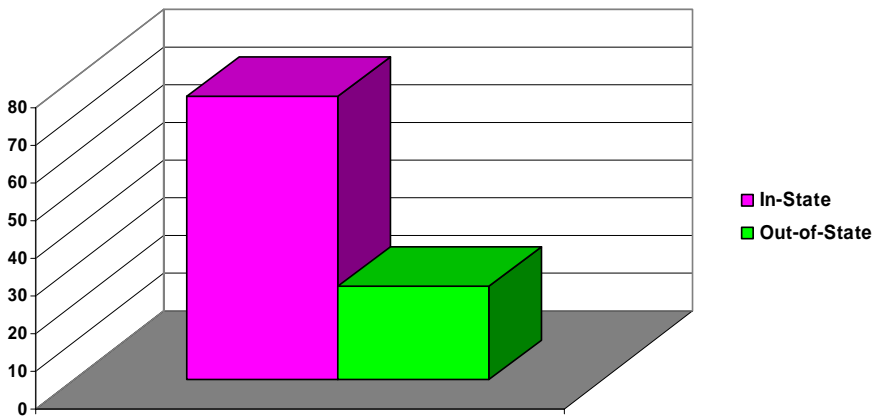
Race	Tally	Percentage
White	184	7.9
Black	1924	83.0
American Indian	9	0.39
Asian	20	0.86
Missing	122	2.5
Hispanic	58	5.3
NR Alien	1	0.0
<b>Total</b>	<b>2318</b>	<b>100.0</b>

### First Time Freshmen Applicants By Age



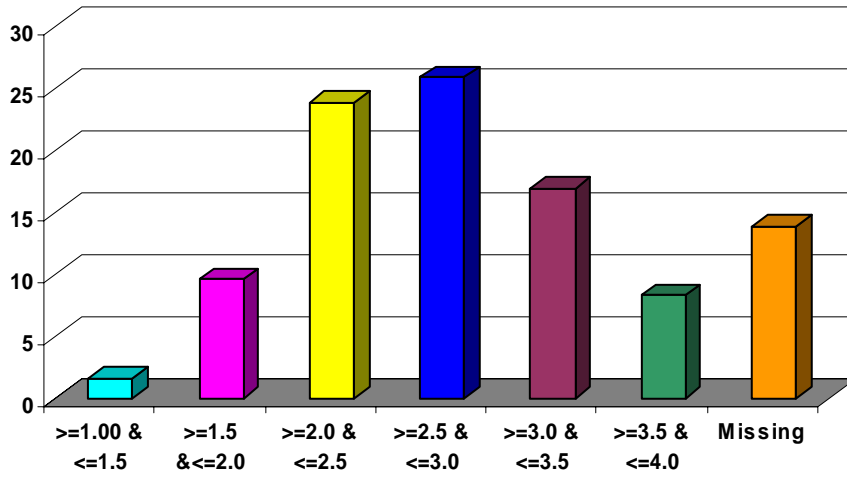
Age	Percentage
<=18	70.6
19	15.8
20	3.4
21	1.8
22-24	3.10
25-40	4.1
41-64	1.1
<b>Total</b>	<b>100.0</b>

### First Time Freshmen Applicants By Residency



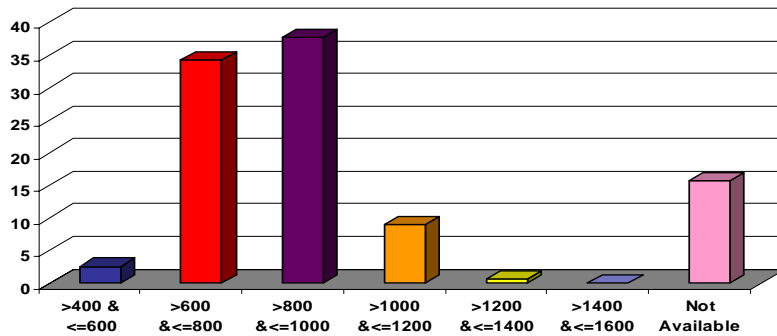
Residency	Percentage
<b>In-State</b>	<b>75.4</b>
<b>Out-of-State</b>	<b>24.6</b>
<b>Total</b>	<b>100.0</b>

### First Time Freshmen Applicants By HS GPA



HS GPA	Percentage
>=1.00 & <=1.5	1.6
>=1.5 & <=2.0	9.6
>=2.0 & <=2.5	23.9
>=2.5 & <=3.0	25.9
>=3.0 & <=3.5	16.9
>=3.5 & <=4.0	8.3
Missing	13.9
<b>Total</b>	<b>100.0</b>

### First Time Freshmen Applicants By Combined SAT Score



Combined SAT	Percentage
>400 & <=600	2.6
>600 & <=800	34.2
>800 & <=1000	37.7
>1000 & <=1200	9
>1200 & <=1400	0.7
>1400 & <=1600	0.1
Not Available	15.7