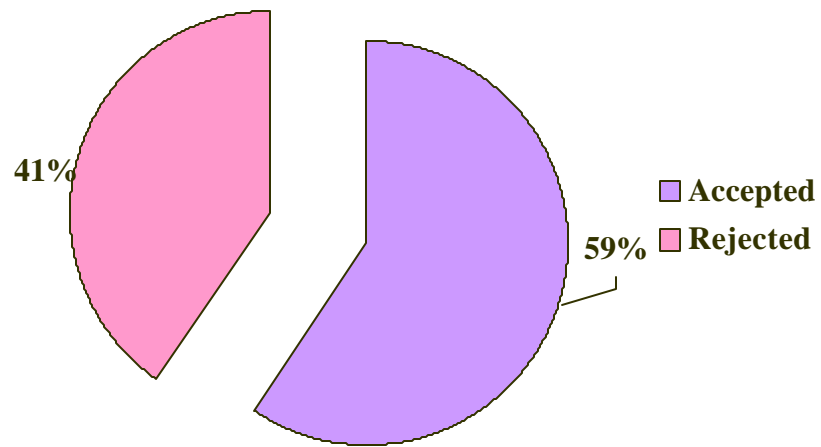


## Fall 2001 First-time Graduate Applicants

---

### Applicants Status Fall 2001



---

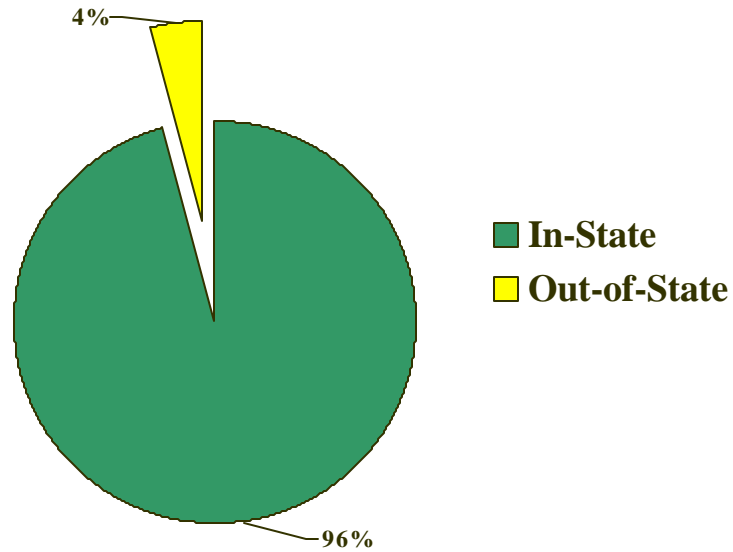
Status	Tally	Percentage
Accepted	72	59%
Rejected	49	41%
Total	121	100%

---

## Fall 2001 First-time Graduate Applicants

---

### Residency Status Fall 2001



---

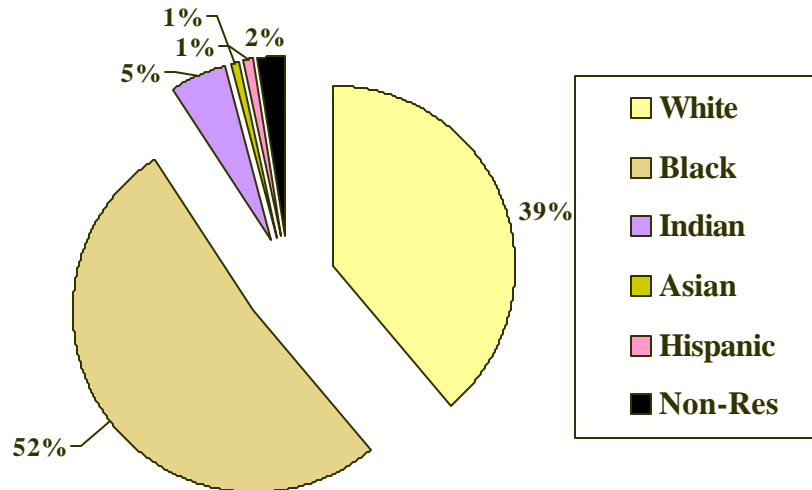
Status	Tally	Percentage
In-State	116	96%
Out-of-State	5	4%
Total	121	100%

---

## Fall 2001 First-time Graduate Applicants

---

**Ethnicity Status**  
Fall 2001



---

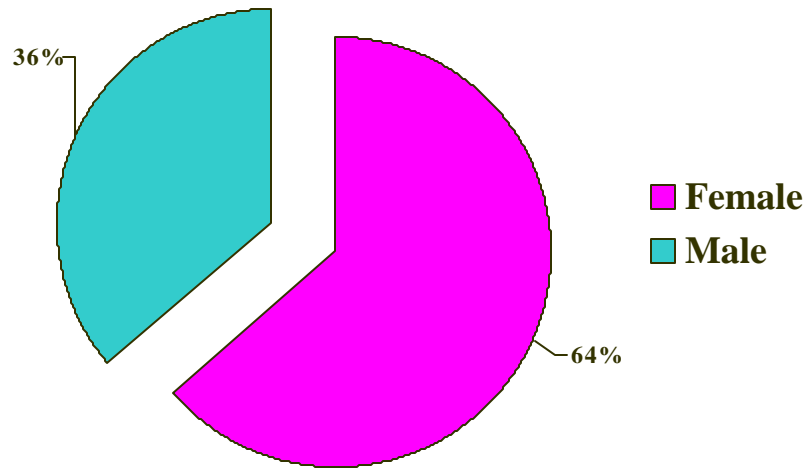
Race	Tally	Percentage
White	47	39%
Black	63	52%
Indian	6	5%
Asian	1	1%
Hispanic	1	1%
Non-Res Alien	3	2%
Total	121	100%

---

## Fall 2001 First-time Graduate Applicants

---

### Gender Status Fall 2001



---

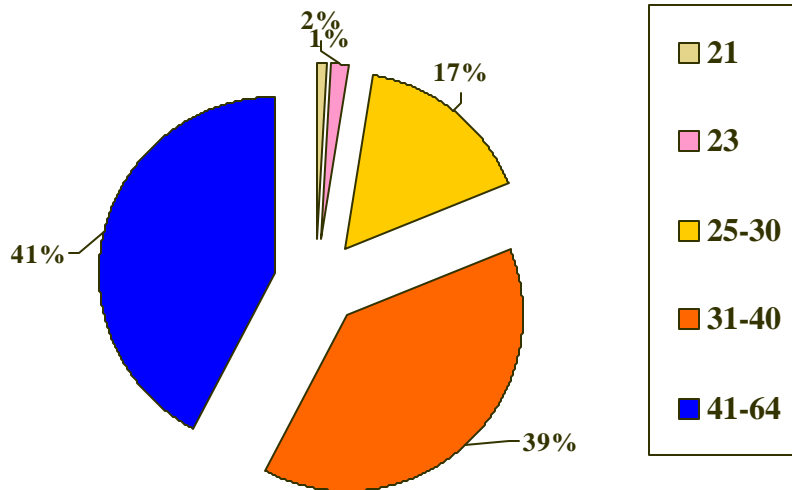
Gender	Tally	Percentage
Female	77	64%
Male	44	36%
Total	121	100%

---

## Fall 2001 First-time Graduate Applicants

---

**Age Status**  
Fall 2001



---

Age	Tally	Percentage
21	1	<1%
23	2	2%
25-30	20	16%
31-40	47	39%
41-64	51	42%
<b>Total</b>	<b>121</b>	<b>100%</b>

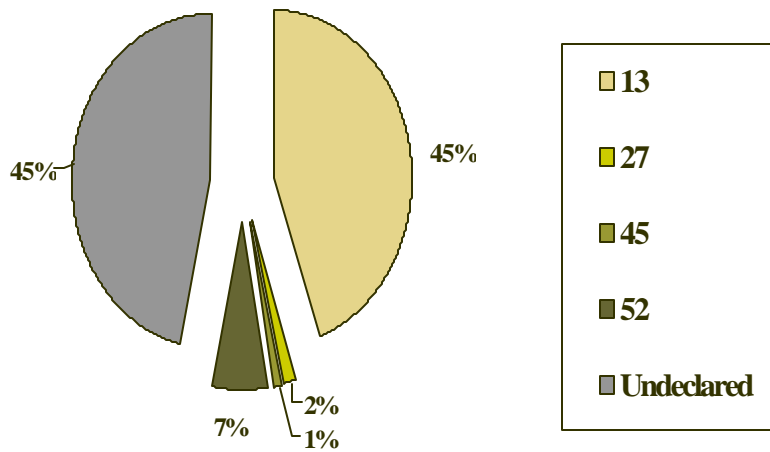
---

## Fall 2001 First-time Graduate Applicants

---

### Majors Fall 2001

---



---

Major (Cip Code)	Tally	Percentage
13	54	45%
27	2	2%
45	1	1%
52	8	6%
Undeclared	56	46%
<b>Total</b>	<b>121</b>	<b>100%</b>

---