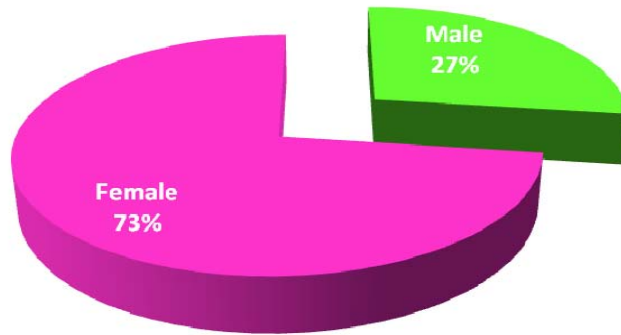
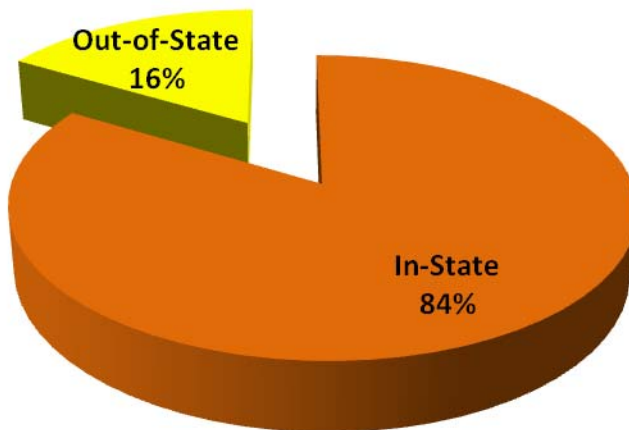


First Time Graduate Applicants Fall 2010 By Gender



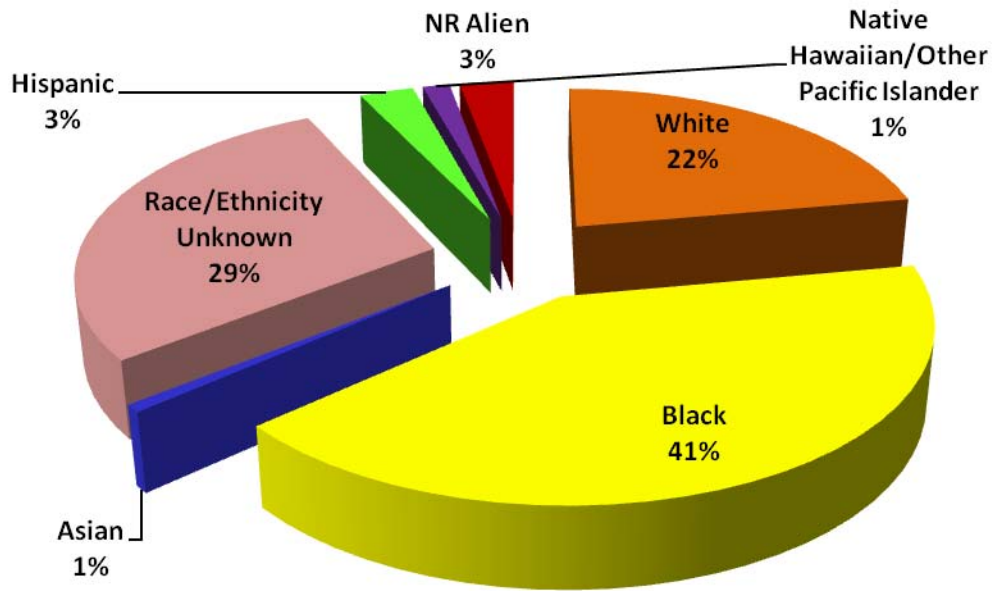
Gender	Tally	Percentage
Male	38	27%
Female	102	73%
Total	140	100%

By Residency



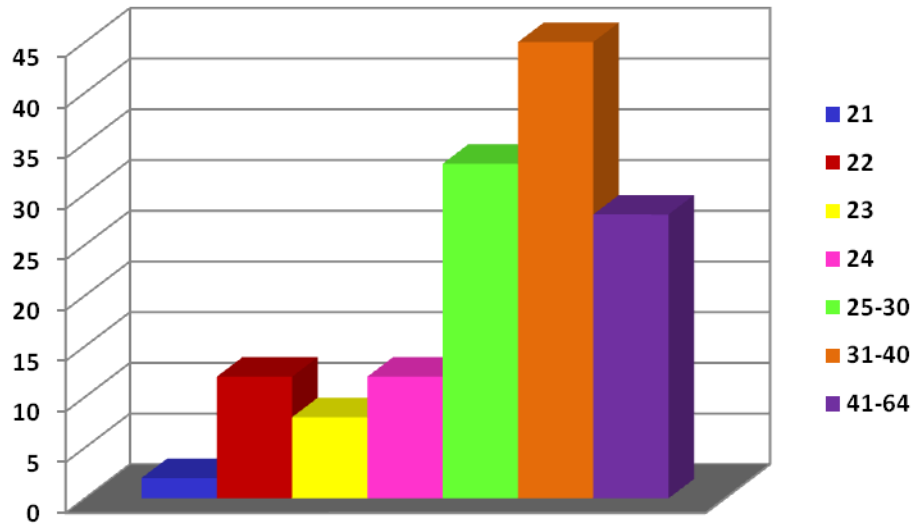
Residency	Tally	Percentage
In-State	117	84%
Out-of-State	23	16%
Total	140	100%

First Time Graduate Applicants Fall 2010 By Race



Race	Tally	Percentage
White	31	22%
Black	58	41%
Asian	1	1%
Race/Ethnicity Unknown	40	29%
Hispanic	4	3%
Native Hawaiian/Other Pacific Islander	2	1%
NR Alien	4	3%
Total	140	100%

First Time Graduate Applicants Fall 2010 By Age



Age	Tally	Percentage
21	2	1%
22	12	9%
23	8	5%
24	12	9%
25-30	33	24%
31-40	45	32%
41-64	28	20%
Total	140	100%