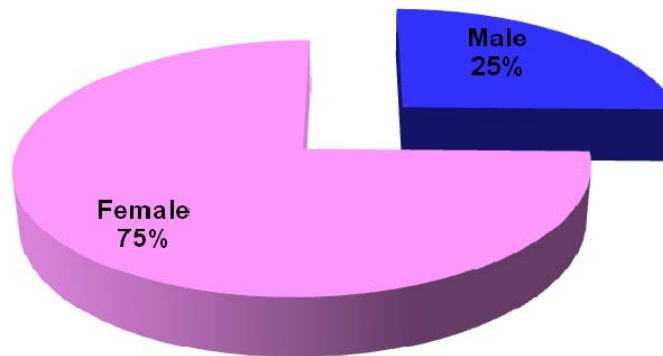
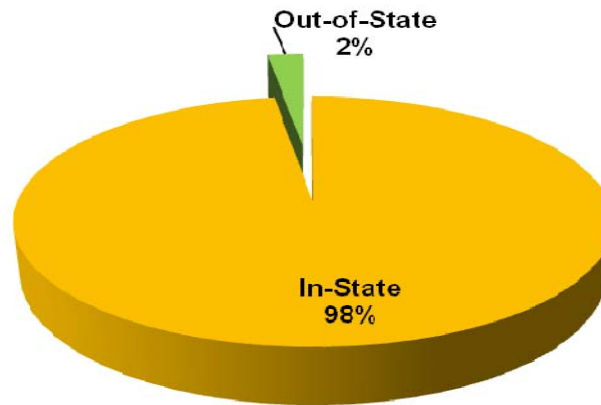


First Time Graduate Applicants Fall 2008 By Gender



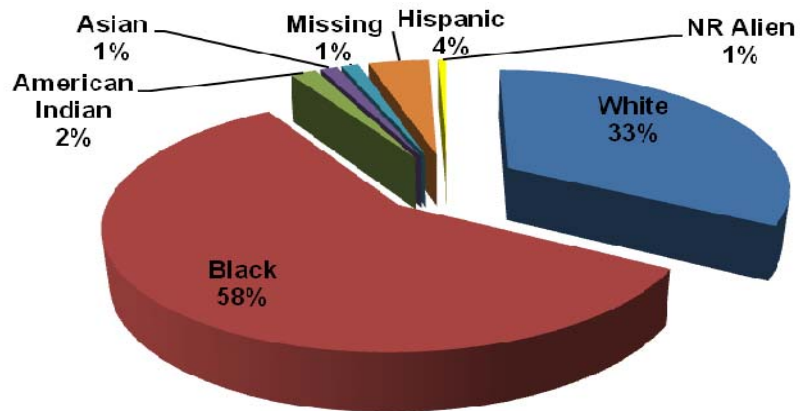
Gender	Tally	Percentage
Male	43	25%
Female	127	75%
Total	170	100%

By Residency



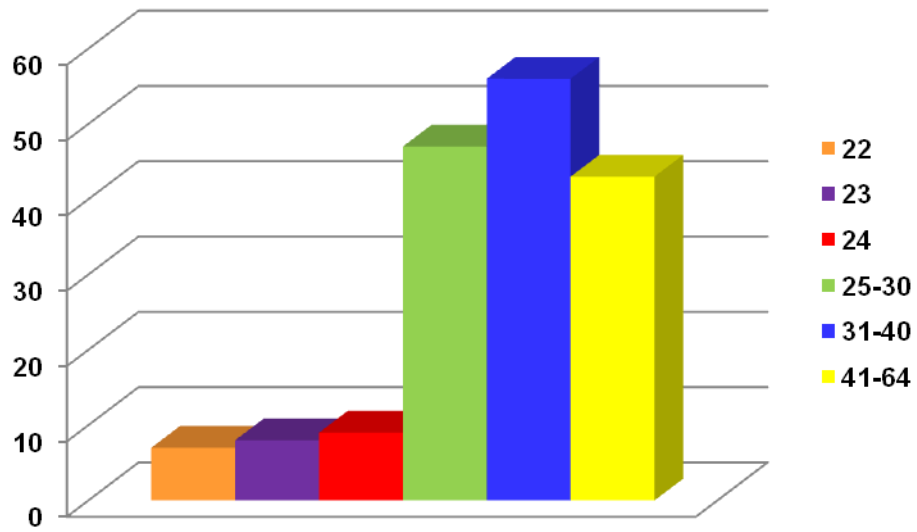
Residency	Tally	Percentage
In-State	166	98%
Out-of-State	4	2%
Total	170	100%

First Time Graduate Applicants Fall 2008 By Race



Race	Tally	Percentage
White	56	33%
Black	99	58%
American Indian	3	2%
Asian	2	1%
Missing	2	1%
Hispanic	7	4%
NR Alien	1	1%
Total	170	100%

First Time Graduate Applicants Fall 2008 By Age



Age	Tally	Percentage
22	7	4%
23	8	5%
24	9	5%
25-30	47	28%
31-40	56	33%
41-64	43	25%
Total	170	100%