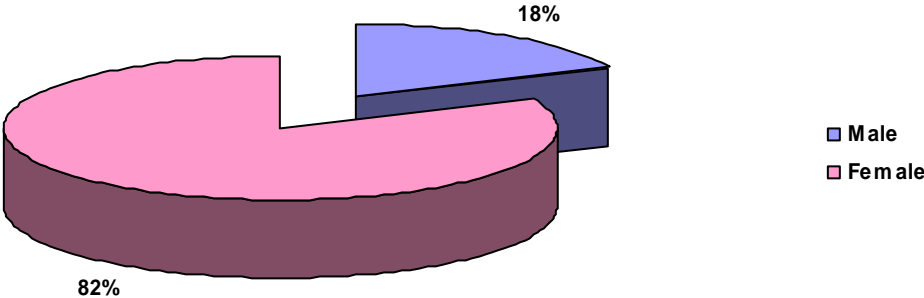
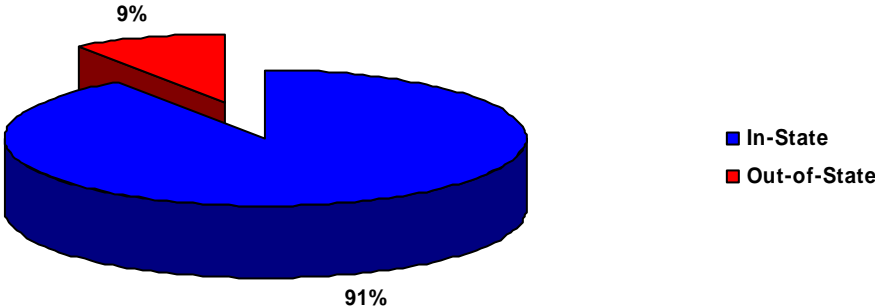


First-Time Graduate Applicants By Gender



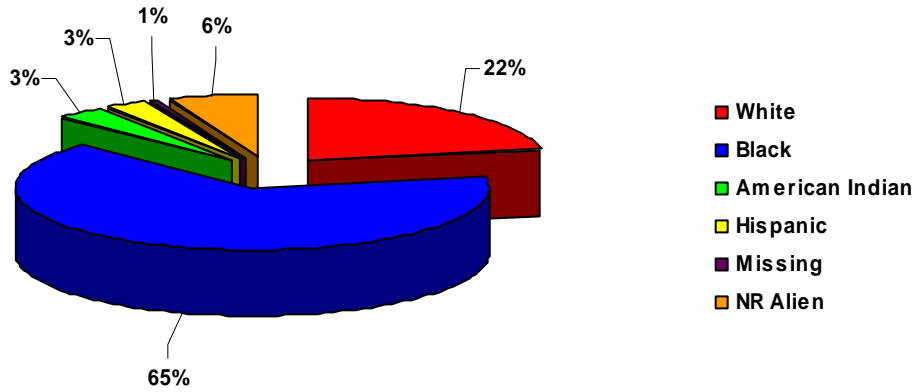
Gender	Tally	Percentage
Male	33	18.44%
Female	146	81.56%
Total	179	100.00%

By Residency



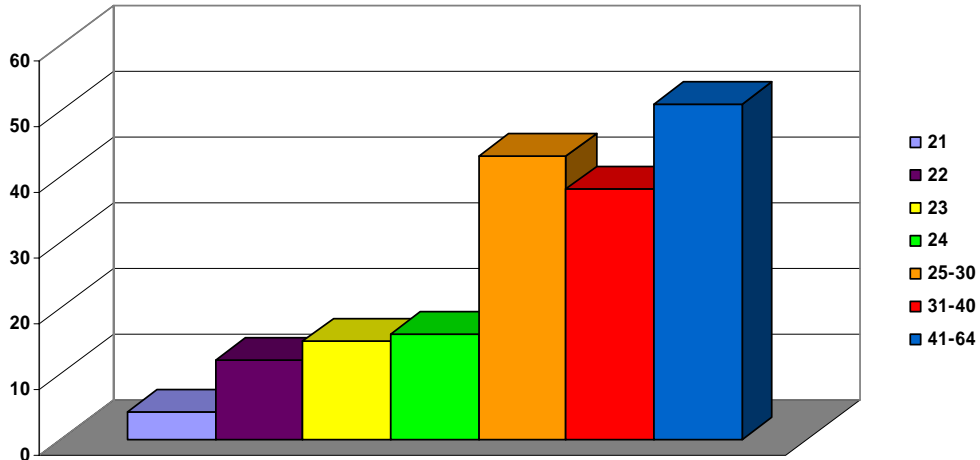
Residency	Tally	Percentage
In-State	162	90.50%
Out-of-State	17	9.50%
Total	179	100.00%

First-Time Graduate Applicants By Race



Race	Tally	Percentage
White	40	22.35%
Black	116	64.80%
American Indian	6	3.35%
Hispanic	5	2.79%
Missing	1	0.56%
NR Alien	11	6.15%
Total	179	100.00%

By Age



Age	Tally	Percentage
21	4	2.23%
22	12	6.70%
23	15	8.38%
24	16	8.94%
25-30	43	24.02%
31-40	38	21.23%
41-64	51	28.49%
Total	179	100.00%