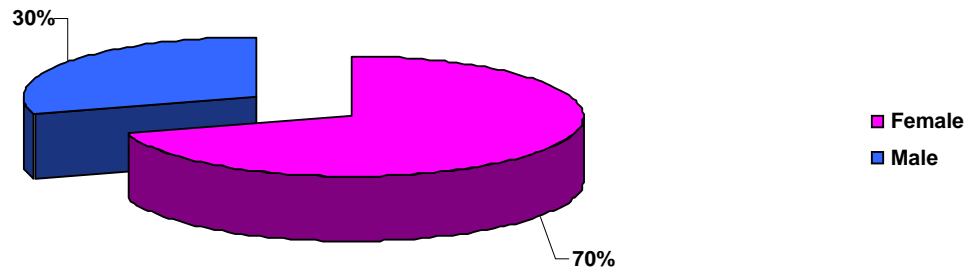
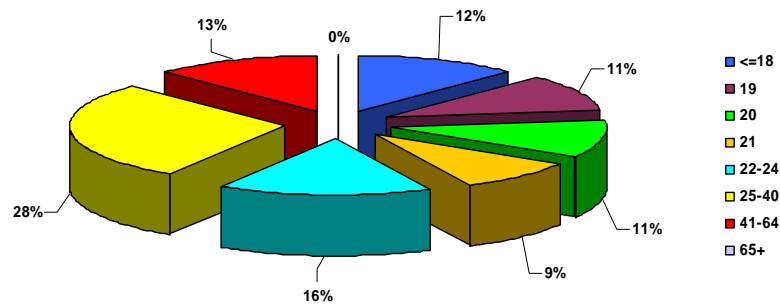


Total Student Enrollment for the Fall 2006 By Gender



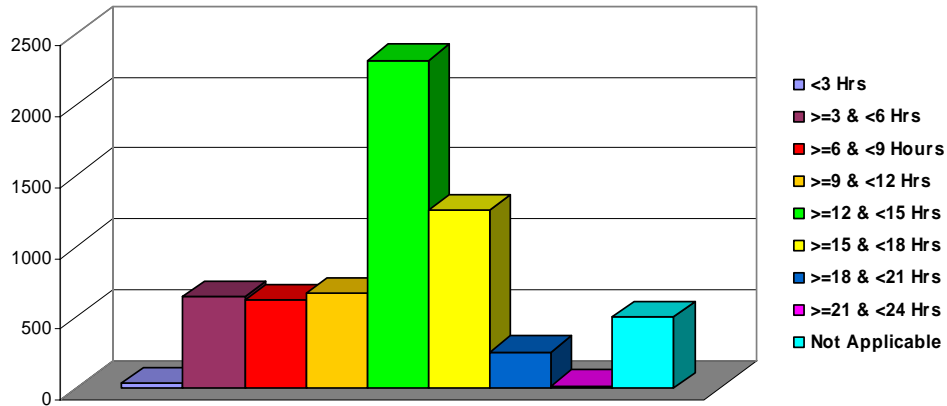
Gender	Tally	Percentage
Female	4429	70.29%
Male	1872	29.71%
Total	6301	100.00%

By Age



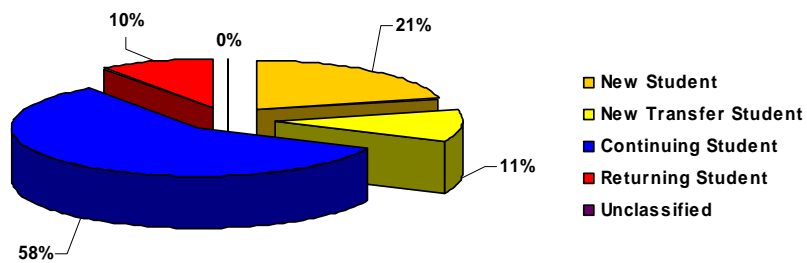
Age	Tally	Percentage
<=18	765	12.14%
19	677	10.74%
20	682	10.82%
21	575	9.13%
22-24	1011	16.05%
25-40	1795	28.49%
41-64	789	12.52%
65+	7	0.11%
Total	6301	100.00%

Total Student Enrollment for the Fall 2006 By Semester Credit Hours



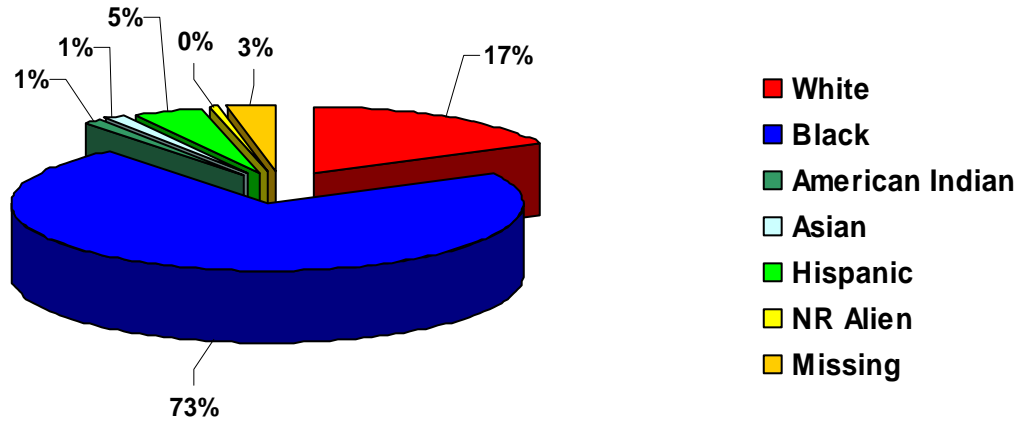
Credit Hours	Tally	Percentage
<3 Hrs	31	0.49%
>=3 & <6 Hrs	641	10.17%
>=6 & <9 Hrs	618	9.81%
>=9 & <12 Hrs	667	10.59%
>=12 & <15 Hrs	2317	36.77%
>=15 & <18 Hrs	1257	19.95%
>=18 & <21 Hrs	254	4.03%
>=21 & <24 Hrs	14	0.22%
Not Applicable	502	7.97%
Total	6301	100.00%

By Status



Status	Tally	Percentage
New Student	1350	21.43%
New Transfer Student	670	10.63%
Continuing Student	3655	58.01%
Returning Student	624	9.90%
Unclassified	2	0.03%
Total	6301	100.00%

Total Student Enrollment for the Fall 2006 By Race



Race	Tally	Percentage
White	1091	17.31%
Black	4544	72.12%
American Indian	74	1.17%
Asian	80	1.27%
Hispanic	285	4.52%
NR Alien	28	0.44%
Missing	199	3.16%
Total	6301	100.00%