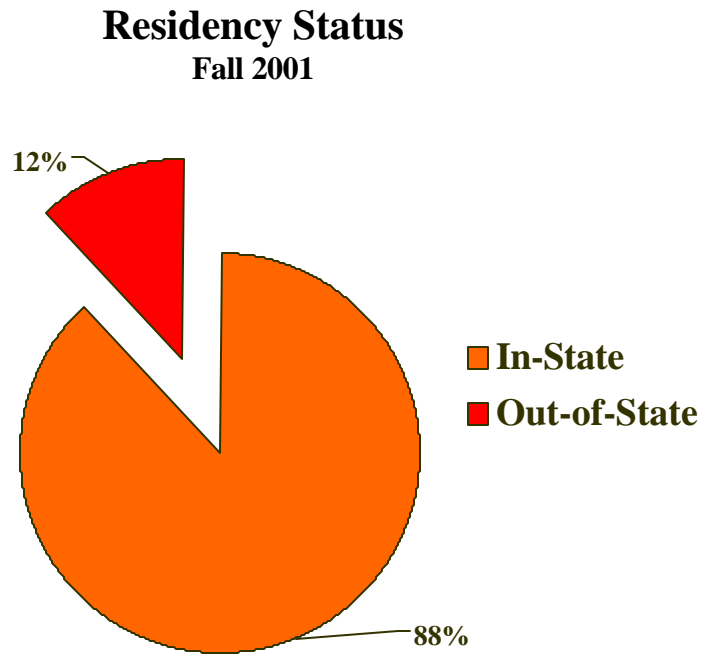


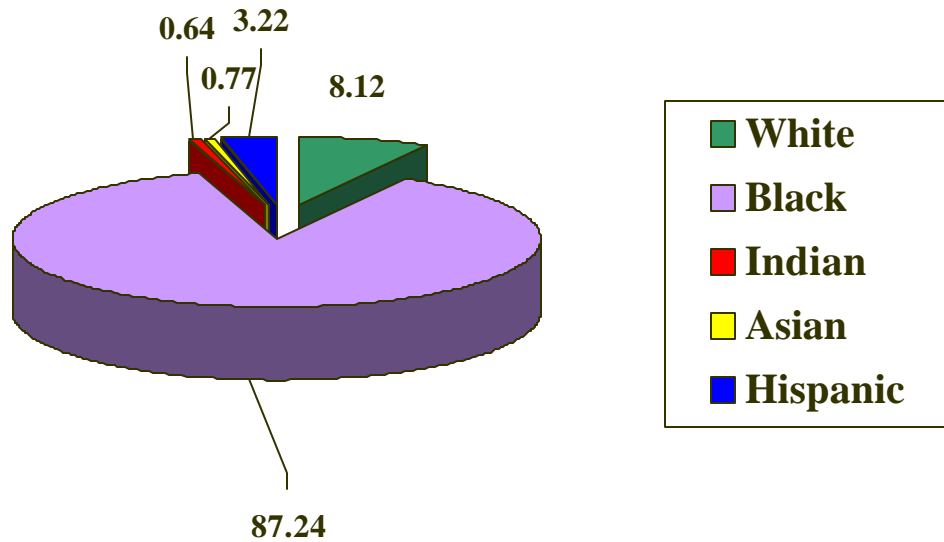
First-Time Freshmen **Enrolled** for the Fall 2001



Status	Tally	Percentage
In-State	683	88%
Out-of-State	93	12%
Total	776	100%

First-Time Freshmen **Enrolled** for the Fall 2001

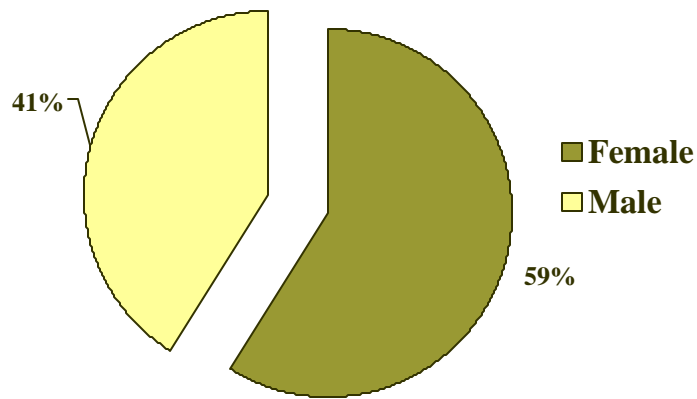
Ethnicity Status
Fall 2001



Race	Tally	Percentage
White	63	8%
Black	677	87%
Indian	5	<1%
Asian	6	<1%
Hispanic	25	3%
Total	776	100

First-Time Freshmen **Enrolled** for the Fall 2001

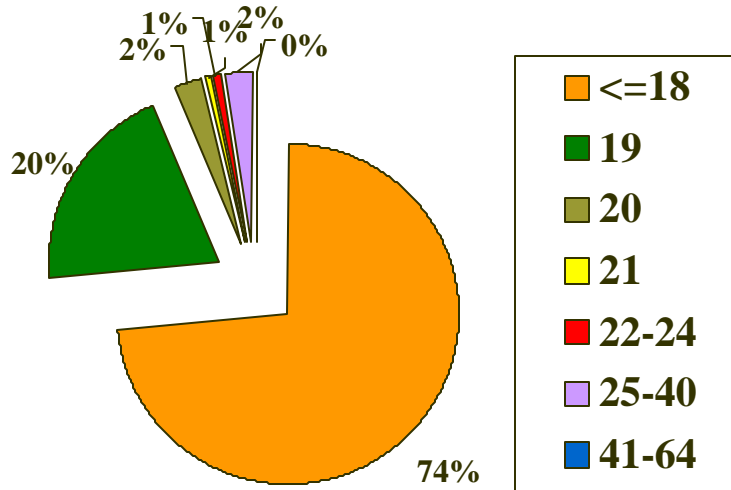
Gender Status
Fall 2001



Gender	Tally	Percentage
Female	460	59%
Male	316	41%
Total	776	100%

First-Time Freshmen **Enrolled** for the Fall 2001

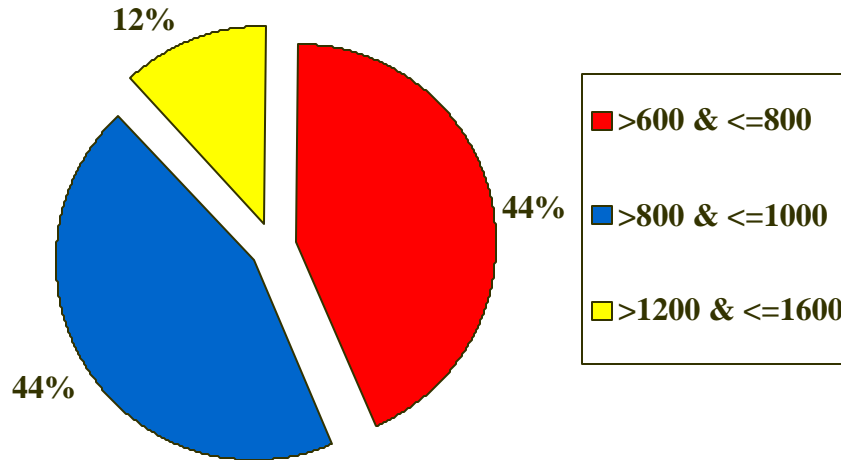
Age Status
Fall 2001



Age	Tally	Percentage
<=18	1174	74%
19	313	20%
20	33	2%
21	9	1%
22-24	12	1%
25-40	27	2%
41-64	2	0%
Total	776	100%

First-Time Freshmen **Enrolled** for the Fall 2001

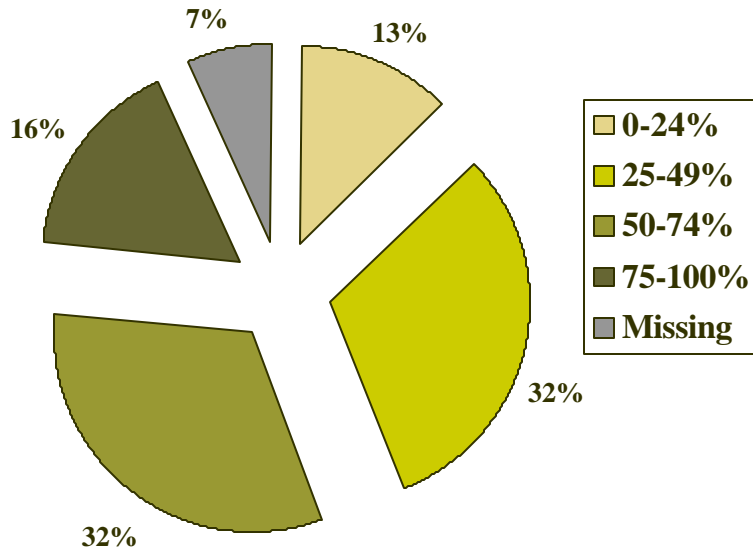
SAT Combined Score
Fall 2001



Score	Tally	Percentage
> 600 & <= 800	338	44%
> 800 & <= 1000	342	44%
> 1000 & <=1600	96	12%
Total	776	100%

First-Time Freshmen **Enrolled** for the Fall 2001

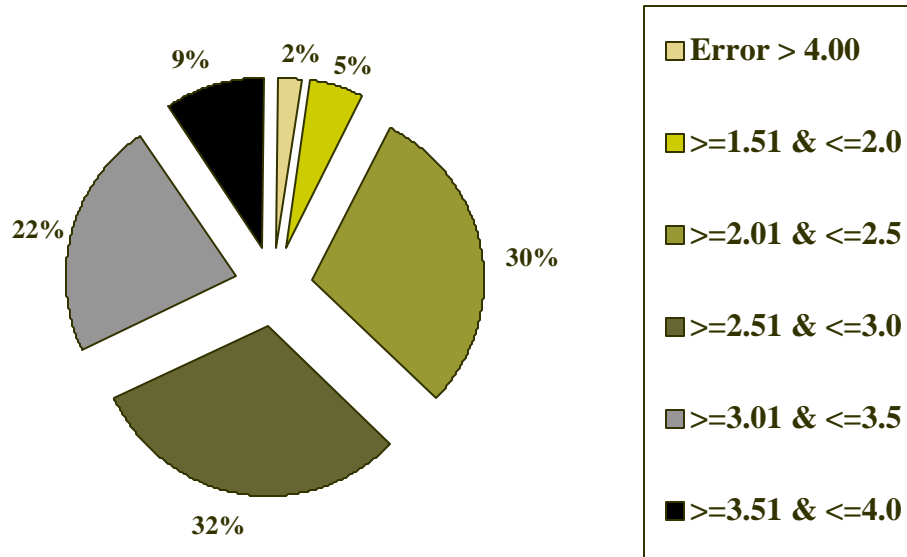
Class Rank In Quartiles
Fall 2001



Rank	Tally	Percentage
0 - 24%	97	13%
25 - 49%	245	32%
50 - 74%	250	32%
75 - 100%	127	16%
Missing/Other	57	7%
Total	776	100%

First-Time Freshmen **Enrolled** for the Fall 2001

High School GPA
Fall 2001



Status	Tally	Percentage
>= 1.51 & <= 2.0	40	5%
>= 2.01 & <= 2.5	232	30%
>= 2.51 & <= 3.0	240	31%
>= 3.01 & <= 3.5	174	22%
>= 3.51 & <= 4.0	73	9%
Missing/Error > 4.00	17	2%
Total	776	100%
