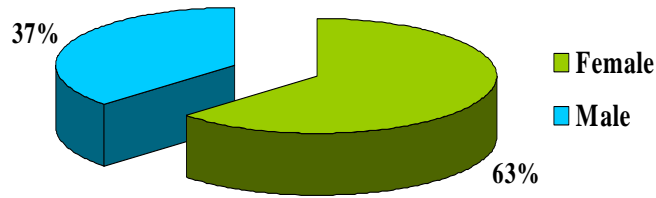


# First-time Freshmen Enrolled Fall 2004

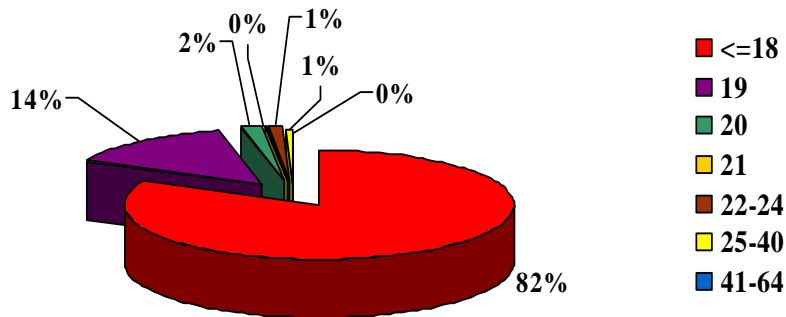
## By Gender

---



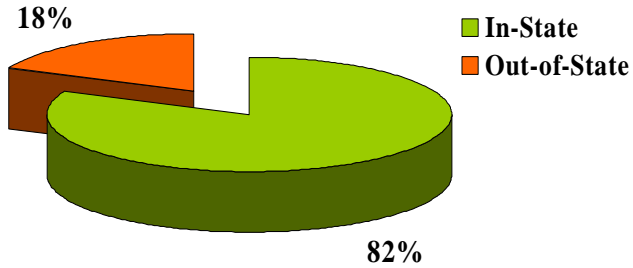
Gender	Tally	Percentage
Female	482	63.17%
Male	281	36.83%
<b>Total</b>	<b>763</b>	<b>100.00%</b>

## By Age



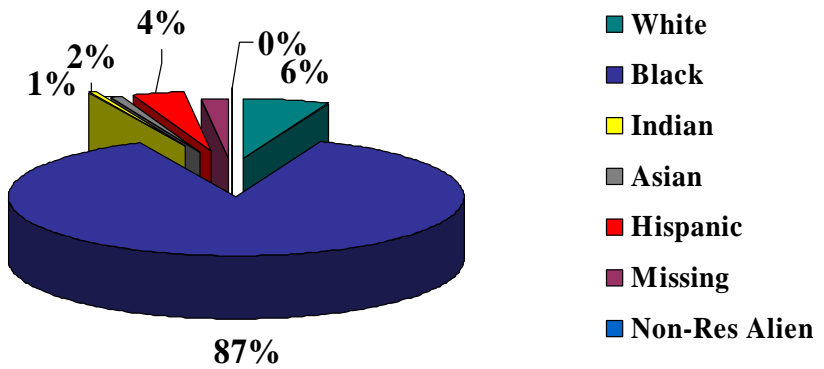
Age	Tally	Percentage
<=18	628	82.31%
19	107	14.02%
20	13	1.70%
21	3	0.39%
22-24	7	0.92%
25-40	4	0.52%
41-64	1	0.13%
<b>Total</b>	<b>763</b>	<b>100.00%</b>

# First-time Freshmen Enrolled Fall 2004 By Residency



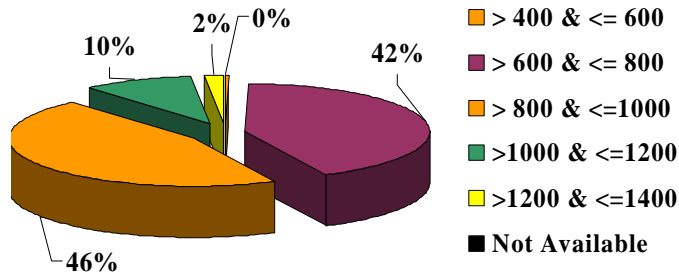
Residency	Tally	Percentage
In-State	624	81.78%
Out-of-State	139	18.22%
<b>Total</b>	<b>763</b>	<b>100.00%</b>

## By Race



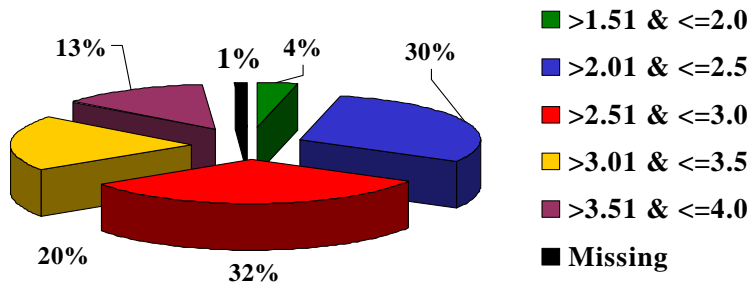
Race	Tally	Percentage
White	47	6.16%
Black	663	86.89%
American Indian	4	0.52%
Asian	6	0.79%
Hispanic	29	3.80%
NR Alien	13	1.70%
Missing/Other	1	0.13%
<b>Total</b>	<b>763</b>	<b>100.00%</b>

# First-time Freshmen Enrolled Fall 2004 By SAT Combined



SAT Combined	Tally	Percentage
>400 & <=600	3	0.39%
>600 & <=800	324	42.46%
>800 & <=1000	350	45.87%
>1000 & <=1200	73	9.57%
>1200 & <=1400	12	1.57%
Not Available	1	0.13%
<b>Total</b>	<b>763</b>	<b>100.00%</b>

## By High School GPA



High School GPA	Tally	Percentage
>1.51 & <=2.0	27	3.54%
>2.01 & <=2.5	227	29.75%
>2.51 & <=3.0	246	32.24%
>3.01 & <=3.5	152	19.92%
>3.51 & <=4.0	102	13.37%
Missing	9	1.18%
<b>Total</b>	<b>763</b>	<b>100.00%</b>