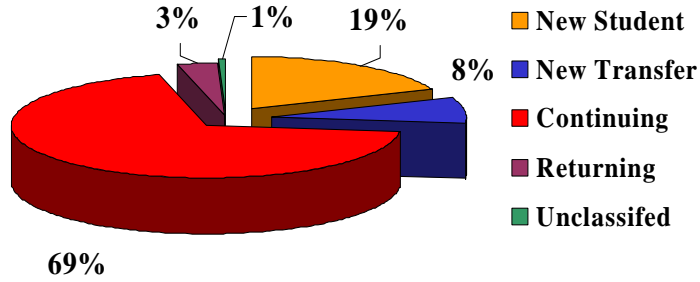
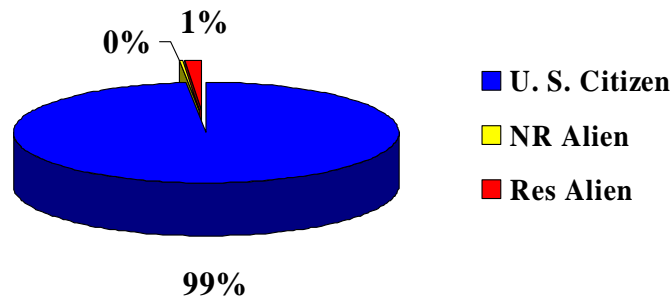


Total Student Enrollment for the Fall 2004 By Status



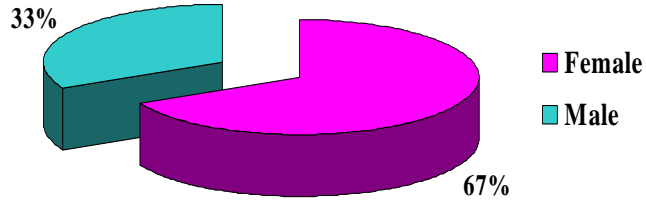
Status	Tally	Percentage
New Student	1,024	18.82%
New Transfer Student	422	7.76%
Continuing Student	3,776	69.40%
Returning Student	185	3.40%
Unclassified	34	0.62%
Total	5,441	100.00%

By Citizenship



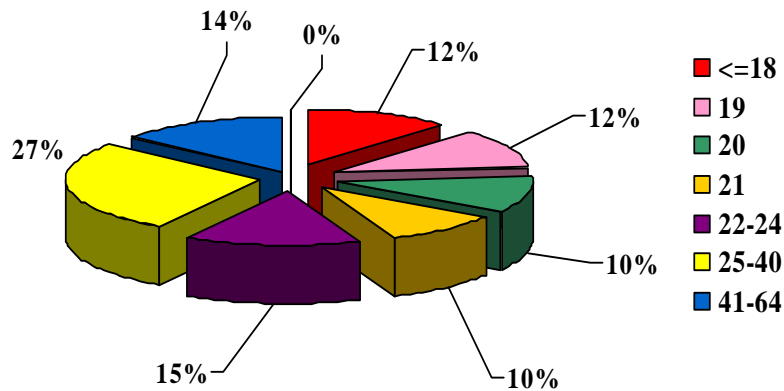
Citizenship	Tally	Percentage
U. S. Citizen	5,347	98.27%
NR Alien	24	0.44%
Resident Alien	70	1.29%
Total	5,441	100.00%

Total Student Enrollment for the Fall 2004 By Gender



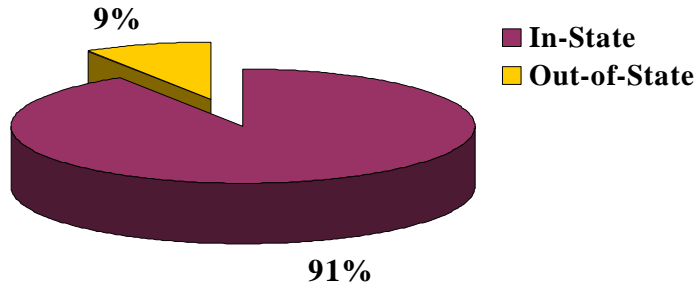
Gender	Tally	Percentage
Female	3,669	67.43%
Male	1,772	32.57%
Total	5,441	100.00%

By Age



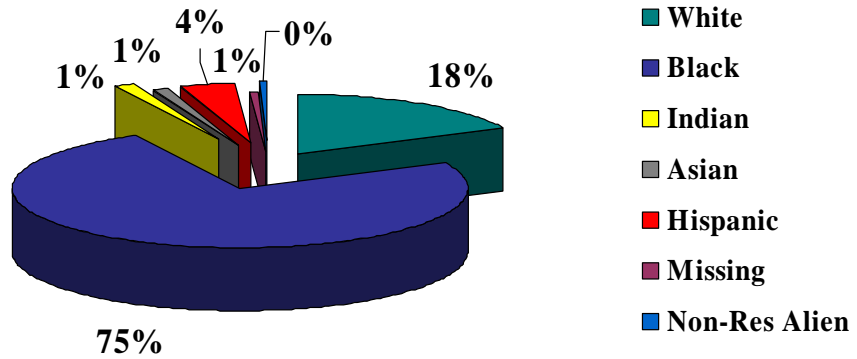
Age	Tally	Percentage
<=18	651	11.96%
19	640	11.76%
20	566	10.40%
21	538	9.89%
22-24	793	14.57%
25-40	1,480	27.20%
41-64	770	14.15%
65+	3	0.06%
Total	5,441	100.00%

Total Student Enrollment for the Fall 2004 By Residency



Residency	Tally	Percentage
In-State	4,954	91.05%
Out-of-State	487	8.95%
Total	5,441	100.00%

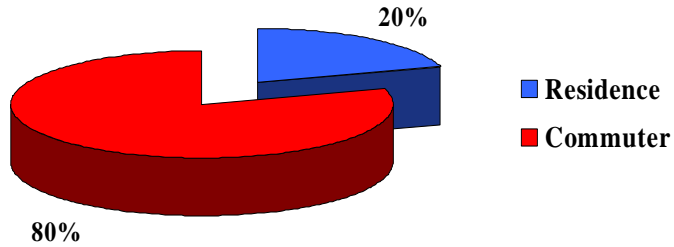
By Race



Race	Tally	Percentage
White	961	17.66%
Black	4,079	74.97%
American Indian	70	1.29%
Asian	55	1.01%
Hispanic	221	4.06%
NR Alien	31	0.57%
Missing/Other	24	0.44%
Total	5,441	100.00%

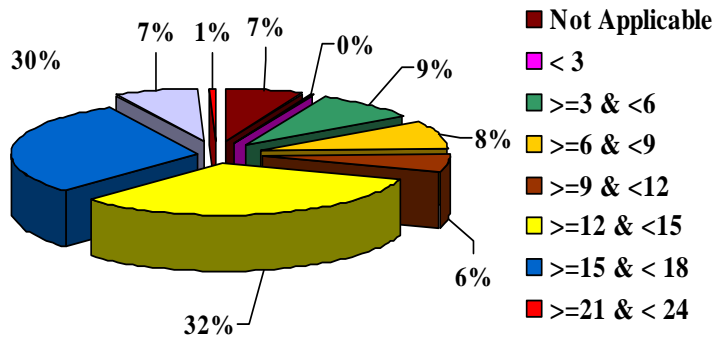
Total Student Enrollment for the Fall 2004

By Housing Status



Housing Status	Tally	Percentage
Residence	1,097	20.16%
Commuter	4,344	79.84%
Total	5,441	100.00%

By Semester Credit Hours



Semester Hours	Tally	Percentage
Not Applicable	362	6.65%
< 3 Hrs	13	0.24%
>= 3 & < 6 Hrs	491	9.02%
>= 6 & < 9 Hrs	464	8.53%
>= 9 & < 12 Hrs	320	5.88%
>= 12 & < 15 Hrs	1,746	32.09%
>= 15 & < 18 Hrs	1,616	29.70%
>= 18 & < 21 Hrs	394	7.24%
>= 21 & < 24 Hrs	35	0.64%
Total	5,441	100.00%