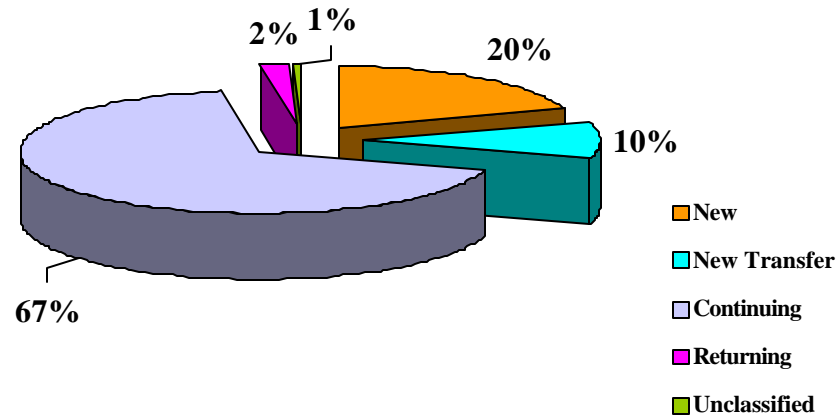


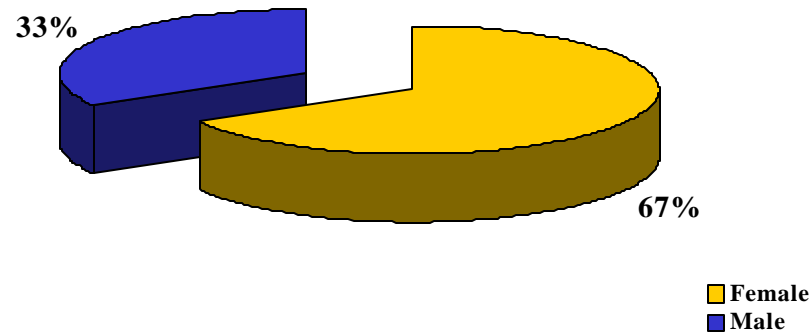
Fayetteville State University
Fayetteville, North Carolina



**Enrolled Main Campus and Distance Learning Students
By Enrollment Status
Fall 2002**

| Status | Tally | Percentage |
|--------------|-------|------------|
| New Student | 1065 | 20% |
| New Transfer | 513 | 10% |
| Continuing | 3597 | 68% |
| Returning | 103 | 2% |
| Unclassified | 30 | 0% |
| Total | 5308 | 100% |

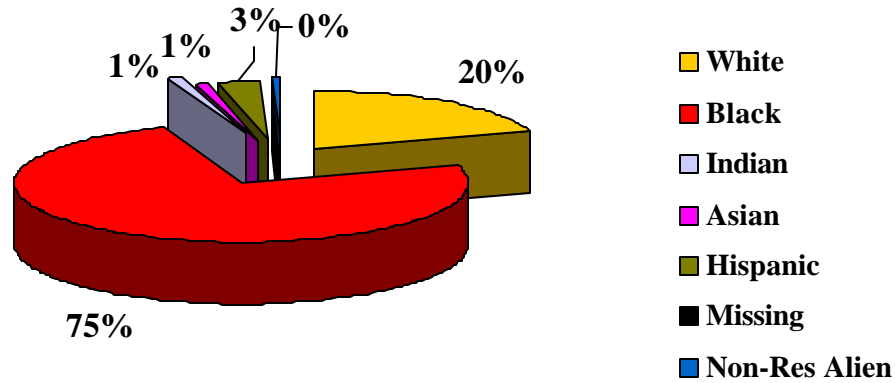
Fayetteville State University
Fayetteville, North Carolina



**Enrolled Main Campus and Distance Learning Students
By Gender
Fall 2002**

| Gender | Tally | Percentage |
|--------|-------|------------|
| Male | 1764 | 33% |
| Female | 3544 | 67% |
| Total | 5308 | 100% |

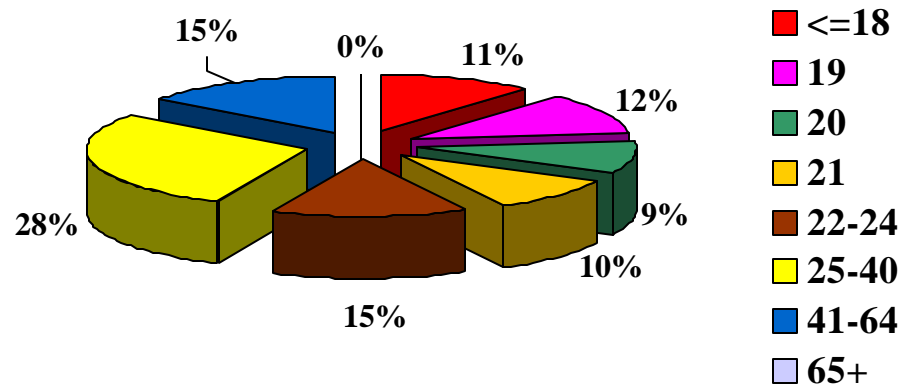
Fayetteville State University
Fayetteville, North Carolina



**Enrolled Main Campus and Distance Learning Students
By Race
Fall 2002**

| Race | Tally | Percentage |
|-----------------|-------|------------|
| White | 1064 | 20% |
| Black | 3910 | 74% |
| American Indian | 58 | 1% |
| Asian | 67 | 1% |
| Hispanic | 179 | 3% |
| Non-Res Alien | 25 | 1% |
| Missing/Other | 5 | 0% |
| Total | 5308 | 100% |

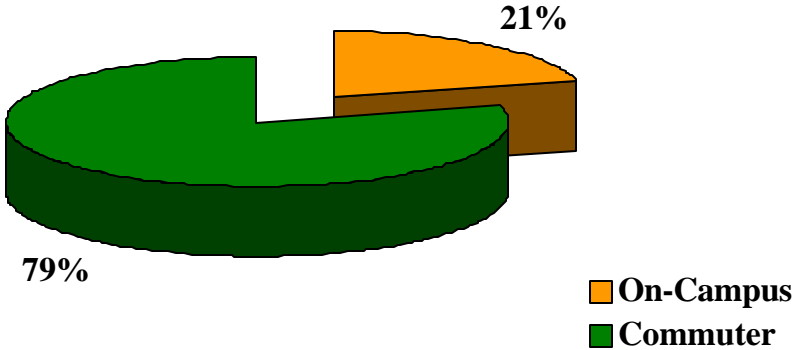
Fayetteville State University
Fayetteville, North Carolina



**Enrolled Main Campus and Distance Learning
Students By Age
Fall 2002**

| Age | Tally | Percentage |
|-------|-------|------------|
| <=18 | 599 | 11% |
| 19 | 624 | 12% |
| 20 | 497 | 9% |
| 21 | 518 | 10% |
| 22-24 | 774 | 15% |
| 25-40 | 1517 | 29% |
| 41-64 | 772 | 15% |
| 65+ | 7 | 0% |
| Total | 5308 | 100% |

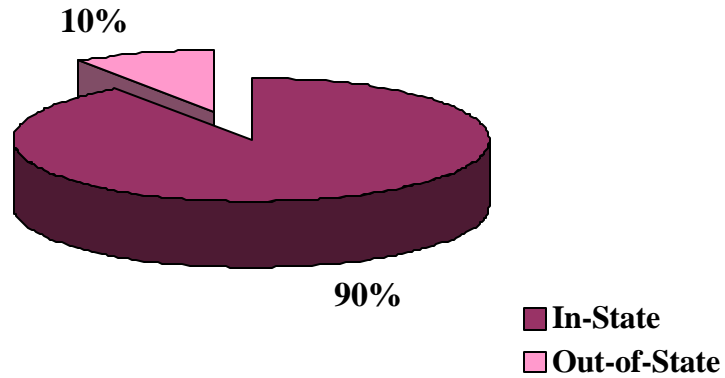
Fayetteville State University
Fayetteville, North Carolina



**Enrolled Main Campus and Distance Learning Students
By Housing Status
Fall 2002**

| Status | Tally | Percentage |
|----------------|-------|------------|
| Residence Hall | 1126 | 21% |
| Commuter | 4182 | 79% |
| Total | 5308 | 100% |

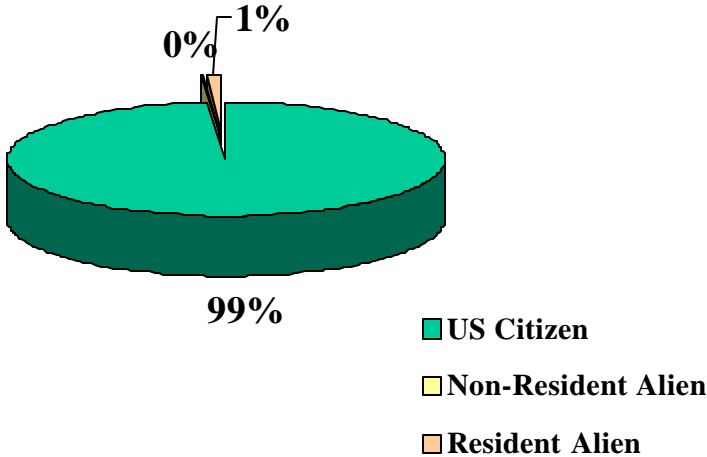
Fayetteville State University
Fayetteville, North Carolina



**Enrolled Main Campus and Distance Learning Students
By Residency
Fall 2002**

| Residency | Tally | Percentage |
|--------------|-------|------------|
| In-State | 4797 | 90% |
| Out-of-State | 511 | 10% |
| Total | 5308 | 100% |

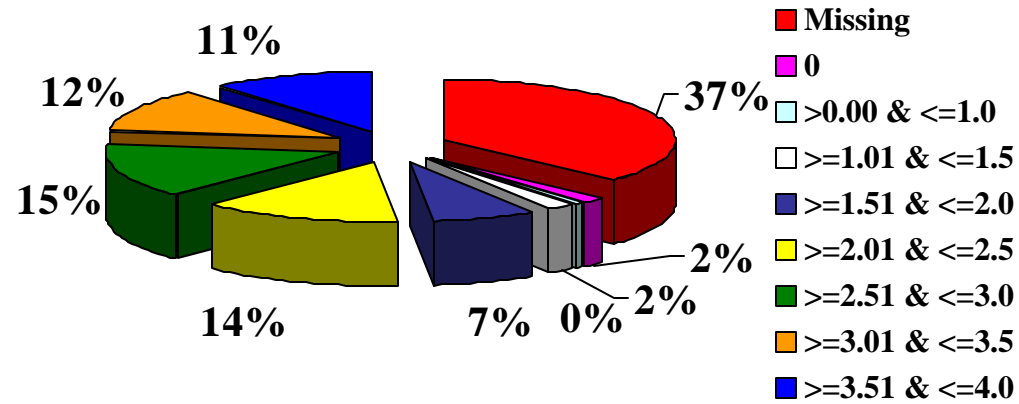
Fayetteville State University
Fayetteville, North Carolina



**Enrolled Main Campus and Distance Learning Students
By Citizenship
Fall 2002**

| Status | Tally | Percentage |
|--------------------|-------|------------|
| US Citizen | 5231 | 99% |
| Non-Resident Alien | 25 | 0% |
| Resident Alien | 52 | 1% |
| Total | 5308 | 100% |

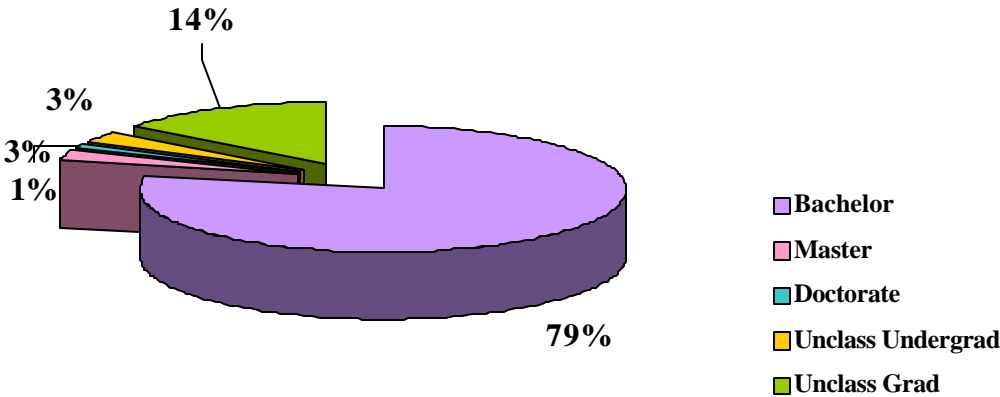
Fayetteville State University
Fayetteville, North Carolina



**Enrolled Main Campus and Distance Learning Students
Institutional Cumulative GPA
Fall 2002**

| Cumulative GPA | Tally | Percentage |
|-----------------|-------------|-------------|
| Missing | 1960 | 37% |
| 0.000 | 95 | 2% |
| >0.00 & <= 1.0 | 22 | 0% |
| >=1.01 & <=1.5 | 105 | 2% |
| >=1.51 * <= 2.0 | 379 | 7% |
| >=2.01 * <= 2.5 | 747 | 14% |
| >=2.51 * <= 3.0 | 774 | 15% |
| >=3.01 * <= 3.5 | 619 | 12% |
| >=3.51 * <= 4.0 | 607 | 11% |
| Total | 5308 | 100% |

Fayetteville State University
Fayetteville, North Carolina



**Enrolled Main Campus and Distance Learning Students
By Degree Intent
Fall 2002**

| Degree Intent | Tally | Percentage |
|-------------------|-------|------------|
| Bachelor's | 4154 | 79% |
| Master's | 173 | 3% |
| Doctorate | 46 | 1% |
| Unclass Undergrad | 174 | 3% |
| Unclass Grad | 761 | 14% |
| Total | 5308 | 100% |
