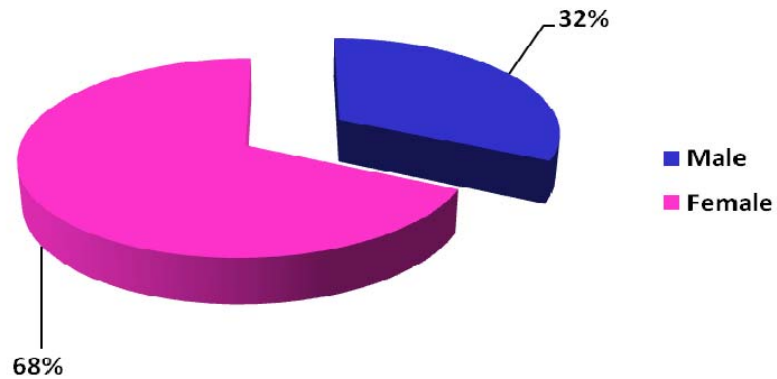
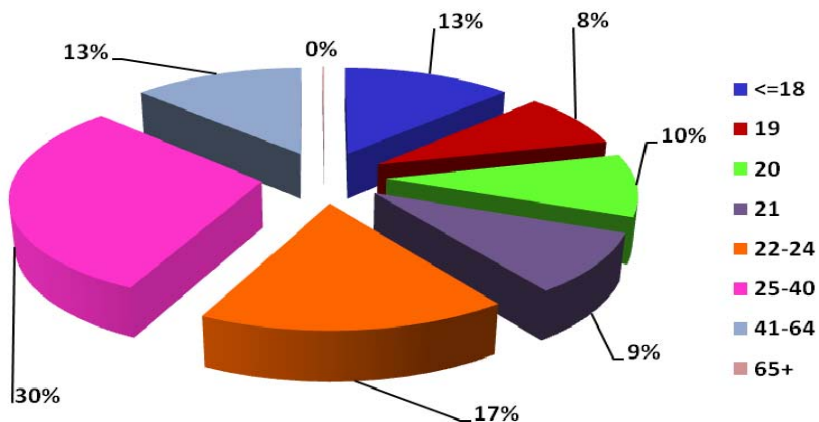


Total Student Enrollment for Fall 2009 By Gender



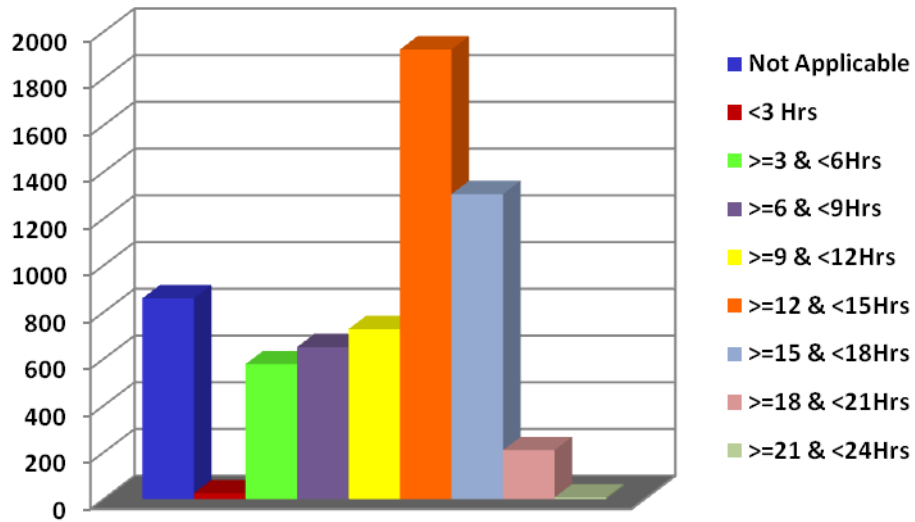
Gender	Tally	Percentage
Male	2,009	32%
Female	4,274	68%
Total	6,283	100%

By Age



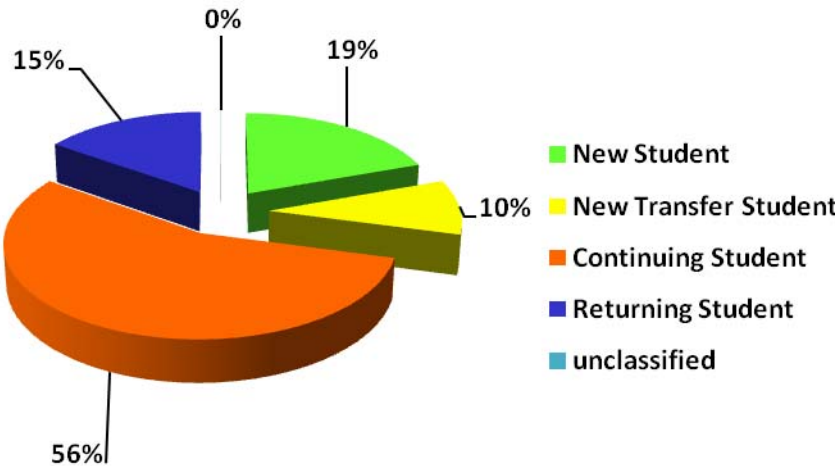
Age	Tally	Percentage
<=18	802	13%
19	531	8%
20	602	10%
21	585	9%
22-24	1,072	17%
25-40	1,882	30%
41-64	802	13%
65+	7	0%
Total	6,283	100%

Total Student Enrollment for Fall 2009 By Semester Credit Hours



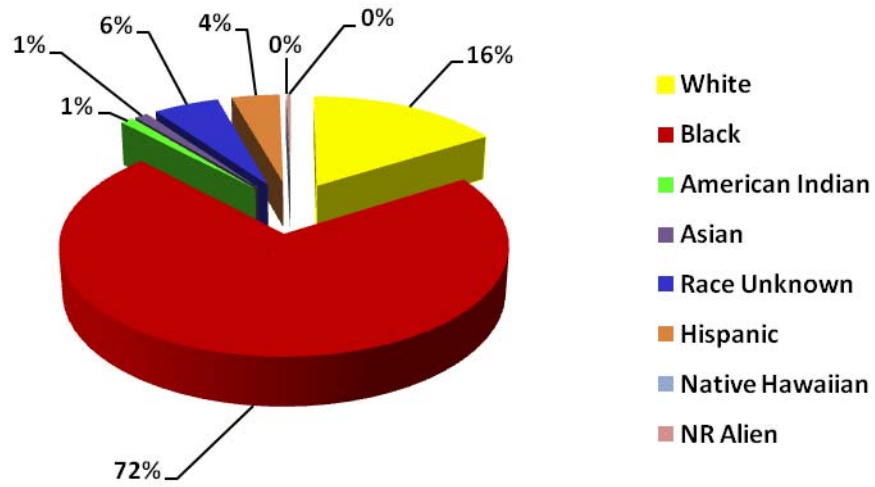
Credit Hours	Tally	Percentage
Not Applicable	859	14%
<3 Hrs	25	0%
>=3 & <6Hrs	577	9%
>=6 & <9Hrs	650	10%
>=9 & <12Hrs	727	12%
>=12 & <15Hrs	1,924	31%
>=15 & <18Hrs	1,305	21%
>=18 & <21Hrs	209	3%
>=21 & <24Hrs	7	0%
Total	6,283	100%

Total Student Enrollment for Fall 2009 By Status



Status	Tally	Percentage
New Student	1,227	19%
New Transfer Student	601	10%
Continuing Student	3,495	56%
Returning Student	958	15%
unclassified	2	0%
Total	6,283	100%

Total Student Enrollment for Fall 2009 By Race



Race	Tally	Percentage
White	1,014	16%
Black	4,504	72%
American Indian	71	1%
Asian	70	1%
Race Unknown	347	6%
Hispanic	255	4%
Native Hawaiian	2	0%
NR Alien	20	0%
Total	6,283	100%