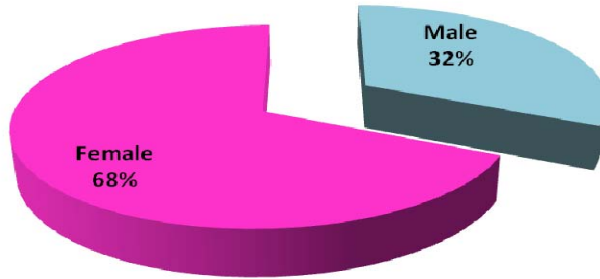
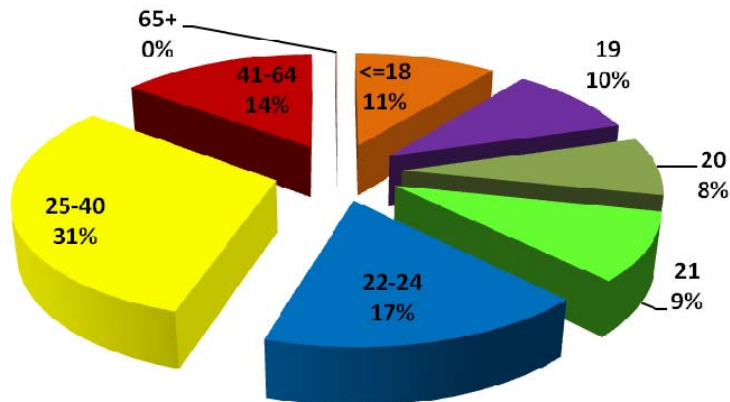


Total Student Enrollment for Fall 2010 By Gender



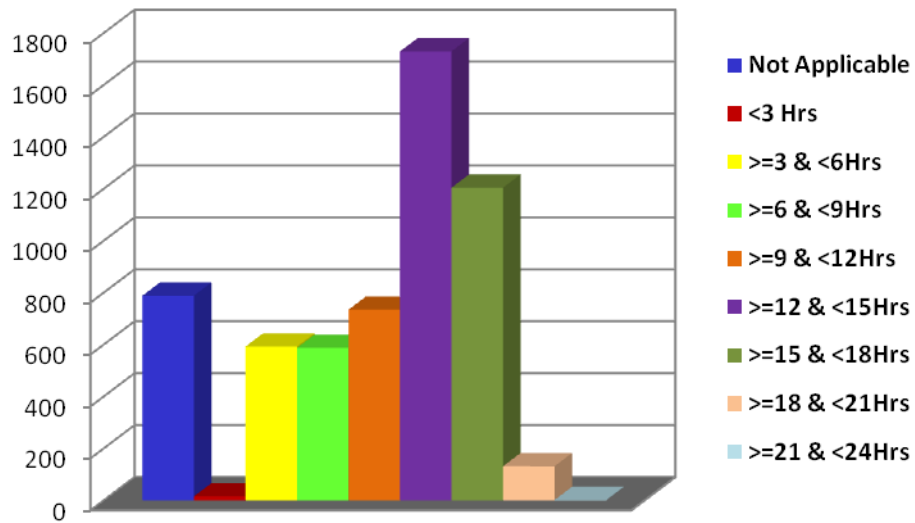
Gender	Tally	Percentage
Male	1842	32%
Female	3939	68%
Total	5781	100%

By Age



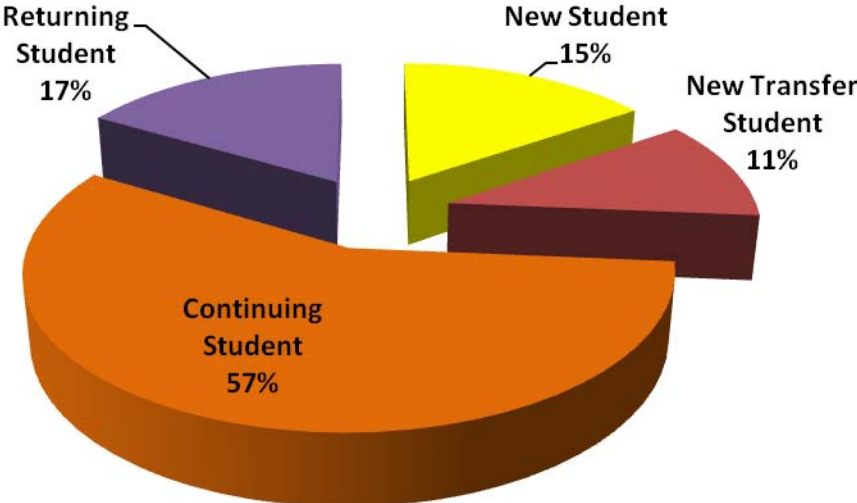
Age	Tally	Percentage
<=18	608	11%
19	569	10%
20	464	8%
21	538	9%
22-24	985	17%
25-40	1775	31%
41-64	834	14%
65+	8	0%
Total	5781	100%

Total Student Enrollment for Fall 2010 By Semester Credit Hours



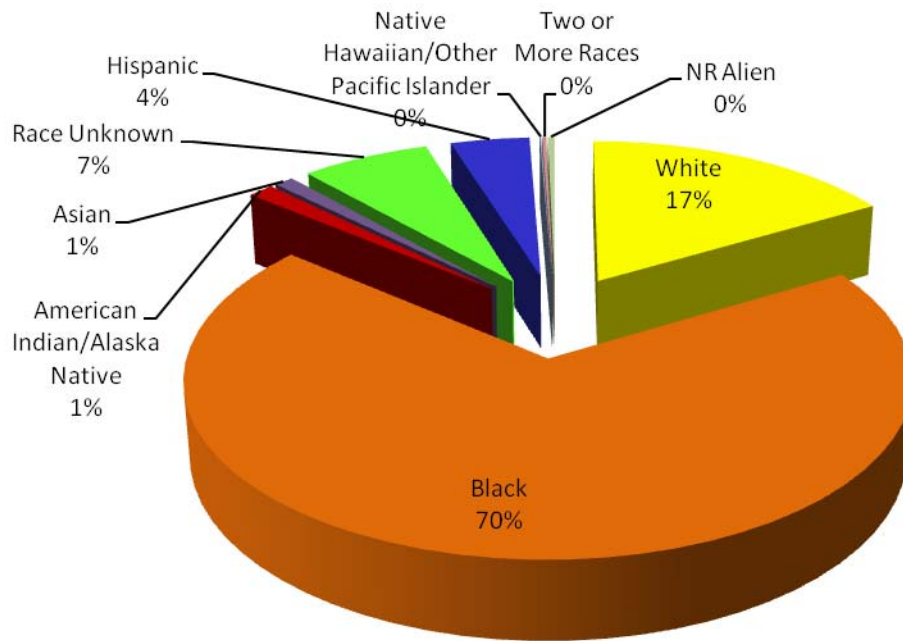
Credit Hours	Tally	Percentage
Not Applicable	788	14%
<3 Hrs	15	0%
>=3 <6Hrs	592	10%
>=6 <9Hrs	587	10%
>=9 <12Hrs	734	13%
>=12 <15Hrs	1729	30%
>=15 <18Hrs	1204	21%
>=18 <21Hrs	131	2%
>=21 <24Hrs	1	0%
Total	5781	100%

Total Student Enrollment for Fall 2010 By Status



Status	Tally	Percentage
New Student	891	15%
New Transfer Student	632	11%
Continuing Student	3303	57%
Returning Student	955	17%
Total	5781	100%

Total Student Enrollment for Fall 2010 By Race



Race	Tally	Percentage
White	955	17%
Black	4018	70%
American Indian/Alaska Native	79	1%
Asian	60	1%
Race Unknown	389	7%
Hispanic	241	4%
Native Hawaiian/Other Pacific Islander	5	0%
Two or More Races	13	0%
NR Alien	21	0%
Total	5781	100%