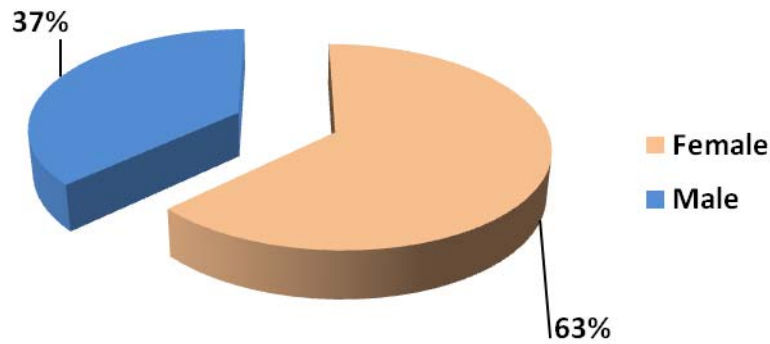


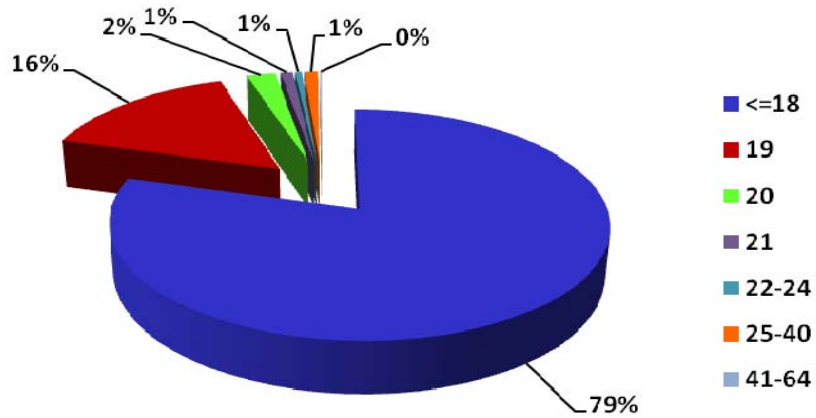
## First-time Freshmen Enrolled Fall 2009 By Gender

---



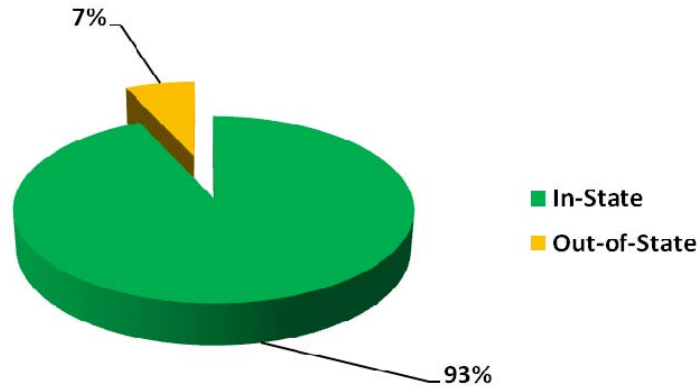
Gender	2009	Percentage
Female	480	63%
Male	282	37%
Total	762	100%

## By Age



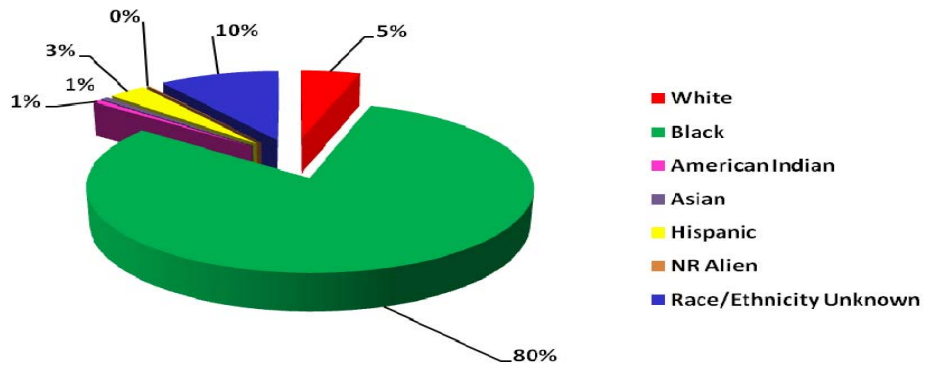
Age	2009	Percentage
<=18	607	79%
19	118	16%
20	17	2%
21	7	1%
22-24	4	1%
25-40	8	1%
41-64	1	0%
Total	762	100%

## First-time Freshmen Enrolled Fall 2009 By Residency



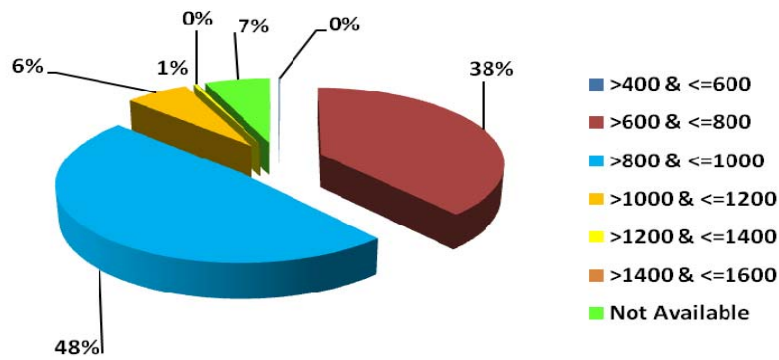
Residency	2009	Percentage
In-State	712	93%
Out-of-State	50	7%
<b>Total</b>	<b>762</b>	<b>100%</b>

## By Race



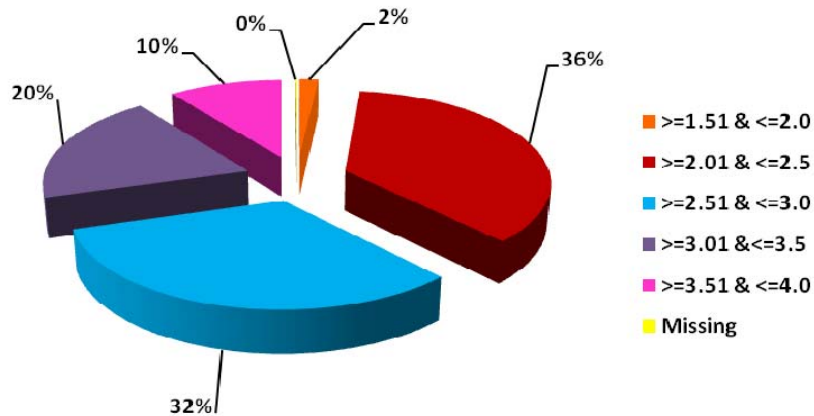
Race	2009	Percentage
White	38	5%
Black	610	80%
American Indian	5	1%
Asian	5	1%
Hispanic	25	3%
NR Alien	1	0%
Race/Ethnicity Unknown	78	10%
<b>Total</b>	<b>762</b>	<b>100%</b>

## First-time Freshmen Enrolled Fall 2009 By SAT Combined



SAT Combined	2009	Percentage
>400 & <=600	1	0%
>600 & <=800	291	38%
>800 & <=1000	368	48%
>1000 & <=1200	49	6%
>1200 & <=1400	4	1%
>1400 & <=1600	0	0%
Not Available	49	7%
<b>Total</b>	<b>762</b>	<b>100%</b>

## By High School GPA



High School GPA	2009	Percentage
>=1.51 & <=2.0	13	2%
>=2.01 & <=2.5	276	36%
>=2.51 & <=3.0	247	32%
>=3.01 & <=3.5	148	20%
>=3.51 & <=4.0	77	10%
Missing	1	0%
<b>Total</b>	<b>762</b>	<b>100%</b>