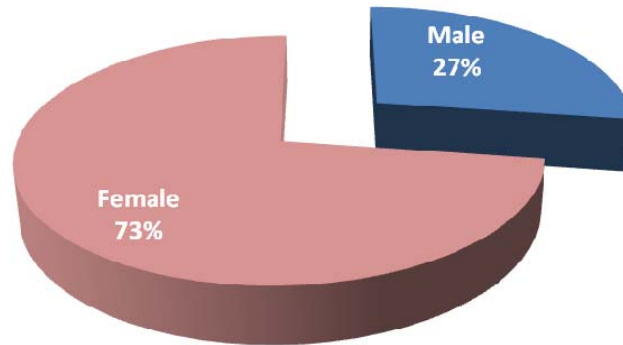
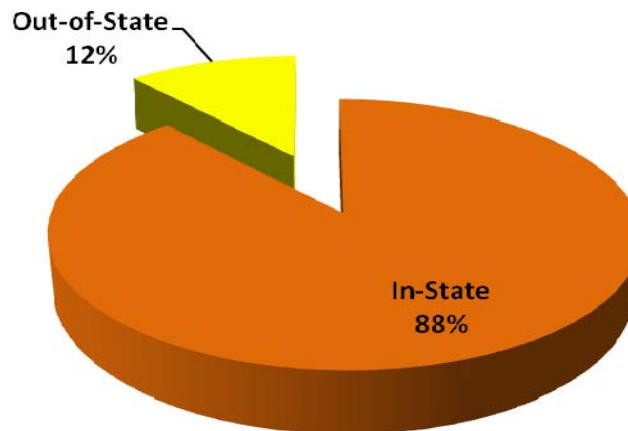


Transfer Applicants Fall 2010 By Gender



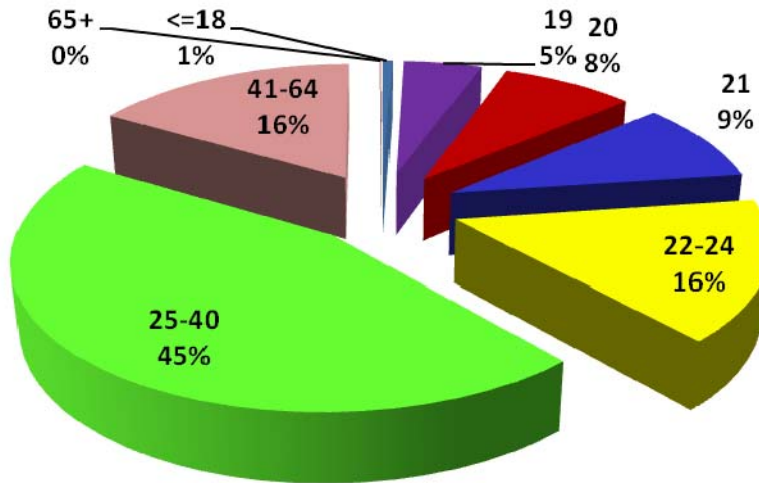
Gender	Tally	Percentage
Male	334	27%
Female	890	73%
Total	1224	100%

By Residency



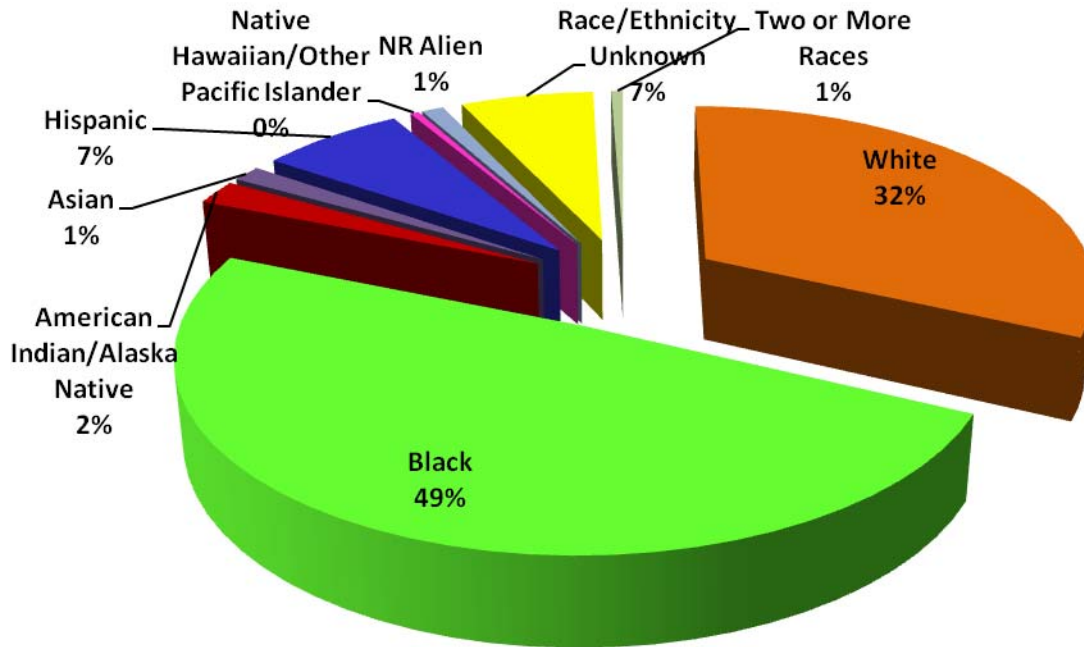
Residency	Tally	Percentage
In-State	1083	88%
Out-of-State	141	12%
Total	1224	100%

Transfer Applicants Fall 2010 By Age



Age	Tally	Percentage
<=18	7	1%
19	60	5%
20	101	8%
21	111	9%
22-24	191	16%
25-40	552	45%
41-64	201	16%
65+	1	0%
Total	1224	100%

Transfer Applicants Fall 2010 By Race



Race	Tally	Percentage
White	391	32%
Black	601	49%
American Indian/Alaska Native	26	2%
Asian	17	2%
Hispanic	85	7%
Native Hawaiian/Other Pacific Islander	5	0%
NR Alien	13	1%
Race/Ethnicity Unknown	79	6%
Two or More Races	7	1%
Total	1224	100%