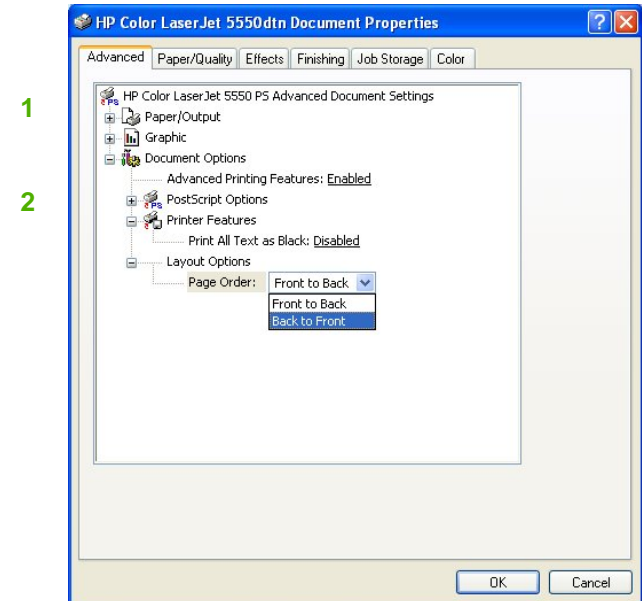


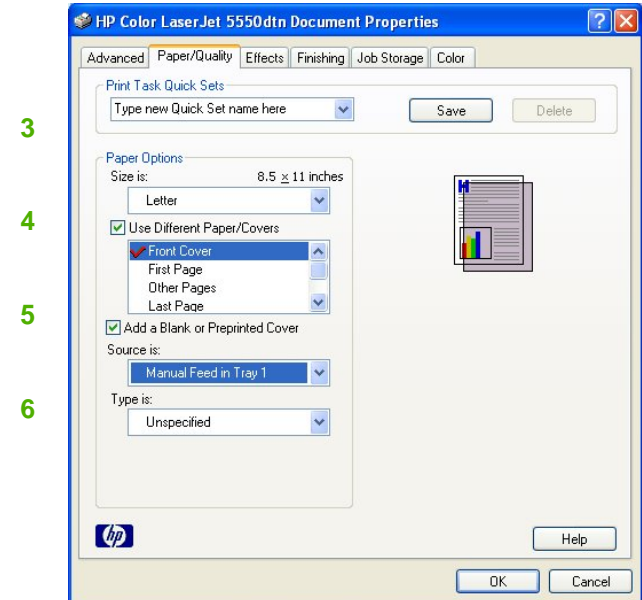
# HP Color LaserJet 5500/5550 - Print



How do I:	Steps to perform
1 Access the printer driver.	Click on <b>File, Print</b> in your application, and choose <b>Properties</b> .
2 Select advanced printing options.	Click on the <b>Advanced</b> tab. Select options under the <b>Paper/Output, Graphic, or Document Options</b> sections. Click a current setting to activate a drop-down list or spin box where you can enter a new value. Click <b>OK</b> when finished. For example, to change the order of pages as they print, click the arrow by Layout Options, and then select <b>Page Order: Front to Back</b> (page 1 is on the top of the stack) or <b>Back to Front</b> (page 1 is on the bottom of the stack).



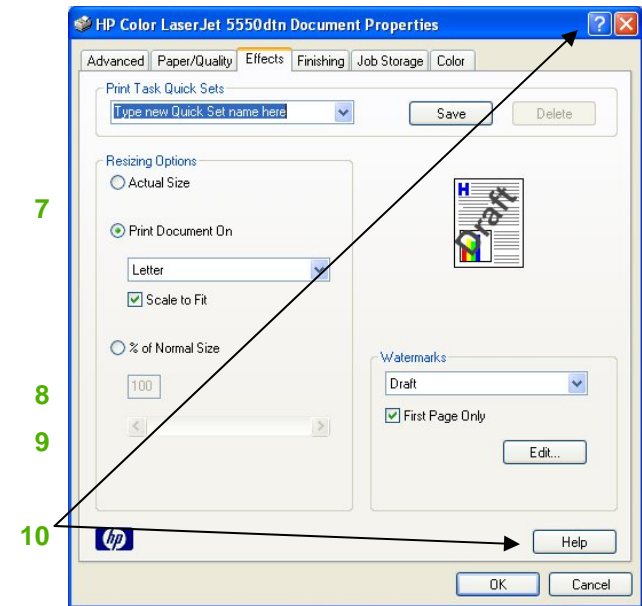
How do I:	Steps to perform
3 Save a Quick Set (the printer driver must be stored on your PC for this to work).	Adjust settings on any or all tabs. To add a Quick Set, type a name in the <b>Print Task Quick Sets</b> field and click <b>Save</b> . To delete a Quick Set, display it in the <b>Quick Sets</b> field and click <b>Delete</b> .
4 Select a page size.	Click on the <b>Paper/Quality</b> tab, and then click the <b>Paper size</b> drop-down menu, then select a paper size. Click <b>Custom</b> if the paper size you want is not in the menu.
5 Select a paper source.	Click the <b>Paper Source</b> drop-down menu, then select a paper tray. Use Manual Feed for printing special media such as transparencies, labels, or envelopes.
6 Select a paper type.	Click the <b>Paper Type</b> drop-down menu, then select a paper type.



# HP Color LaserJet 5500/5550 - Print



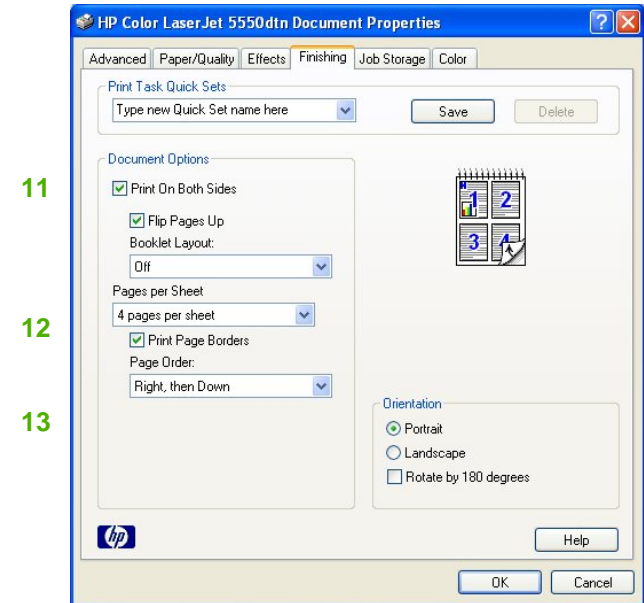
How do I:	Steps to perform
7 Scale a page to fit on a selected paper size.	Click on the <b>Effects</b> tab, click on the <b>Print Document On</b> , select a paper size, and then click <b>Scale to Fit</b> .
8 Print a watermark.	Click on the <b>Watermark</b> drop-down menu, and then select an existing watermark.
9 Add or edit watermarks (the printer driver must be stored on your PC for this to work).	Click <b>Edit</b> . Highlight an existing watermark and make adjustments to its angle and font attributes. Click <b>New</b> to add a new watermark, and then type in a new name. Click <b>OK</b> to save the settings.
10 Get help for any printing option.	While in either tab, or from the <b>Advanced Options</b> dialog box, click the <b>question mark</b> in the upper-right side of the top border, then click on a print control. A pop-up message displays help for that control. Click again to remove the pop-up message. Click <b>Help</b> for on-line help.



# HP Color LaserJet 5500/5550 - Print



How do I:	Steps to perform
11 Print on both sides (Duplex).	Click on the <b>Finishing</b> tab, and then click <b>Print on Both Sides</b> . If you will bind the document along the top, click <b>Flip Pages Up</b> .
12 Print multiple pages per sheet.	Select a number (between 1 and 16) in the <b>Pages Per Sheet</b> drop down menu. Click <b>Print Page Borders</b> to add a box around each printed page. You can also change the <b>Page Order</b> .
13 Select page orientation.	Select an option in the <b>Orientation</b> box. In addition to the <b>Portrait</b> and <b>Landscape</b> orientation options, you can select the <b>Rotate by 180 degrees</b> check box. This creates a landscape or portrait orientation in which the image is rotated 180°. This setting is useful for printing prepunched paper.

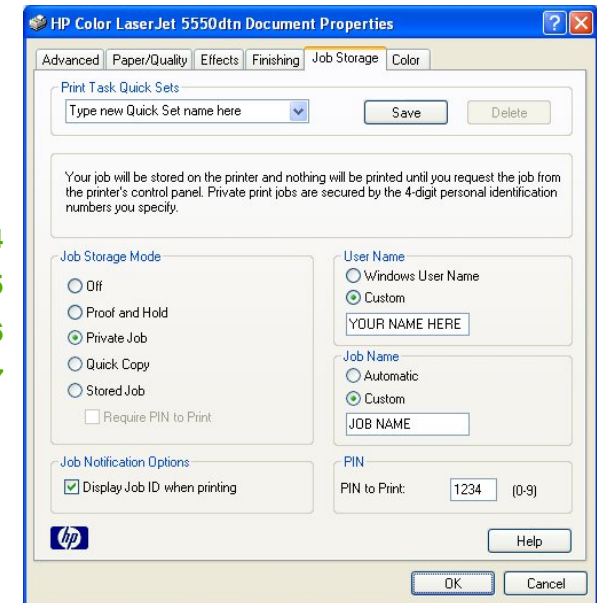


# HP Color LaserJet 5500/5550 - Print



How do I	Steps to perform
14 Print a proof and hold job (One copy prints for you to proof).	Click on <b>Job Storage</b> tab, then select <b>Proof and Hold</b> . Enter your name and a job name, then click <b>OK</b> .
15 Print a Private job (Nothing prints until physically selected at the printer using the control panel.).	Click on <b>Job Storage</b> tab, then select <b>Private Job</b> . Enter your name and a job name, and a 4-digit Personal Identification Number (PIN), then click <b>OK</b> .
16 Print a quick copy job (Jobs are printed and then stored temporarily on the hard disk.).	Click on <b>Job Storage</b> tab, then select <b>Quick Copy</b> . Enter your name and a job name, then click <b>OK</b> .
17 Print a stored job (Nothing prints until physically selected at the printer using the control panel. You can optionally set a 4-digit PIN.).	Click on <b>Job Storage</b> tab, then select <b>Stored Job</b> . Enter your name and a job name. If you want to assign a PIN, click <b>Require PIN to Print</b> then enter a 4-digit Personal Identification Number (PIN). Click <b>OK</b> .

14  
15  
16  
17



# HP Color LaserJet 5500/5550 - Print



How do I:	Steps to perform
18 Adjust color settings.	Click on the <b>Color</b> tab, and select <b>Automatic</b> (uses hp technology to best define color printing) or <b>Manual</b> (allows you to set color definitions for individual documents). To print black and white documents, click <b>Print in Grayscale</b> .
19 Change color options.	Click on the <b>Color</b> tab, click <b>Settings</b> , and make adjustments to Text, Graphics, Photographs, and Color options. Click <b>OK</b> to save the settings.
20 Change color themes.	Click on the <b>Color</b> tab, then click the <b>RGB Color</b> dropdown list or the <b>CMYK Color</b> dropdown list. Select an option to determine how colors are rendered.

18

19

20

