

HP Discovery and Design  
Fayetteville State University  
Health & Physical Education  
Rev. B  
Date: February 23, 2008

Lisa Jefferson  
Technical Consultant, Hewlett-Packard Co.

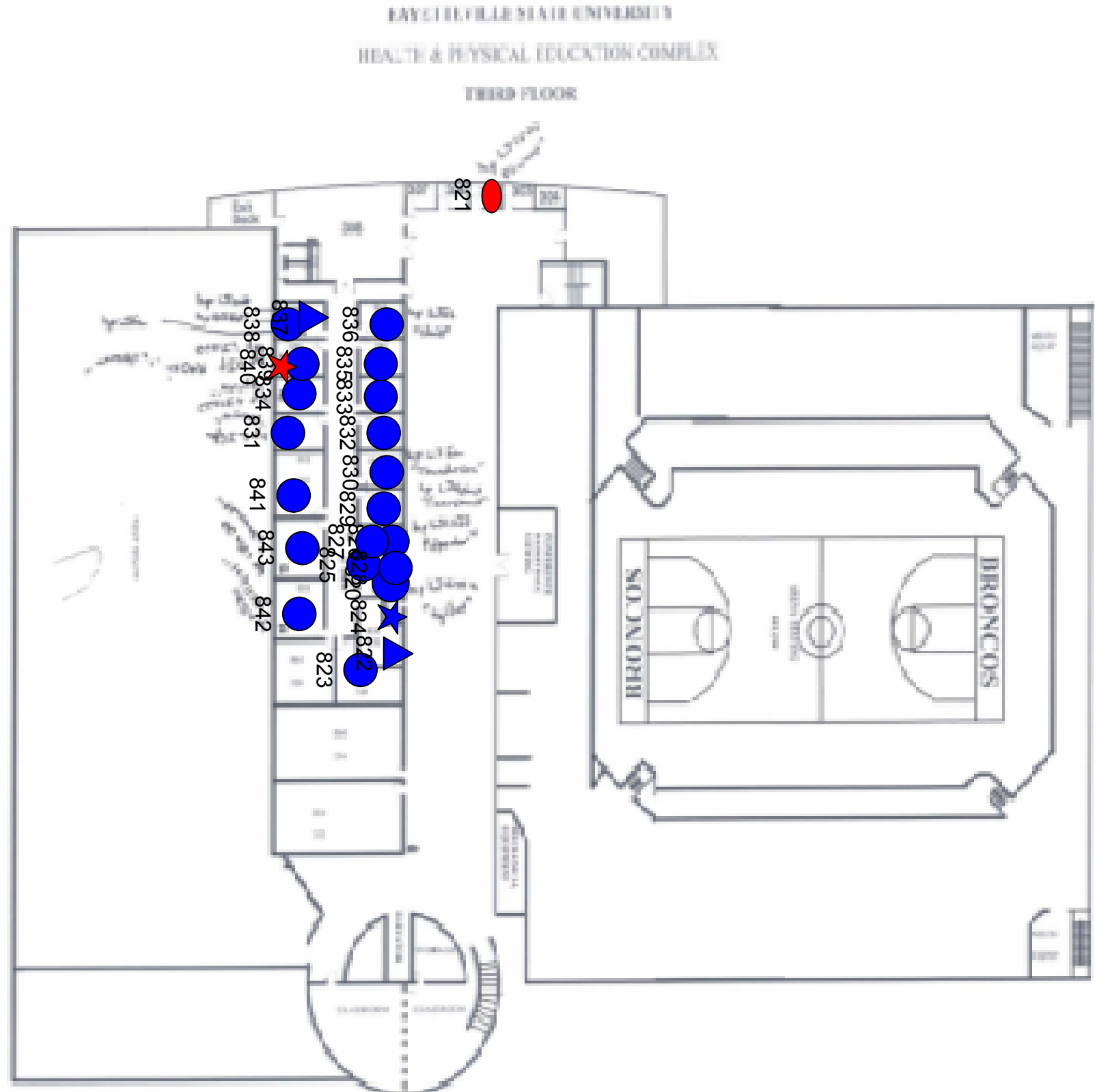


# Current State: Fayetteville State University, NC/Health & Physical Education /Floor 3






Sunday, February 24, 2008

Legend	
Device Type	
Color	Description
	B&W Device
	Color Device
Connection	
Color	Description
	Networked connected
Device Type	
Shape	Description
☆	MFP
■	Copier
●	Printer
▲	Fax
◆	Other



# Future State: Fayetteville State University, NC/Health & Phys Ed./Floor 3

Legend		
Future State Devices		
Symbol	Count	Description
	1	HP LaserJet M3035xs MFP
	1	Out of Scope
	1	HP Color LaserJet CM4730fsk MFP

