

HP Discovery and Design
Fayetteville State University
Police Main Building, Admin Building &
Substation
Rev. A
Date: February 5, 2008

Dan McIntire
Technical Consultant, Hewlett-Packard Co.

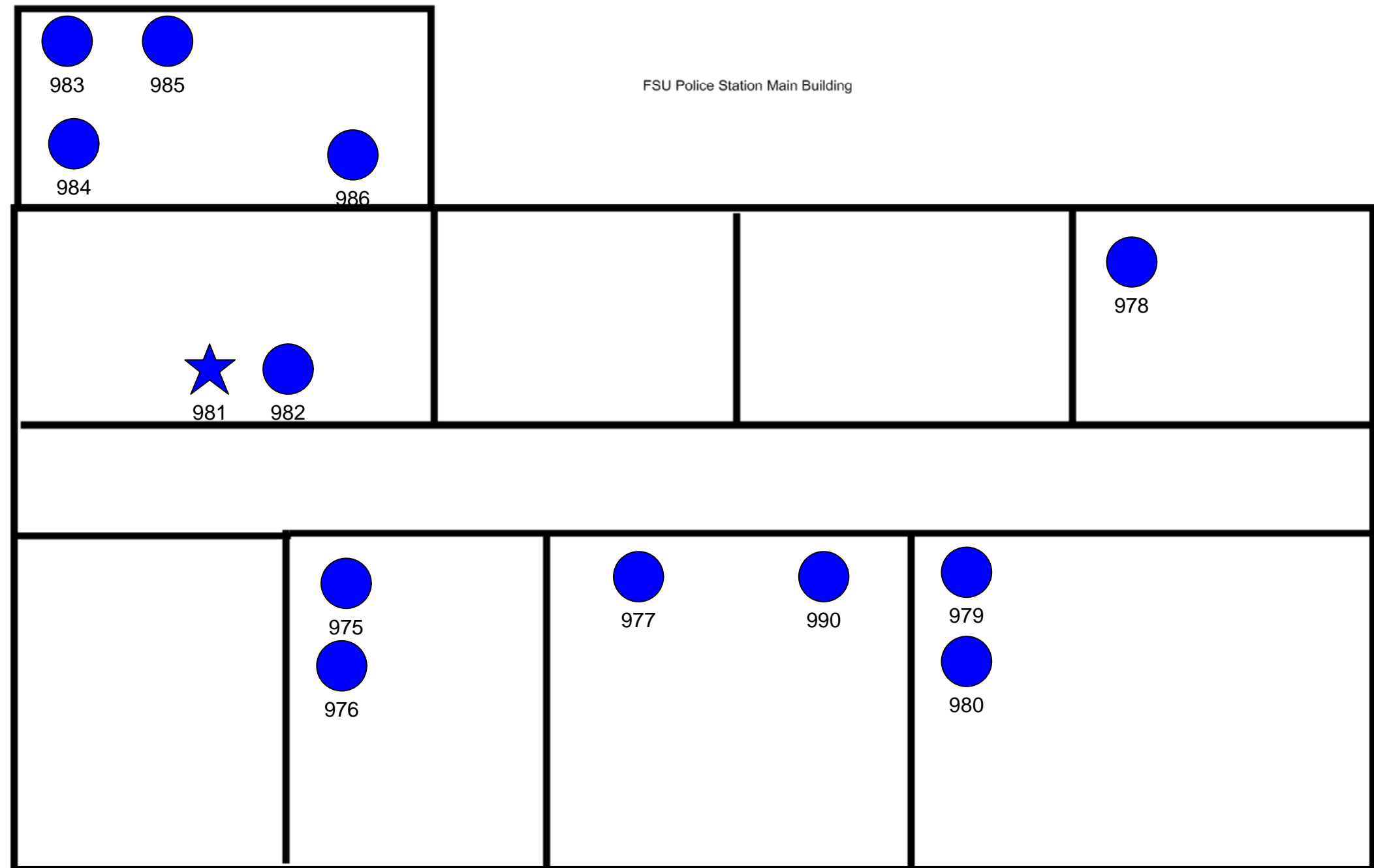
Current State: Fayetteville State University, NC/ Police/ Main Building



invent

Saturday, February 16, 2008

Legend	
Device Type	
Color	Description
	B&W Device
	Color Device
Connection	
Color	Description
	Networked connected
Device Type	
Shape	Description
☆	MFP
■	Copier
●	Printer
▲	Fax
◆	Other

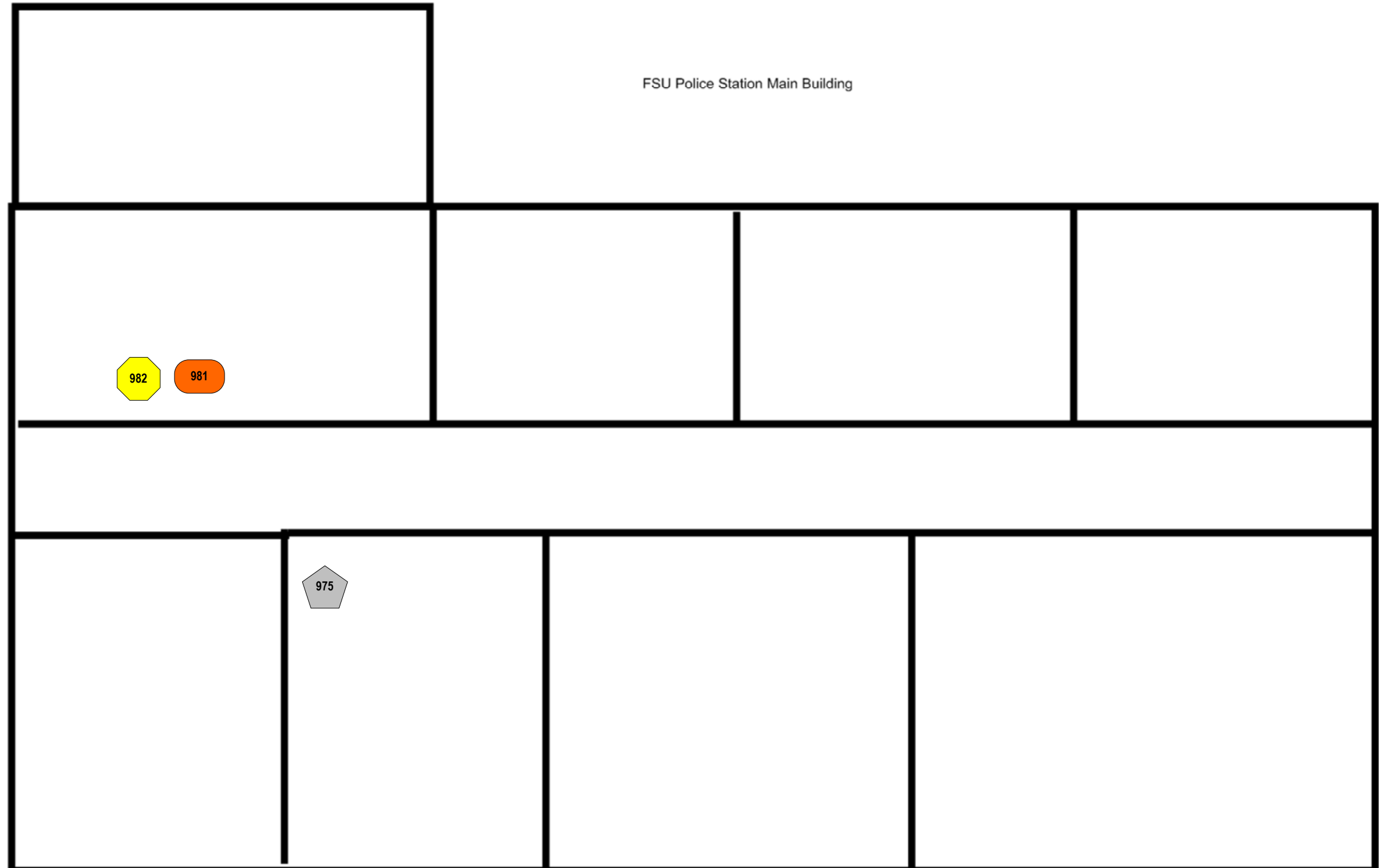


Future State: Fayetteville State University, NC/ Police/ Main Building



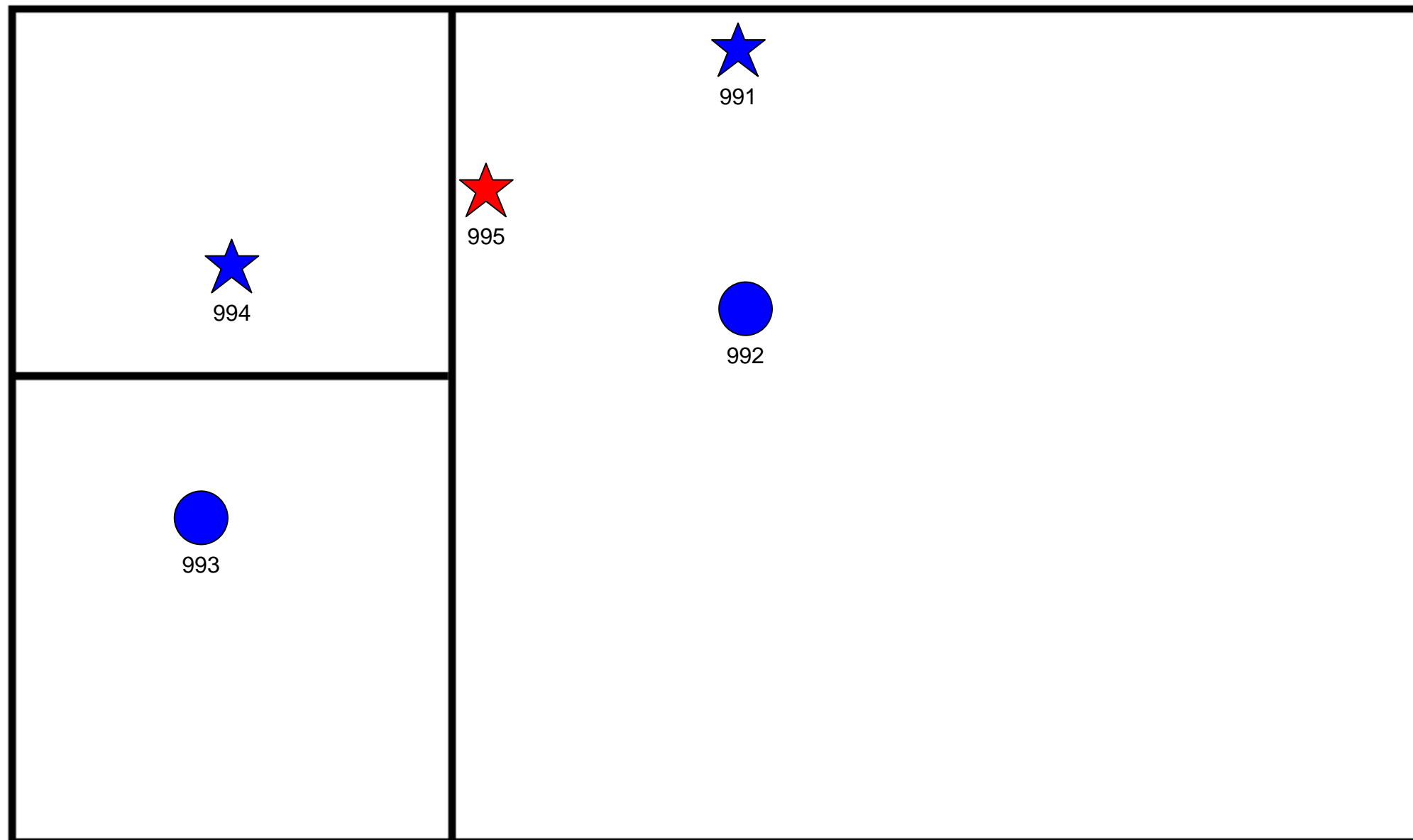
Saturday, February 16, 2008



Legend		
Future State Devices		
Symbol	Count	Description
	1	HP LaserJet M3035xs MFP
	1	HP Color LaserJet CM4730fsk MFP
	1	Out Of Scope



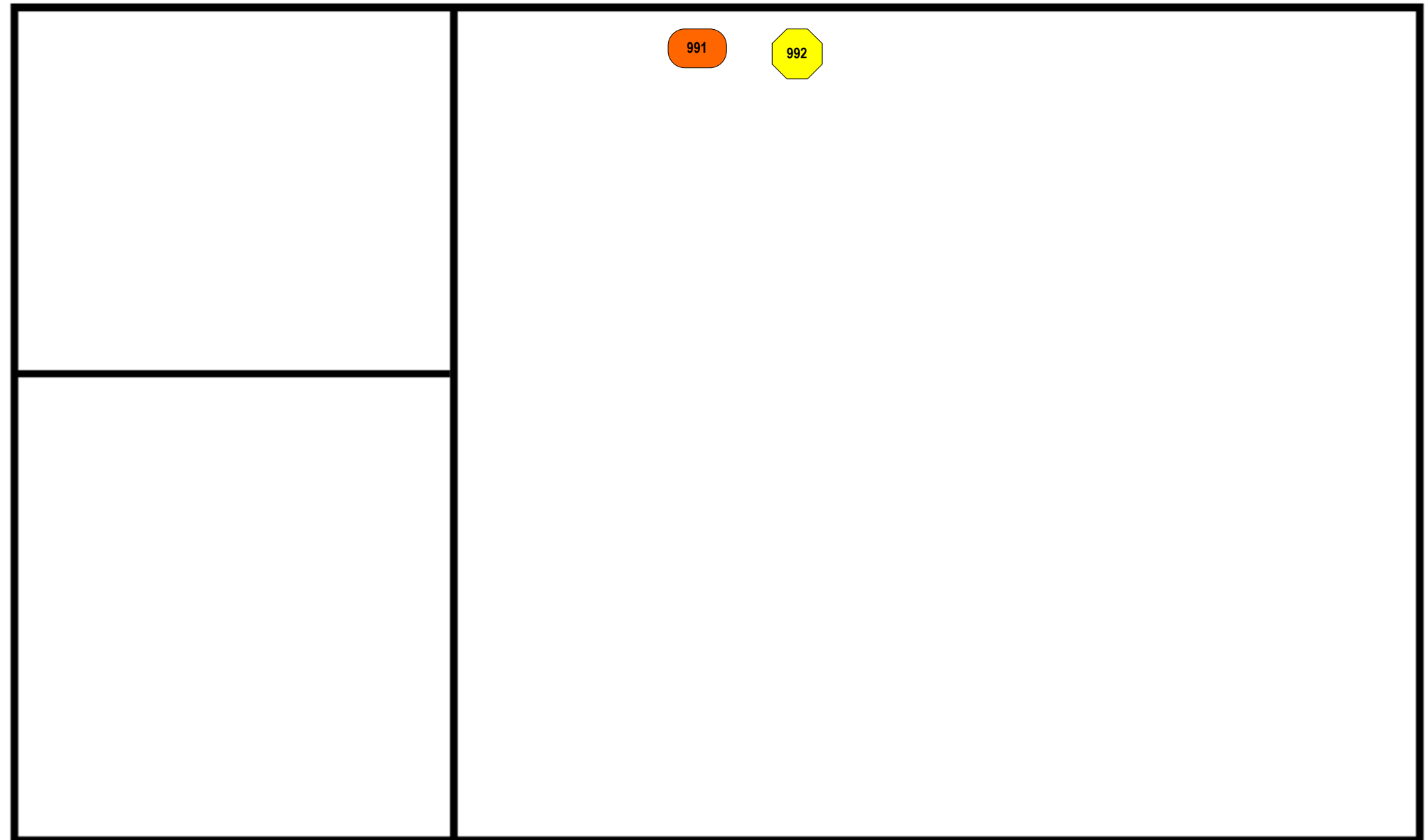
Legend	
Device Type	
Color	Description
	B&W Device
	Color Device
Connection	
Color	Description
	Networked connected
Device Type	
Shape	Description
★	MFP
■	Copier
●	Printer
▲	Fax
◆	Other

FSU Police Department Administration



Legend		
Future State Devices		
Symbol	Count	Description
	1	HP Color LaserJet CM4730fsk MFP
	1	Out Of Scope

FSU Police Department Administration



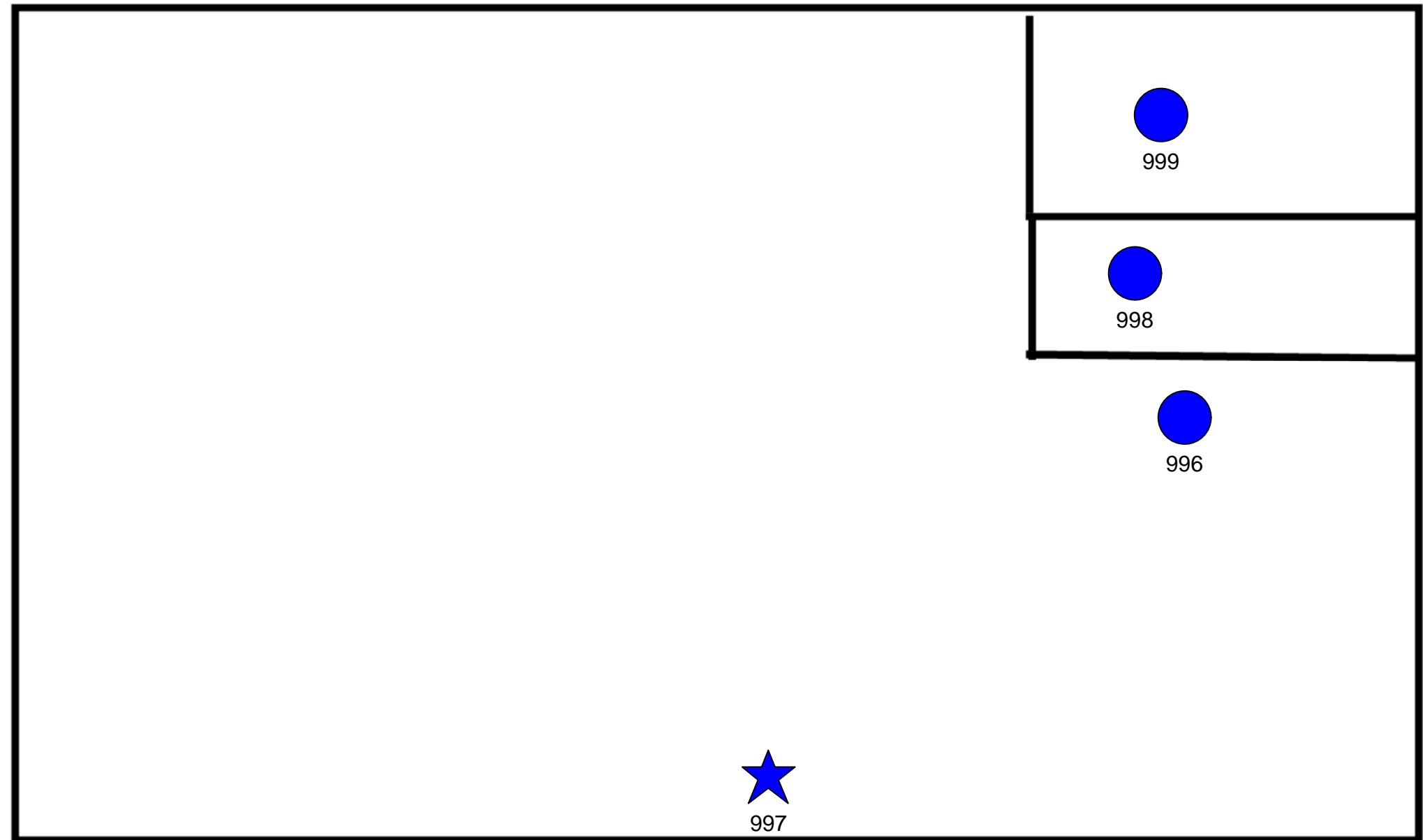
Current State: Fayetteville State University, NC/ Police/ Sub Station



Saturday, February 16, 2008

Legend	
Device Type	
Color	Description
Blue	B&W Device
Red	Color Device
Connection	
Color	Description
Green	Networked connected
Device Type	
Shape	Description
Star	MFP
Square	Copier
Circle	Printer
Triangle	Fax
Diamond	Other

FSU Police Sub Station





Future State: Fayetteville State University, NC/ Police/ Sub Station



invent

Saturday, February 16, 2008

Legend		
Future State Devices		
Symbol	Count	Description
	1	HP LaserJet M4345xs MFP
	1	Out Of Scope

FSU Police Sub Station

