

**HP Discovery and Design
Fayetteville State University
SBE 1st and 2nd Floors
Rev. B
Date: 2/22/2008**

**Jesse Fercho
Technical Consultant, Hewlett-Packard Co.**



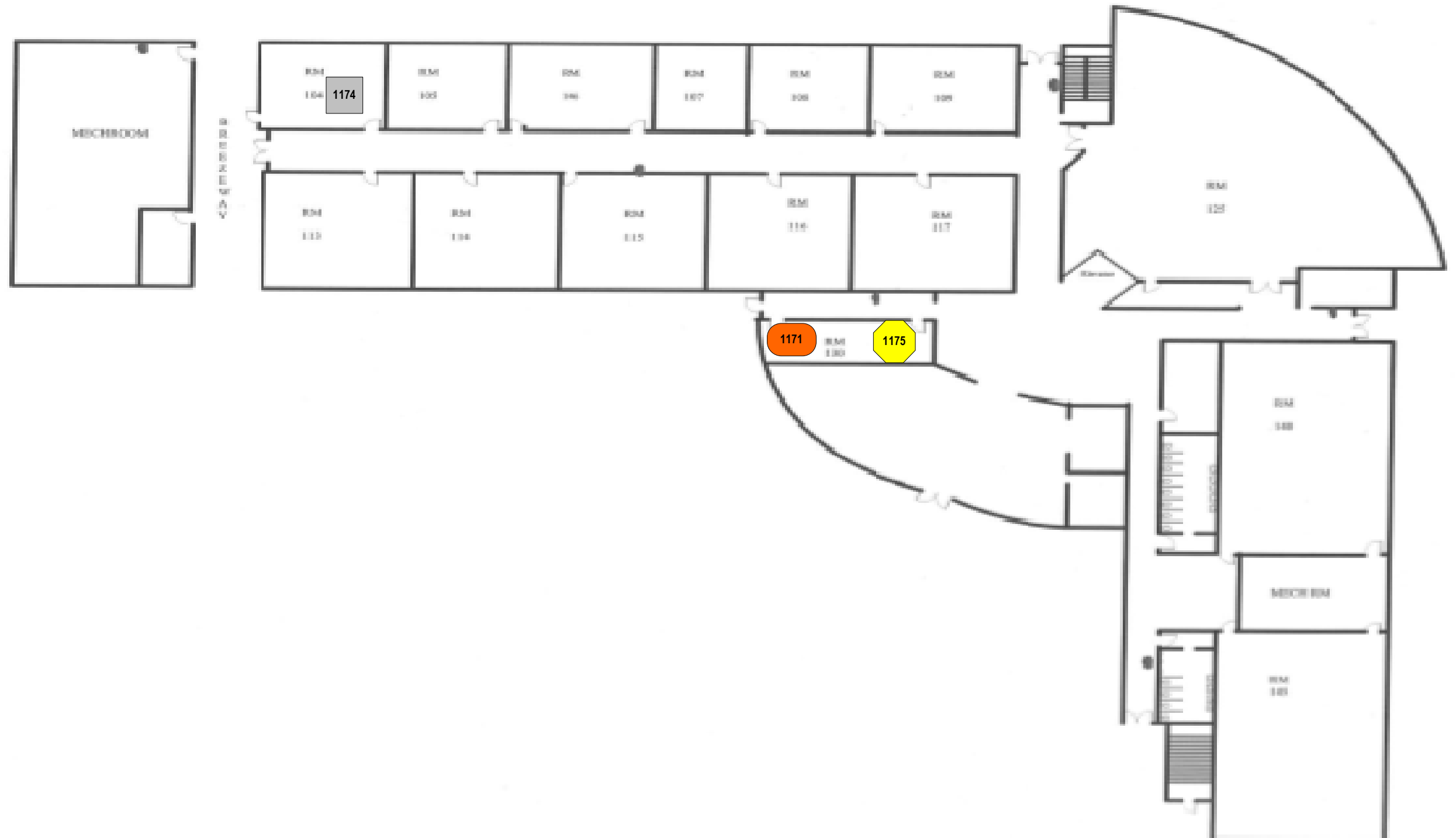
Future State: Fayetteville State University, NC/SBE/1st Floor



Friday, February 22, 2008

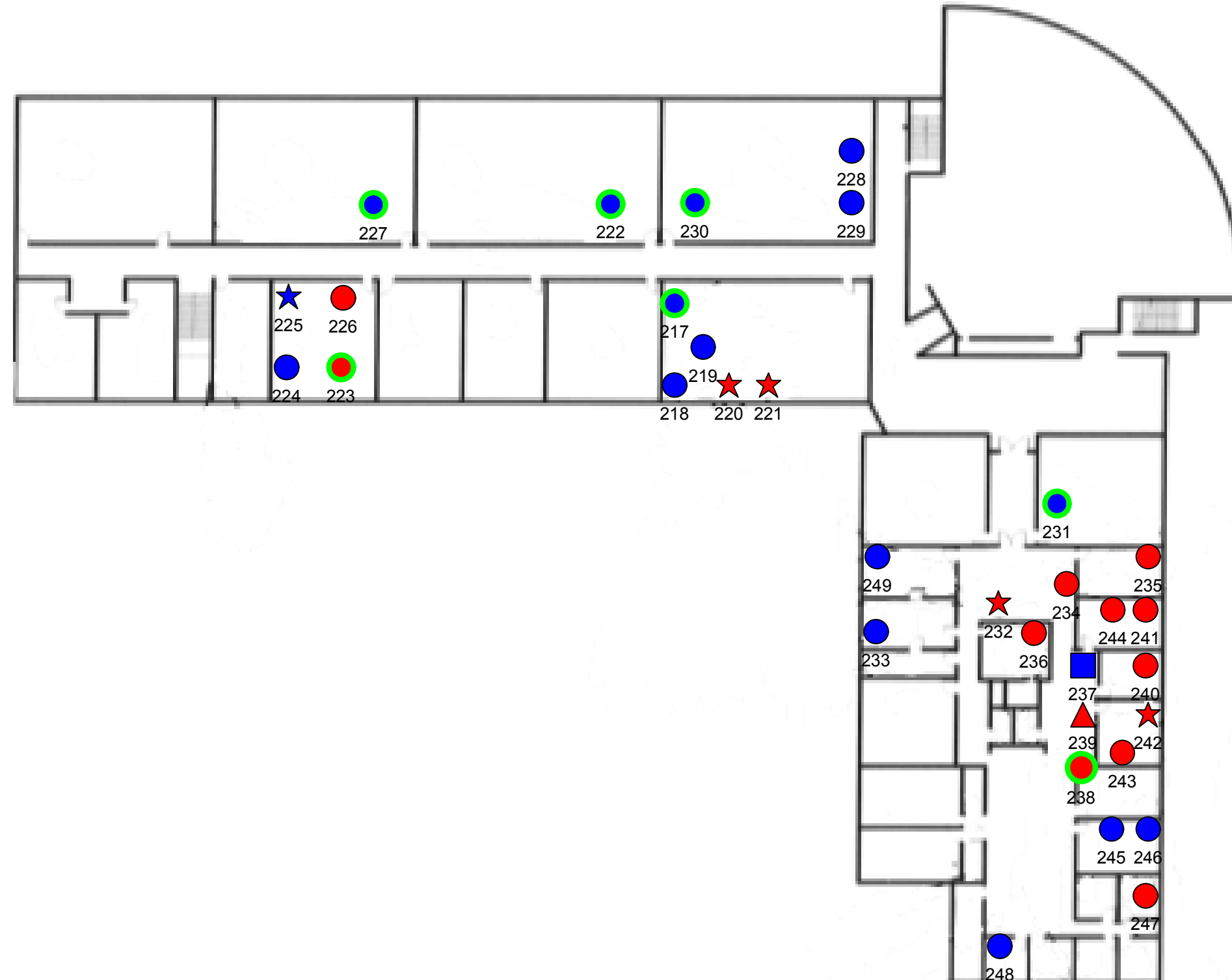
Legend		
Future State Devices		
Symbol	Count	Description
	1	HP LaserJet 4350N
	1	HP Color LaserJet CM4730 fsk MFP
	1	Out Of Scope






FAYETTEVILLE STATE UNIVERSITY SCHOOL OF BUSINESS AND ECONOMICS FIRST FLOOR



FAYETTEVILLE STATE UNIVERSITY SCHOOL OF BUSINESS AND ECONOMICS SECOND FLOOR

Legend	
Device Type	
Color	Description
Blue	B&W Device
Red	Color Device
Connection	
Color	Description
Green	Networked connected
Device Type	
Shape	Description
Star	MFP
Square	Copier
Circle	Printer
Triangle	Fax
Diamond	Other



Legend		
Future State Devices		
Symbol	Count	Description
	4	HP LaserJet 4350N
	1	HP LaserJet M4345xs MFP
	1	HP LaserJet M5035xs MFP
	2	HP Color LaserJet CM4730 fsk MFP
	1	Out Of Scope

FAYETTEVILLE STATE UNIVERSITY SCHOOL OF BUSINESS AND ECONOMICS SECOND FLOOR

