

HP Discovery and Design
Fayetteville State University
Spaulding Infirmary
Rev. B
Date: February 23, 2008

Lisa Jefferson
Technical Consultant, Hewlett-Packard Co.

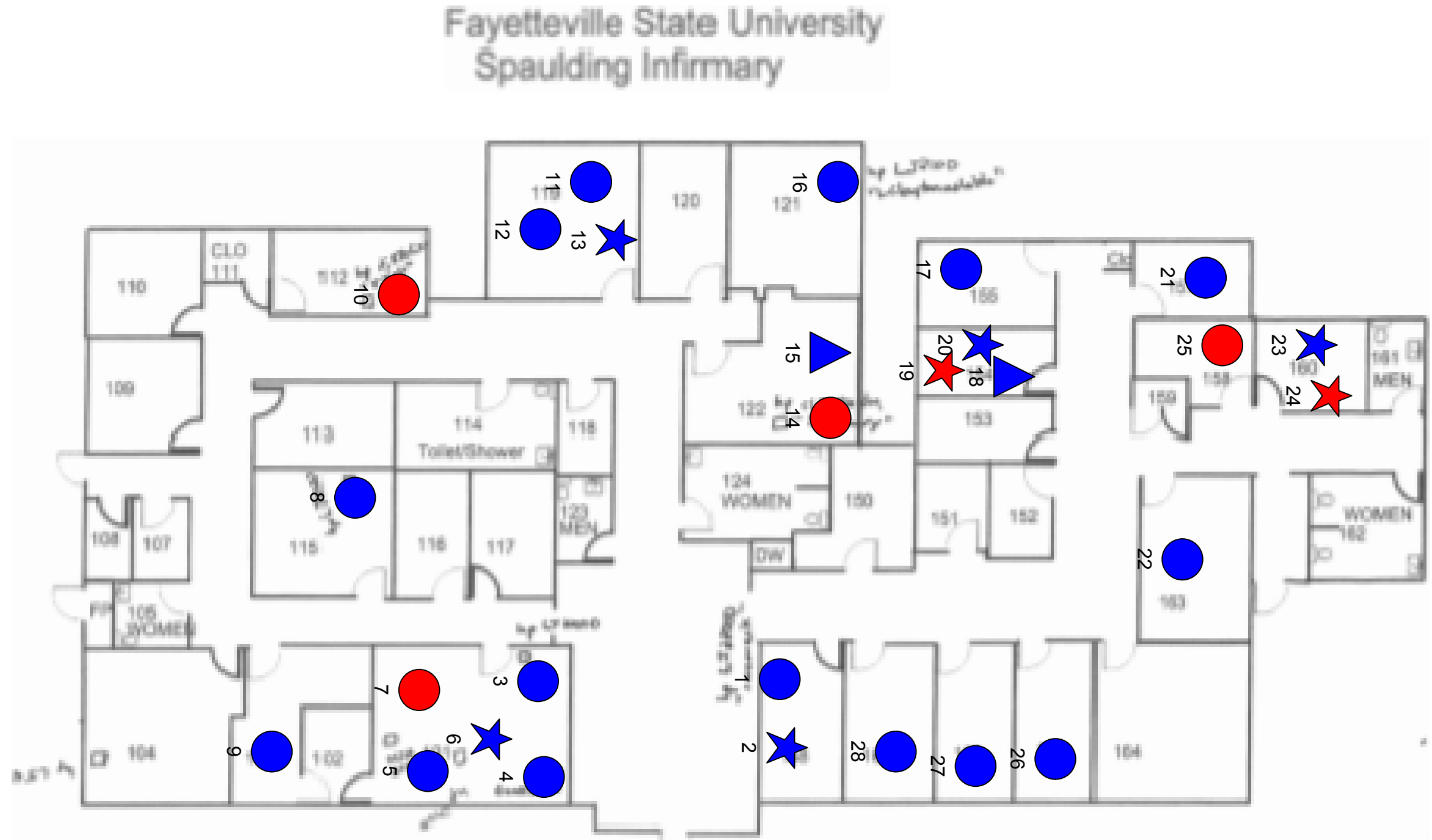


Current State: Fayetteville State University, NC/Spaulding Infirmary /Floor 1



Saturday, February 23, 2008

Legend	
Device Type	
Color	Description
Blue	B&W Device
Red	Color Device
Connection	
Color	Description
Green	Networked connected
Device Type	
Shape	Description
Star	MFP
Square	Copier
Circle	Printer
Triangle	Fax
Diamond	Other



Future State: Fayetteville State University, NC/Spaulding Infirmary/Floor 1



Saturday, February 23, 2008

Legend		
Future State Devices		
Symbol	Count	Description
	3	HP LaserJet M3035xs MFP
	5	Out of Scope
	2	HP LaserJet 4350n
	2	HP Color LaserJet CM4730fsk MFP
	1	HP LaserJet M5035xs MFP

Fayetteville State University Spaulding Infirmary

