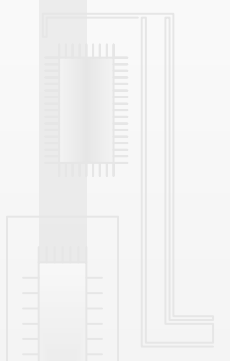
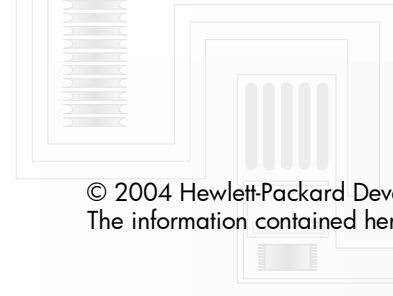
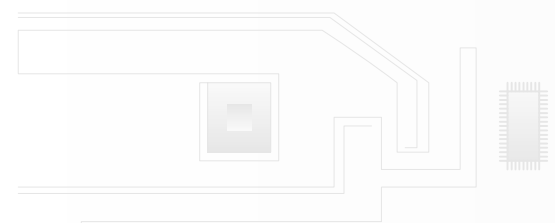
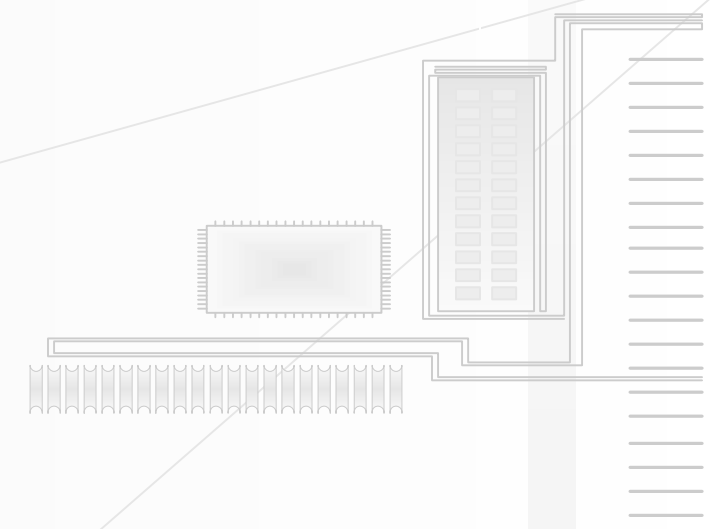


HP Discovery and Design  
Fayetteville State University  
Taylor Science  
Rev. A  
February 8, 2008

Dan McIntire  
Technical Consultant, Hewlett-Packard Co.





# Future State: Fayetteville State University, NC/ Taylor Science / Floor 1



Saturday, February 16, 2008

Legend		
Future State Devices		
Symbol	Count	Description
	1	HP LaserJet M3035xs MFP
	1	HP Color LaserJet CM4730fsk MFP

Taylor  
Floor 1

Room 105 Men's RR	Room 104	Room 103 Classroom		Room 102 Classroom	Room 101 Classroom
----------------------	----------	-----------------------	--	-----------------------	-----------------------

Room 107	Room 108	Room 109 ROTC

Room 110 A	Room 110 B	Room 110 suite	Room 111	Room 112

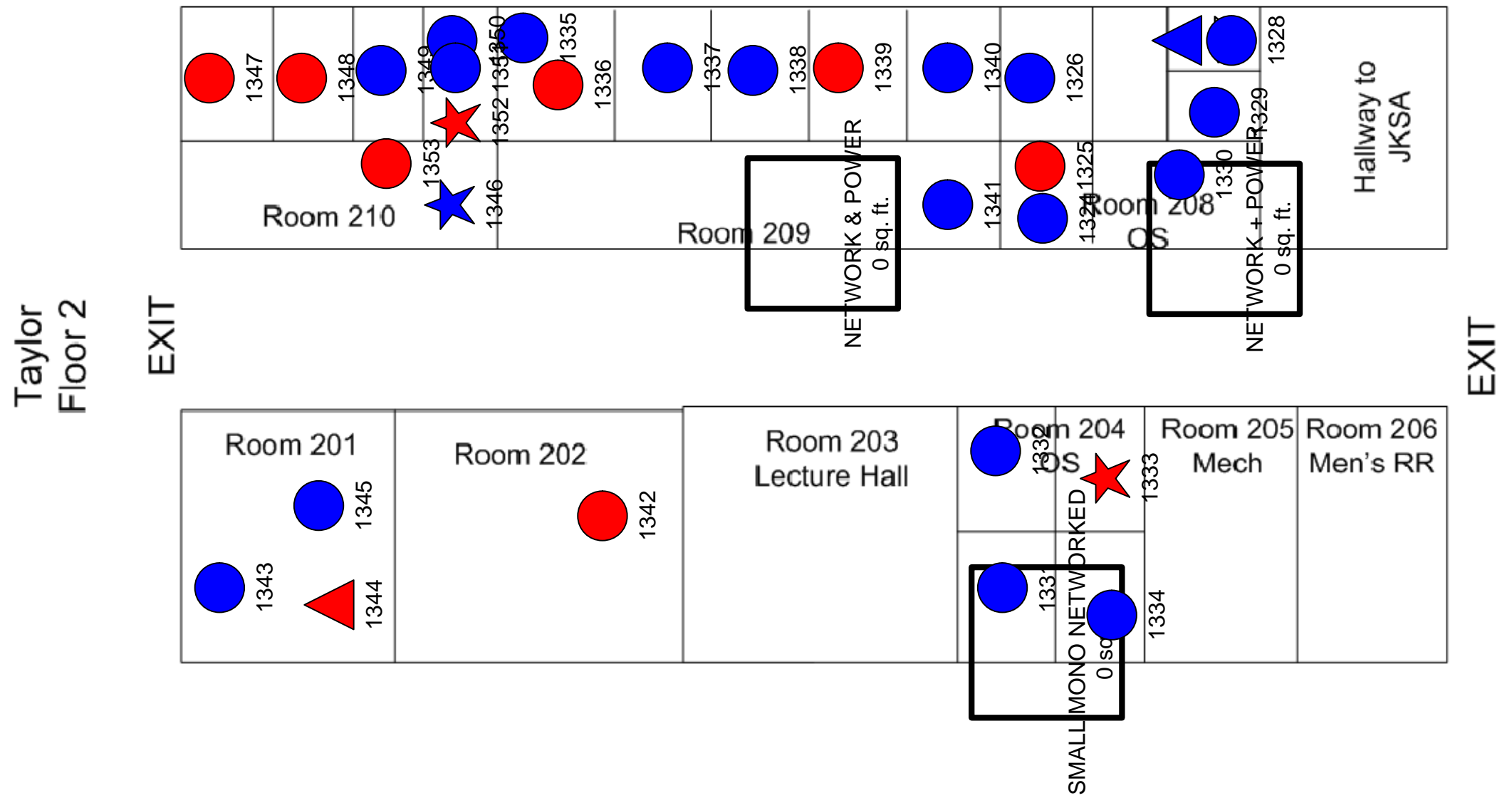
Entrance

# Current State: Fayetteville State University, NC/ Taylor Science / Floor 2



Saturday, February 16, 2008

Legend	
Device Type	
Color	Description
Blue	B&W Device
Red	Color Device
Connection	
Color	Description
Green	Networked connected
Device Type	
Shape	Description
Star	MFP
Square	Copier
Circle	Printer
Triangle	Fax
Diamond	Other



# Future State: Fayetteville State University, NC/ Taylor Science / Floor 2



Saturday, February 16, 2008

Legend		
Future State Devices		
Symbol	Count	Description
	1	HP LaserJet M5035xs MFP
	2	HP LaserJet M3035xs MFP
	2	HP Color LaserJet CM4730fsk MFP
	1	Out Of Scope

