

3+2



FAYETTEVILLE
STATE UNIVERSITY™

“3 + 2” Dual Degree Program: Earn FIRST Bachelor of Science Degree at Fayetteville State University and SECOND Bachelor of Science Degree in Engineering at North Carolina State University in 5 Years

Students who enroll in the “3+2” Dual Degree Program attend FSU for approximately 3 years, majoring in

- Chemistry
- Computer Science or
- Mathematics

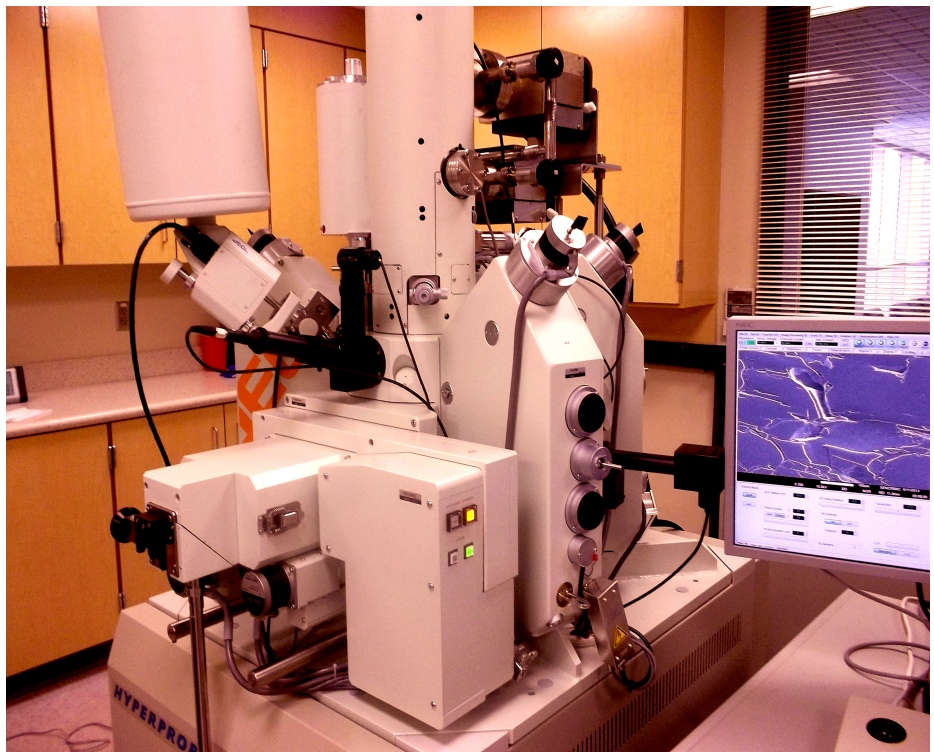
Then, upon successful completion of all requirements, FSU students attend NCSU’s College of Engineering to complete a second major in

- Chemical Engineering
- Computer Engineering
- Electrical Engineering or
- Civil Engineering

After successful completion of the admission, transfer and academic requirements of both institutions, students will be awarded two degrees.

At FSU

Chemistry prepares students for careers as professional chemists, dentists, medical doctors, pharmacists, optometrists, and science educators, and for graduate or professional studies. This degree also can lead to earning a degree in chemical engineering.



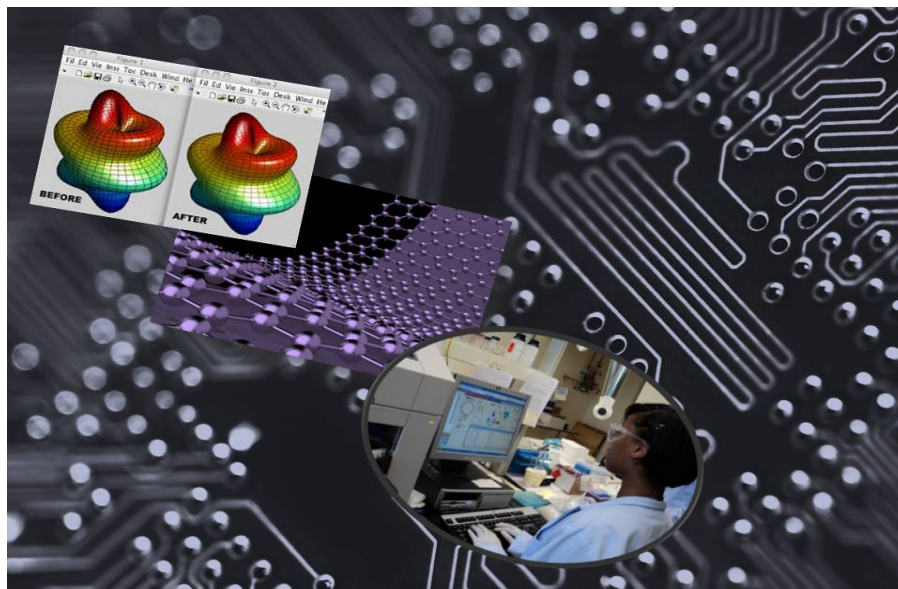
Computer Science at FSU is accredited by CAC/ABET (the Computing Accreditation Commission of ABET, Inc). This degree prepares students for careers as computer and information scientists, programmers, software engineers, systems analysts, database administrators, network and systems administrators, data communications analysts, and for graduate or professional studies. This degree also can lead to earning a degree in computer or electrical engineering.

Mathematics prepares students for careers as actuaries, operations research analysts, statisticians, economists, financial analysts, market and survey researchers, personal financial advisors, physicists and astronomers, and mathematics educators. This degree also can lead to earning a degree in civil engineering.

3+2 DUAL DEGREE PROGRAM

Admission Requirements

- Applicants for the “3+2” Dual Degree Program must apply for admission to FSU and meet all requirements for unconditional admission.
- Initially, applicants are admitted to FSU with the intent to pursue the dual degree program and will be advised by the FSU Engineering Program Coordinator about the curriculum plans agreed upon by FSU and NCSU.
- Admitted students may be required to enroll in FSU Summer School immediately preceding the first year of study or in subsequent years to remain on track to transfer to NCSU.
- At the end of the first year of study, FSU students should apply for official admission into the FSU/NCSU Dual Degree Engineering Program. Acceptance in the program is based on the student’s Grade Point Average (GPA) in science and mathematics courses, which must be at least a 3.0.
- Upon acceptance by NCSU, students will receive an acceptance letter from the College of Engineering, further specifying the requirements for transition from FSU to NCSU.
- Admitted students in the dual degree program will be required to enroll in courses based on the curriculum guide approved by FSU and NCSU. Any variation from the required courses must be pre-approved by the program coordinator and the appropriate department chairs.



Financial Aid

The Office of Financial Aid at FSU provides information to students who seek financial assistance. For more information, contact: finaid@uncfsu.edu or (910) 672-1325.

Contact Info

For more information about the 3+2 Program, either of the engineering majors, or admissions, contact one of the following:

FSU “3+2” Dual Degree Engineering Program

Dr. Shubo Han, Program Coordinator
Lyon Science Annex 334
shan@uncfsu.edu • (910) 672-1303

FSU Department of Chemistry and Physics

Dr. Cevdet Akbay, Chair
STB 305
cakbay@uncfsu.edu • (910) 672-1943

FSU Department of Mathematics and Computer Science

Dr. Radoslav Nickolov, Chair
STB 205
mikolov@uncfsu.edu • (910) 672-2265

Academic Advisor

Mrs. Andrea Bennett
STB 112
abenne18@uncfsu.edu • (910) 672-2913

Office Administrator

Ms. Brenda Fuller
STB 305
bfuller@uncfsu.edu • (910) 672-2441

FSU Office of Admissions

Collins 106
(910) 672-1371 • Toll Free: (800) 222-2594
admissions@uncfsu.edu