



## Need a Bike? Rent a Bike. Anytime!

### HOW IT WORKS

1. Download **LimeBike app** and create an account.
2. When you are ready to ride, go into the app and locate a bike.
3. Scan QR code to unlock a bike and ride.
4. Park at any bike rack or designated location and lock bike to end ride.

**Have Fun and Enjoy the Ride!**

### PRICES

Faculty, Staff, and Students

**Sign up with .edu email for discounts**

Only **50 cents** for each **30 minutes** ride

Or **\$14.95** for **100 rides** per **month**

Community

**\$1** for each **30 minutes** ride

Or **\$29.95** for **100 rides** per **month**

### SAFETY SUGGESTIONS

- Wear a helmet. It could save your life.
- Wear bright reflective clothing, especially at night.
- Obey rules of the road. Stop at stop signs and red lights.
- Ride with the flow of traffic, in the same direction as cars.
- Be alert. Avoid cell phones and headphones while riding.
- Watch and listen for cars, particularly near intersections and driveways.
- Watch for and yield to pedestrians, especially on sidewalks and at intersections
- Remember to lock the bike to end your ride and check the app for your trip summary.
- Park near a bike rack or designated location. Do not block sidewalks, streets, or car parking spaces.

## FAQ

### Can I reserve a bike?

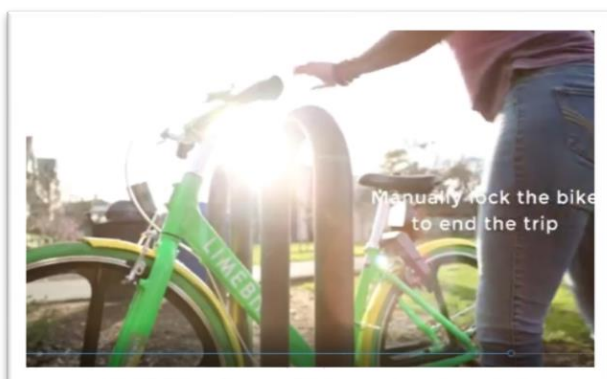
Bikes **cannot be reserved**. They operate on a first-come, first-serve basis. If you see a nearby bike on the map, it's yours to ride!

### How do I pay for my ride?

Simply enter your credit or debit card information into the app and purchase credits you can use for future rides.

### How do I end my ride?

First, please make sure you're parking in a safe, **designated location**. Dock free bikes work if we all take responsibility and park in places that **don't block car traffic, impede pedestrian access or encroach on private property**. To **lock** your LimeBike, simply **push down** on the **locking arm** connected to the rear wheel to lock the bike. After completing your ride, the app will provide you with a trip summary.



### **LimeBike Customer Service**

Email: [support@limebike.com](mailto:support@limebike.com)

Call: 1-888-LIME-345

Text: 1-888-546-3345

### **Sustainability & Energy Management Office**

FSU Facilities Management

Office: 1-910-672-1954

POC: DJ Diop